

# RAAS

VOL -5

शुभकला bhkala



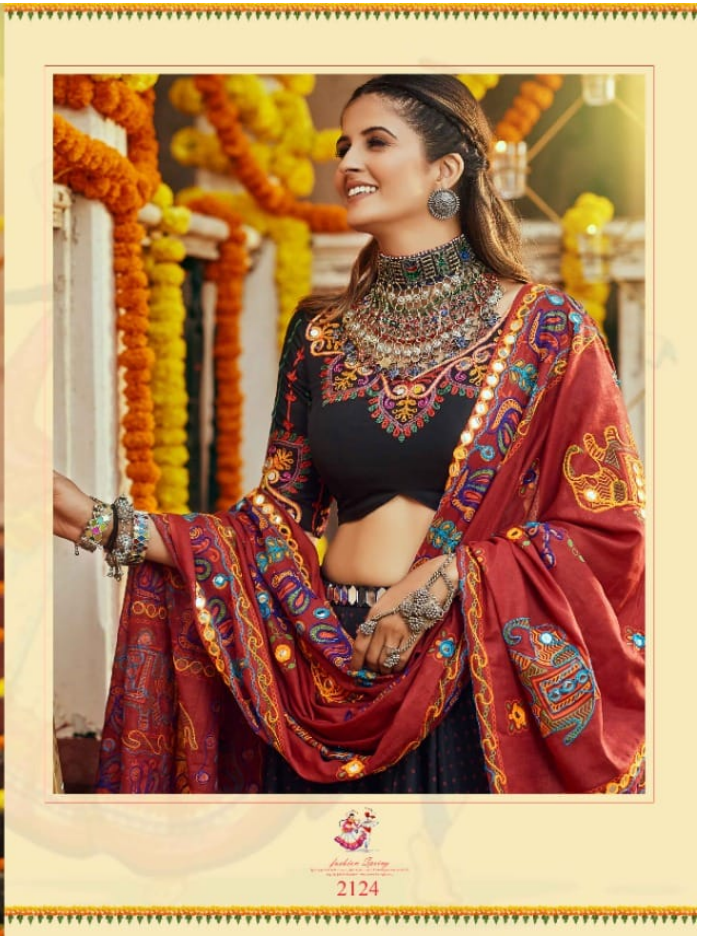
# RAAS

VOL -5

शुभकला bhkala









ॐ bhkala

2121



શ્રીbhkala

શ્રીભકલા  
2122







# RAAS

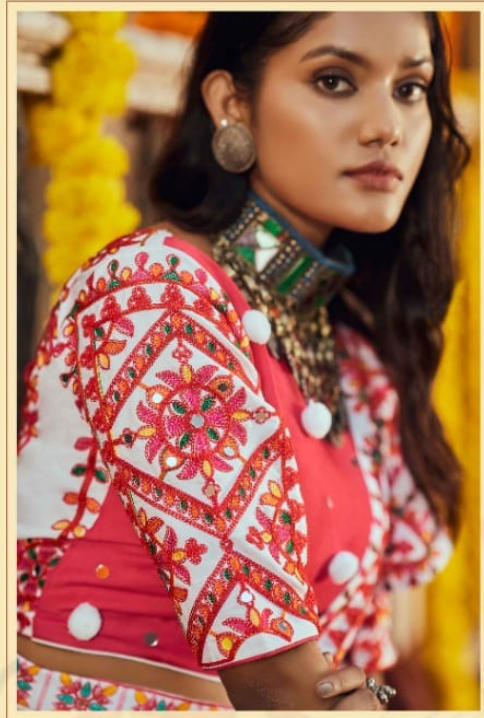
VOL -5

श्रीbhkala®





Swastika bhkala



  
The joy of wearing  
2127



Subhkala



Always Be Different  
2125

❧bhkala



2121



2122



2123



2124



2125



2126



2127



2128



2129



❧bhkala





Design No. (SKU)	2121	2122	2123	2124	2125	2126	2127	2128	2129
<b>Lehenga Color</b>	Pink	White	Dusty Pink	Black	White & Navy	Sky	Black	Yellow	Multi Color
<b>Choli Color</b>	Fluorescent Green	Fluorescent Green	Dusty Pink	Black	Navy	Sky	Deep Pink	Green	Maroon
<b>Dupatta Color</b>	Navy	Deep Pink	Navy	Maroon	Navy	NA	White	Deep Pink	Maroon
<b>Koti</b>						Available (Printed Work)			
<b>(Full Stitched) (42-SIZE)</b>	NA	NA	NA	NA	NA	NA	NA	NA	NA
<b>Waist Belt (Hand Mirror Work)</b>	NA	NA	NA	Available	NA	NA	NA	NA	Available
<b>Lehenga Flair</b>	8.5 MTR	8.5 MTR	8.5 MTR	8.5 MTR	8.5 MTR	8.5 MTR	8.5 MTR	8.5 MTR	8.5 MTR
<b>Lehenga Fabric</b>	Maslin Cotton	Maslin Cotton	Silk	Maslin Cotton	Maslin Cotton	Maslin Cotton	Maslin Cotton	Maslin Cotton	Maslin Cotton
<b>Choli Fabric</b>	Silk	Maslin Cotton	Silk	Maslin Cotton	Maslin Cotton	Cotton	Maslin Cotton	Maslin Cotton	Gajji Silk
<b>Dupatta Fabric</b>	Cotton	Cotton	Maslin Cotton	Cotton	Maslin Cotton	NA	Maslin Cotton	Cotton	Silk
<b>Size (Semi Stitched)</b>	UPTO 42 BUST AND WAIST	UPTO 42 BUST AND WAIST	UPTO 42 BUST AND WAIST	UPTO 42 BUST AND WAIST	UPTO 42 BUST AND WAIST	UPTO 42 BUST AND WAIST	UPTO 42 BUST AND WAIST	UPTO 42 BUST AND WAIST	UPTO 42 BUST AND WAIST
<b>Lehenga Work</b>	Digital Printed with Mirror Pasting Work	Digital Printed Work	Digital Printed Work	Digital Printed Work	Digital Printed with Thread Embroidered with all-Over Mirror Work	Digital Printed with all Over Tessals Pasting Work	Digital Printed with Mirror Pasting Work	Digital Printed with Mirror Pasting Work	Digital Printed Work
<b>Choli Work</b>	Thread Embroidered Work	Thread Embroidered with Mirror Hand Work	Digital Printed Work	Thread Embroidered work with All-Over Mirror Pasting Work	Thread Embroidered work with Embellished Mirror Work	Shibburi Print	Thread Embroidered work with Mirror Work	Embellished Mirror Work	Thread Embroidered with Mirror Work
<b>Dupatta Work</b>	Aari Work with Printed Dupatta	Aari Work with Printed Dupatta	Embellished Mirror Work Stall Style Dupatta	Aari work with Printed Dupatta	Embellished Mirror Work	NA	Thread Embroidered with all over Mirror Pasting Work Stall Style Dupatta	Aari Work with Printed Dupatta	NA
<b>Lehenga Length (Full Stitched)</b>	42 INCH Length 42 INCH Waist	42 INCH Length 42 INCH Waist	42 INCH Length 42 INCH Waist	42 INCH Length 42 INCH Waist	42 INCH Length 42 INCH Waist	42 INCH Length 42 INCH Waist	42 INCH Length 42 INCH Waist	42 INCH Length 42 INCH Waist	42 INCH Length 42 INCH Waist
<b>Choli Length</b>	0.65 MTR	1 MTR	1 MTR	1 MTR	1 MTR	1 MTR	1 MTR	1.20 MTR	1 MTR
<b>Dupatta Length</b>	2.30 MTR	2.30 MTR	2.30 MTR	2.30 MTR	2.30 MTR	NA	2.30 MTR	2.30 MTR	2.30 MTR
<b>Weight</b>	1.5 KG	1.5 KG	1.5 KG	1.5 KG	1.5 KG	1.5 KG	1.5 KG	1.5 KG	1.5 KG

THIS BOOK / CATALOGUE / LOGO / ARE PROTECTED UNDER COPYRIGHT ACT. AN ILLEGAL/UNAUTHORIZED REPRINT, PUBLISHING, REPRODUCTION, DISTRIBUTION AND MODIFICATION OF ANY IMAGES, PHOTOGRAPHS AND PRODUCTS, TOTALLY OR IN PART, FOR ANY PURPOSE, REASON OR CAUSE IS STRICTLY PROHIBITED AND PUNISHABLE UNDER LAW.





શ્રીbhkala



*The art of dressing*  
2127





शुभकला



2126















शुभकला



Let's Dress Together  
2121



शुभकला



2128





शुभकला



  
The woman's style  
2129







शुभकला



शुभकला  
2128



शुभकला



2123





bhkala



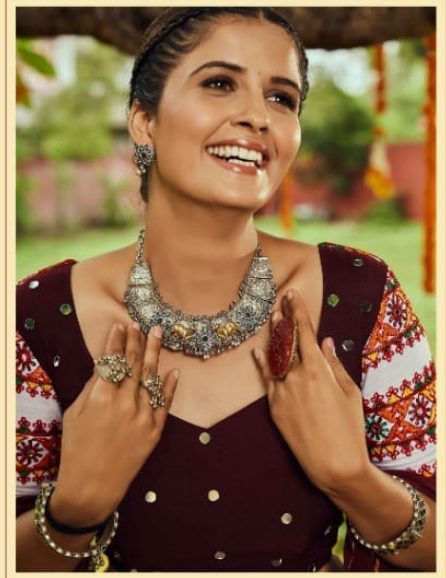
2123

2

The right side of the image is a promotional card for the outfit. It features a close-up photograph of the woman's face and upper body, showing her jewelry: a large silver necklace with circular pendants, a matching bracelet, and a ring. The background of the card is a light yellow color with a decorative border at the top and bottom. The brand name 'bhkala' is printed in the top right corner. A small icon of a deity is located in the bottom left corner, and the number '2123' is printed in the bottom center. A large, faint number '2' is visible in the bottom right corner.



शुभकला



2129



  
Always be different  
2125

