

GULBAHAAR

Vol -3


ALIZEH
BOLD & BEAUTIFUL



GULBAHAAR

Vol -3


ALIZEH
BOLD & BEAUTIFUL





GUL BAHAAR VOL - 3

RATE LIST

D. NO	COLOR	RATE
3014	LIGHT LAVENDER	3995
3015	DUSTY YELLOW	3995
3016	FIROZI	3995
3017	DUSTY PINK	3995
TOTAL		15980

*12% GST EXTRA

FABRIC DESCRIPTION:

TOP & DUPATTA - ALIZEH GEORGETTE

INNER & BOTTOM- DULL SANTOON

WORK DESCRIPTION:

TOP, DUPATTA & SLEEVES BEAUTIFULLY CRAFTED WITH MULTI THREAD & ZARI
EMBROIDERY

SIZE DETAILS:

TOP- SEMI STITCHED UP TO SIZE 44" BUST

TOP LENGTH- 58"

INNER & BOTTOM FABRIC- 5 MTRS

DUPATTA- 2.25 MTRS

ALIZEH®
BOLD & BEAUTIFUL



ALIZEH®
BOLD & BEAUTIFUL

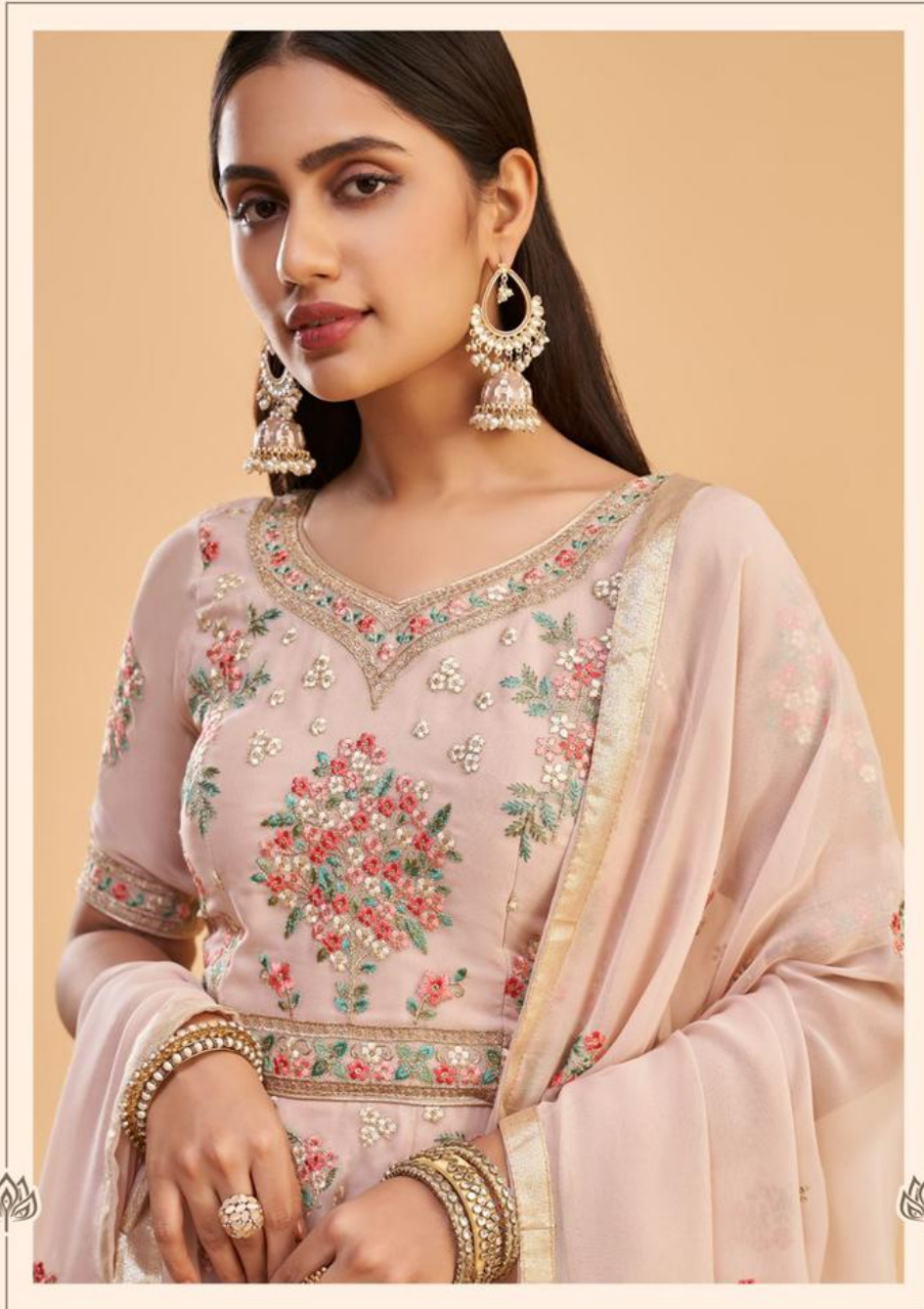


Gorgeous

DESIGNER IN TRENDS,
DESIGN AND POP
CULTURE AND TRADITION
FOR MORE CULTURAL
PREFERENCES, AND IN
COLORS AND FABRICS
THAT'S ALWAYS IN STYLE
BELOW.

3017





Gorgeous

TRENDS IN REALITY OF THE WORLD AND POP CULTURE ARE TAKING ON
NEWER GLOBAL PATTERNS, AND BY CARRYING ONE FROM THERE'S
SEARCHED IN STYLE IN COLOR.

3017







3014



3015



3016



3017

ALIZEH®
BOLD & BEAUTIFUL





Pretty

DESIGNED IN PUNJAB, INDIA
AND THE CULTURE AND TRADITION
OF NORTH INDIA INSPIRED
THE DESIGN AND STYLING
OF THE GARMENT IN PUNJAB.

3016



ALIZEH®
BOLD & BEAUTIFUL





Charming

TRADITION, DESIGN AND CULTURE ARE
TAKING ON MORE GLOBAL DIMENSIONS AND OF COURSE,
THE THING THAT'S COMMON TO ALL IS COLOR.

3015



ALIZEH®
BOLD & BEAUTIFUL





Charming

TRENDS IN FASHION, DESIGN AND THE CULTURE ARE
SHAPING ON MORE GLOBAL INFLUENCE, AND OF COURSE,
THE THING THAT'S REMAIN IN STYLE IS CLASSIC.

3015





Elegance

TRENDS IN FASHION, BEAUTY AND POP CULTURE ARE
TAKING ON A MORE LIBERAL INFERENCE, AND OF COURSE,
ONE THING THAT'S REMAINING IS STYLE IS CLASSIC.

3014



ALIZEH®
- BOLD & BEAUTIFUL



ALIZEH®
BOLD & BEAUTIFUL



ALIZEH®
BOLD & BEAUTIFUL







Elegance

EXPERIENCE THE BEAUTY OF TRADITION
AND THE MODERNITY OF FASHION.
OUR WEAVE CAPTURES THE ESSENCE
OF INDIA'S CULTURAL HERITAGE,
BLENDED WITH THE LATEST TRENDS.
YOUR FASHION IS OUR PASSION.

3014



GULBAHAAR

Vol -3

ALIZEH
BOLD & BEAUTIFUL

