

**Epic**®



**Rosemeen**®

IMAGE CHIKANKARI  
COLLECTION

**Epic**®



**Rosemeen**®

IMAGE CHIKANKARI  
COLLECTION

**Fepic**<sup>®</sup>



**Rosemeen**<sup>®</sup>

IMAGE CHIKANKARI  
COLLECTION

D.NO.46024

**Epic**



**Rosemeen**<sup>®</sup>  
IMAGE CHIKANKARI  
COLLECTION  
D.NO.46023





**Fepic**<sup>®</sup>

**Rosemeen**<sup>®</sup>

IMAGE CHIKANKARI  
COLLECTION

D.NO.46027

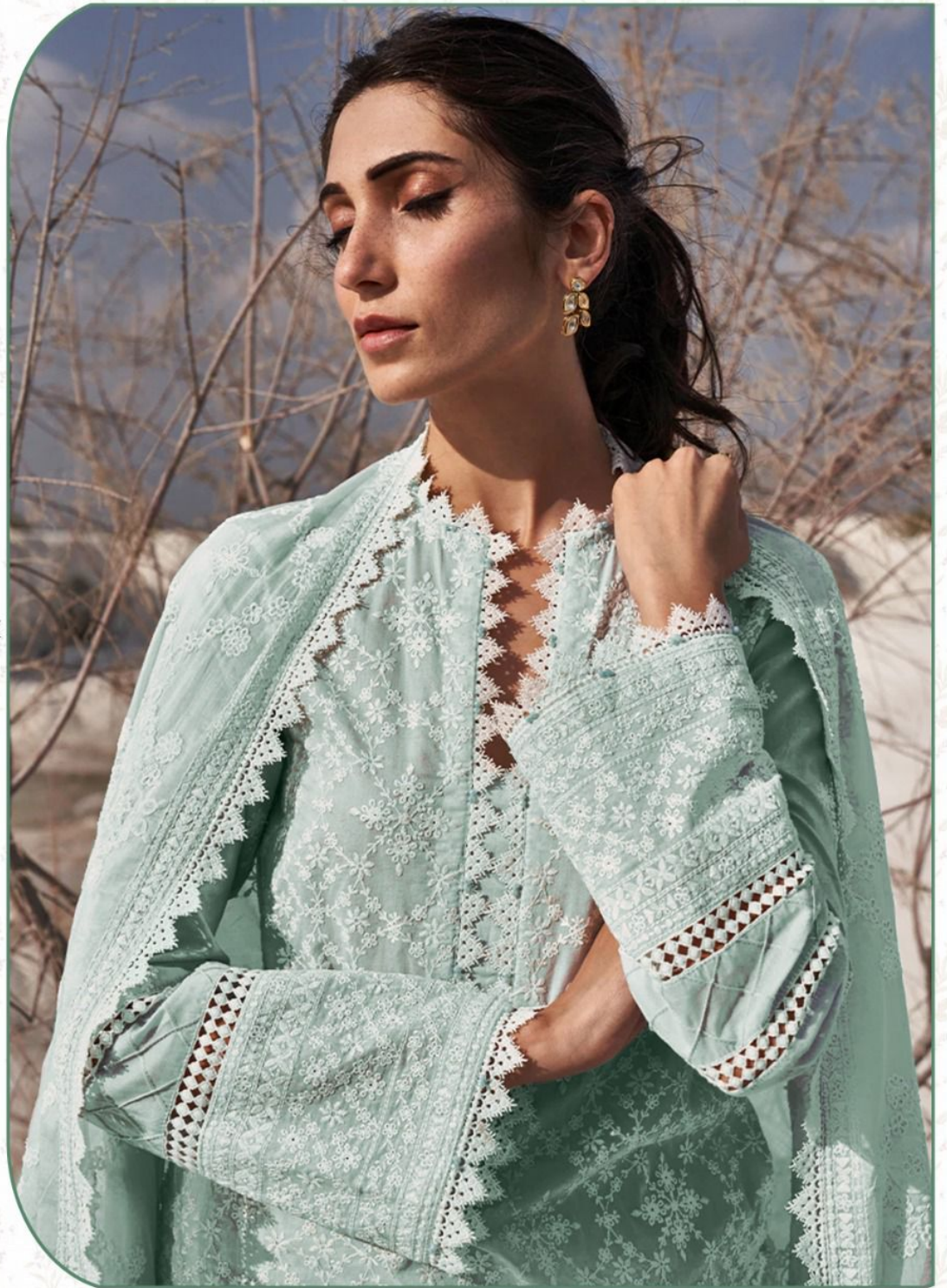


**Fepic**<sup>®</sup>

**Rosemeen**<sup>®</sup>

IMAGE CHIKANKARI  
COLLECTION

D.NO.46021



**Fepic®**



**WASHING INTRUCTIONS**

DO NOT USE ANY TYPE OF BLEACH OR STAIN REMOVING CHEMICALS  
BEFORE CUTTING / STITCHING, FABRIC SHOULD BE SOAKED IN WATER  
( ALL COMPONENTS SEPARATELY ) FOR 15 MINUTES  
DO NOT KEEP WET FABRIC IN TWISTED FROM IN ORDER TO AVOID COPY MARKS |  
WASH COLOURED AND WHITE FABRICS SEPARATELY  
IRON CLOTHES AT MODERATE TEMPERATURE | DO NOT DRY FABRIC IN DIRECT SUNLIGHT  
( EXTRA LACES, HANGINGS AND ACCESSORIES ARE NOT INDEDUDED )

**Rosemeen®**

IMAGE CHIKANKARI  
COLLECTION

D.NO.46021



**Epic**®



**Rosemeen**®

IMAGE CHIKANKARI  
COLLECTION



**Fepic®**



**WASHING INTRUCTIONS**

DO NOT USE ANY TYPE OF BLEACH OR STAIN REMOVING CHEMICALS  
BEFORE CUTTING / STITCHING, FABRIC SHOULD BE SOAKED IN WATER  
( ALL COMPONENTS SEPARATELY ) FOR 15 MINUTES  
DO NOT KEEP WET FABRIC IN TWISTED FROM IN ORDER TO AVOID COPY MARKS |  
WASH COLOURED AND WHITE FABRICS SEPARATELY  
IRON CLOTHES AT MODERATE TEMPERATURE | DO NOT DRY FABRIC IN DIRECT SUNLIGHT  
( EXTRA LACES, HANGINGS AND ACCESSORIES ARE NOT INDDUED )

**Rosemeen®**  
IMAGE CHIKANKARI  
COLLECTION  
D.NO.46024



**Fepic®**



**WASHING INTRUCTIONS**

DO NOT USE ANY TYPE OF BLEACH OR STAIN REMOVING CHEMICALS  
BEFORE CUTTING / STITCHING. FABRIC SHOULD BE SOAKED IN WATER  
( ALL COMPONENTS SEPARATELY ) FOR 15 MINUTES  
DO NOT KEEP WET FABRIC IN TWISTED FROM IN ORDER TO AVOID COPY MARKS |  
WASH COLOURED AND WHITE FABRICS SEPARATELY  
IRON CLOTHES AT MODERATE TEMPERATURE | DO NOT DRY FABRIC IN DIRECT SUNLIGHT  
( EXTRA LACES, HANGINGS AND ACCESSORIES ARE NOT INDUDED )

**Rosemeen®**

IMAGE CHIKANKARI  
COLLECTION

D.NO.46026





D No  
46021

Fepic

ROSEMEEN  
Fepic



D.NO.46021



D.NO.46022



D.NO.46023



D.NO.46024



D.NO.46025



D.NO.46026




D.NO.46027

**Fepic**<sup>®</sup>

**Rosemeen**<sup>®</sup>  
IMAGE CHIKANKARI  
COLLECTION

 :\_Fepic

 :Fb.com/Fepic11



**Fepic®**



**WASHING INTRUCTIONS**

DO NOT USE ANY TYPE OF BLEACH OR STAIN REMOVING CHEMICALS  
BEFORE CUTTING / STITCHING. FABRIC SHOULD BE SOAKED IN WATER  
( ALL COMPONENTS SEPARATELY ) FOR 15 MINUTES  
DO NOT KEEP WET FABRIC IN TWISTED FROM IN ORDER TO AVOID COPY MARKS |  
WASH COLOURED AND WHITE FABRICS SEPARATELY  
IRON CLOTHES AT MODERATE TEMPERATURE | DO NOT DRY FABRIC IN DIRECT SUNLIGHT  
( EXTRA LACES, HANGINGS AND ACCESSORIES ARE NOT INLUDED )

**Rosemeen®**

**IMAGE CHIKANKARI  
COLLECTION**

D.NO.46025

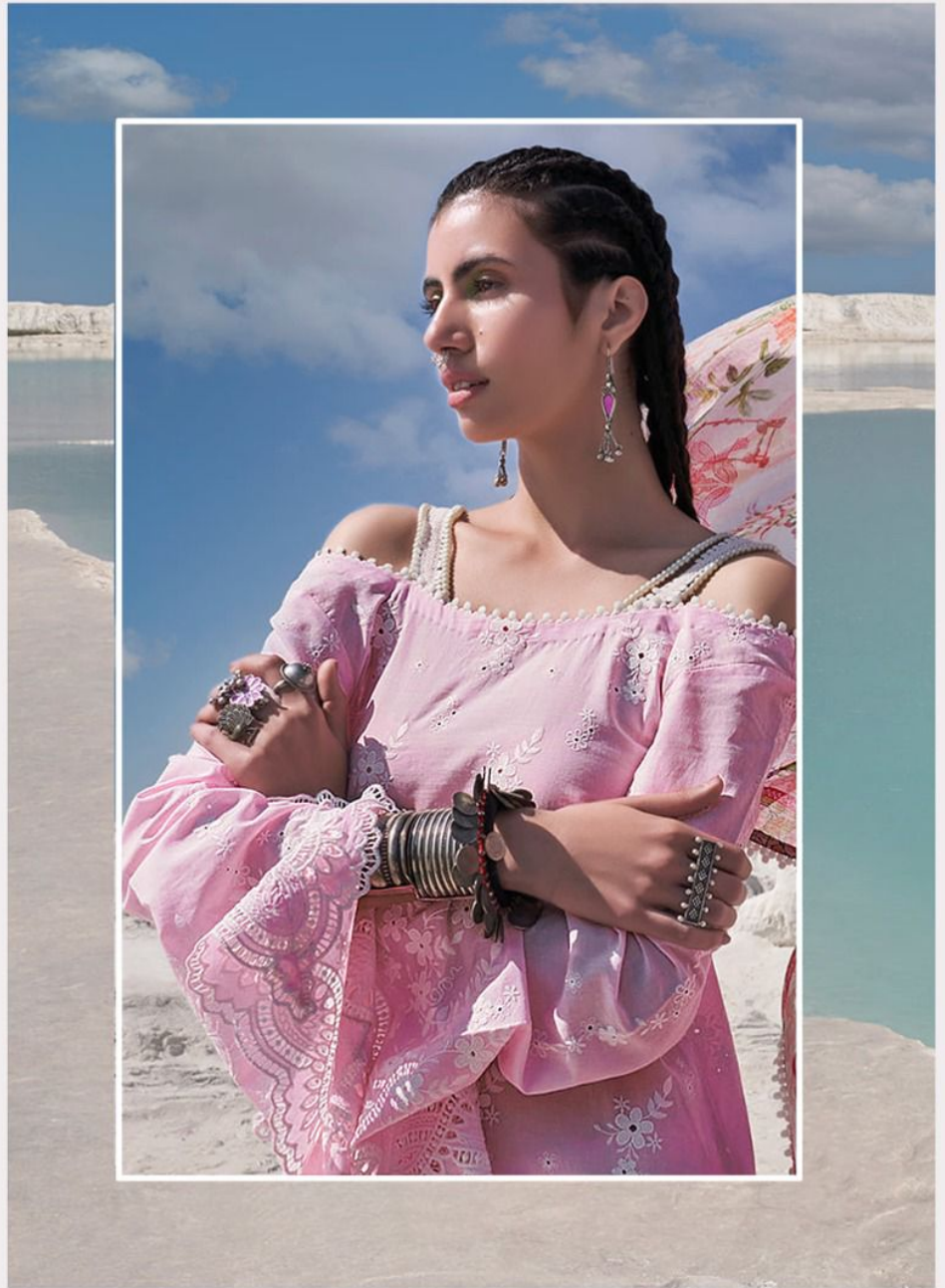


**Fepic**<sup>®</sup>

**Rosemeen**<sup>®</sup>

IMAGE CHIKANKARI  
COLLECTION

D.NO.46025



**Fepic®**



**WASHING INTRUCTIONS**

DO NOT USE ANY TYPE OF BLEACH OR STAIN REMOVING CHEMICALS  
BEFORE CUTTING / STITCHING, FABRIC SHOULD BE SOAKED IN WATER  
( ALL COMPONENTS SEPARATELY ) FOR 15 MINUTES  
DO NOT KEEP WET FABRIC IN TWISTED FROM IN ORDER TO AVOID COPY MARKS |  
WASH COLOURED AND WHITE FABRICS SEPARATELY  
IRON CLOTHES AT MODERATE TEMPERATURE | DO NOT DRY FABRIC IN DIRECT SUNLIGHT  
( EXTRA LACES, HANGINGS AND ACCESSORIES ARE NOT INDDUED )

**Rosemeen®**

IMAGE CHIKANKARI  
COLLECTION

D.NO.46022



**Fepic®**



**WASHING INTRUCTIONS**

DO NOT USE ANY TYPE OF BLEACH OR STAIN REMOVING CHEMICALS  
BEFORE CUTTING / STITCHING, FABRIC SHOULD BE SOAKED IN WATER  
( ALL COMPONENTS SEPARATELY ) FOR 15 MINUTES  
DO NOT KEEP WET FABRIC IN TWISTED FROM IN ORDER TO AVOID COPY MARKS |  
WASH COLOURED AND WHITE FABRICS SEPARATELY  
IRON CLOTHES AT MODERATE TEMPERATURE | DO NOT DRY FABRIC IN DIRECT SUNLIGHT  
( EXTRA LACES, HANGINGS AND ACCESSORIES ARE NOT INDDUED )

**Rosemeen®**

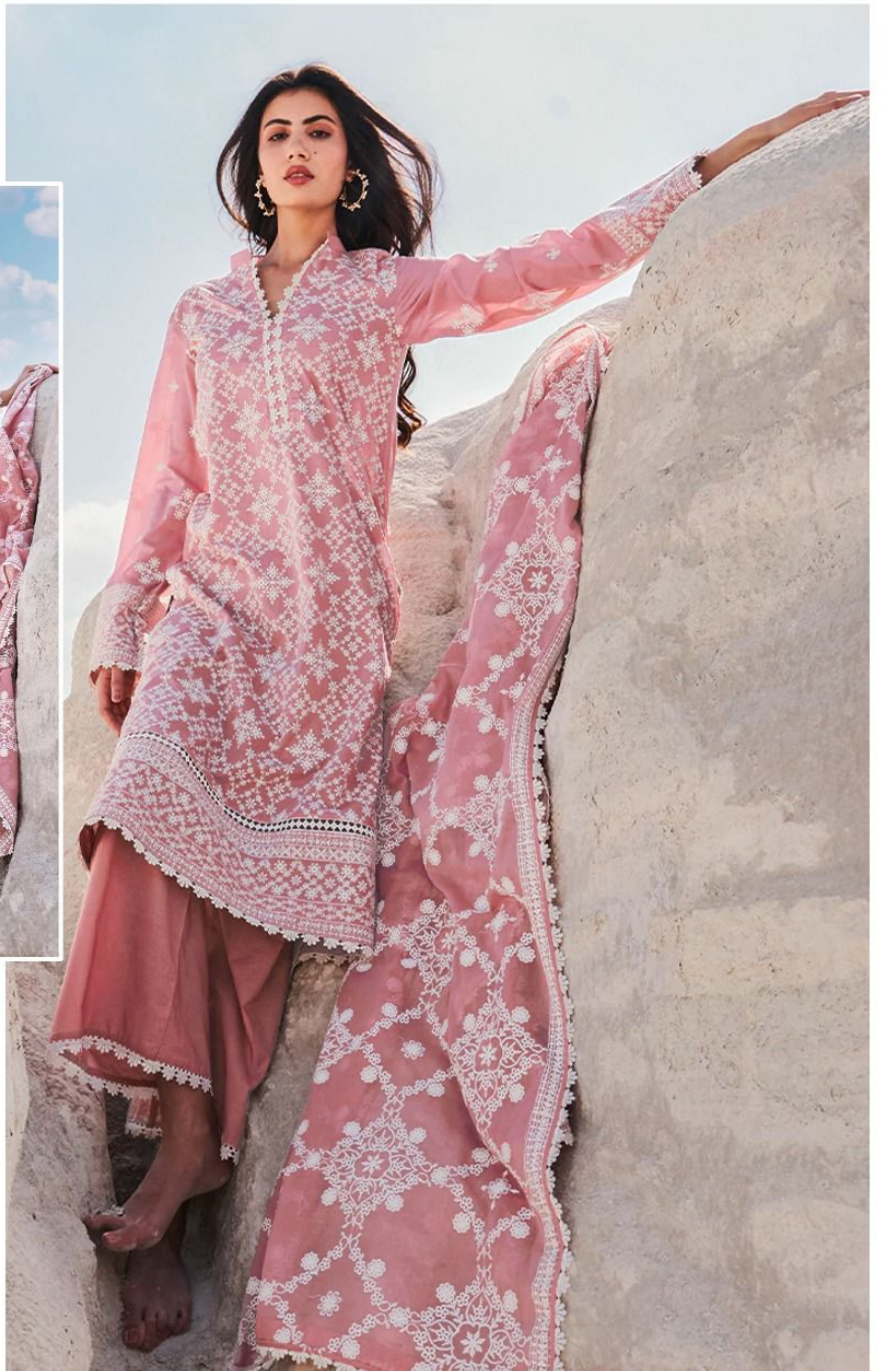
IMAGE CHIKANKARI  
COLLECTION

D.NO.46023





**Fepic®**



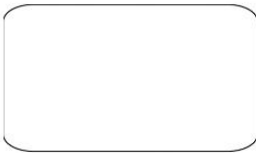
**WASHING INTRUCTIONS**

DO NOT USE ANY TYPE OF BLEACH OR STAIN REMOVING CHEMICALS  
BEFORE CUTTING / STITCHING, FABRIC SHOULD BE SOAKED BE SOAKED IN WATER  
( ALL COMPONENTS SEPARATELY ) FOR 15 MINUTES  
DO NOT KEEP WET FABRIC IN TWISTED FROM IN ORDER TO AVOID COPY MARKS |  
WASH COLOURED AND WHITE FABRICS SEPARATELY  
IRON CLOTHES AT MODERATE TEMPERATURE | DO NOT DRY FABRIC IN DIRECT SUNLIGHT  
( EXTRA LACES, HANGINGS AND ACCESSORIES ARE NOT INDUDED )

**Rosemeen®**

IMAGE CHIKANKARI  
COLLECTION

D.NO.46027



**Epic**<sup>®</sup>

**Rosemeen**<sup>®</sup>

IMAGE CHIKANKARI  
COLLECTION

D.NO.46026

