



**Fabrics Details**

**TOP: GEORGETTE WITH EMBROIDERY**

**BOTTOM: SANTOON**

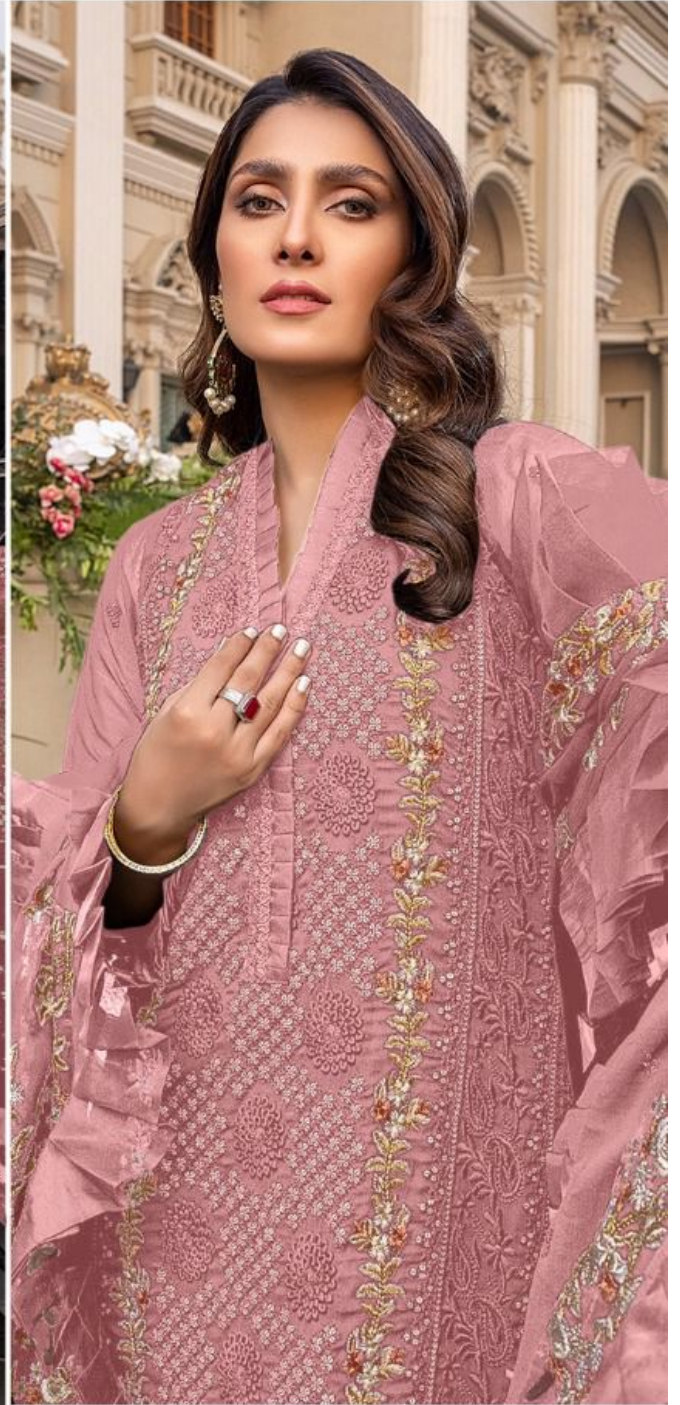
**DUPATTA: NAZMIN WITH FRILL**

**Care Instructions**

**Code:-D-143**



- >Dry clean recommended
- >Do not use anytype of bleach or stain removing chemicals.
- > Do not overexpose damp fabrics to strong sunlight.
- >Iron at moderate temperature.



**Fabrics Details**

**TOP: GEORGETTE WITH EMBROIDERY**

**BOTTOM: SANTOON**

**DUPATTA: NAZMIN WITH FRILL**

**Care Instructions**

**Code:-D-143**



- >Dry clean recommended
- >Do not use anytype of bleach or stain removing chemicals.
- > Do not overexpose damp fabrics to strong sunlight.
- >Iron at moderate temperature.



**B**  
**BEEPSY**  
DESIGN



**Fabric Details**  
100% Polyester with Embroidery  
Soft Silk Linings  
100% Cotton Underwear

**Care Instructions**  
Wash: Hand Wash  
Dry: Line Dry  
Iron: Iron on reverse side  
Do not use bleach or dyes  
Do not use iron directly on the fabric  
Do not use steam iron

Code: 02-1432



**Fabrics Details**

**TOP: GEORGETTE WITH EMBROIDERY**

**BOTTOM: SANTOON**

**DUPATTA: NAZMIN WITH FRILL**

**Care Instructions**

**Code:-D-143**



>Dry clean recommended

- >Do not use anytype of bleach or stain removing chemicals.
- > Do not overexpose damp fabrics to strong sunlight.
- >Iron at moderate temperature.



**LIBEINSY**

**Fabrics Details**  
100% Satin with a fine embroidery

**Care Instructions**  
Dry clean recommended  
Do not use any color of bleach or other whitening substances  
Do not use commercial stain removers or ironing board

Shampoo



**DEJINSY**

**Care Instructions**

Code: D-1434

**Fabric Details**

TOP: 100% Polyester with Embroidery  
BOTTOM: 100% Polyester with Embroidery

**Care Instructions**

- 1. Dry clean recommended
- 2. Do not use bleach or harsh or color removing chemicals
- 3. Do not iron directly on fabric. Iron inside out, if necessary, at moderate temperature.



TOP: GEORGETTE WITH EMBROIDERY

BOTTOM: SANTOON

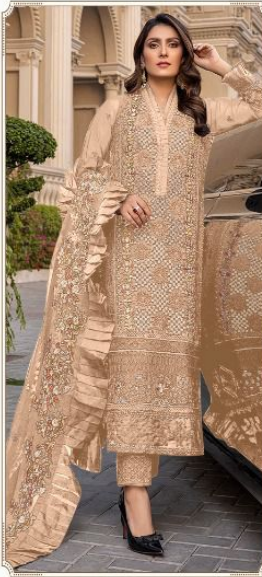
DUPATTA: NAZMIN WITH FRILL



D-143A



D-143B



D-143C



D-143D



**Fabrics Details**

**TOP: GEORGETTE WITH EMBROIDERY**

**BOTTOM: SANTOON**

**DUPATTA: NAZMIN WITH FRILL**

**Care Instructions**

**Code:-D-143**



- >Dry clean recommended
- >Do not use anytype of bleach or stain removing chemicals.
- > Do not overexpose damp fabrics to strong sunlight.
- >Iron at moderate temperature.





**Fabrics Details**

**TOP: GEORGETTE WITH EMBROIDERY**

**BOTTOM: SANTOON**

**DUPATTA: NAZMIN WITH FRILL**

**Care Instructions**

**Code:-D-143**



- >Dry clean recommended
- >Do not use anytype of bleach or stain removing chemicals.
- > Do not overexpose damp fabrics to strong sunlight.
- >Iron at moderate temperature.



**Fabrics Details**

TOP: **GEORGETTE WITH EMBROIDERY**

BOTTOM: **SANTOON**

DUPATTA: **NAZMIN WITH FRILL**

**Care Instructions**

Code:-D-143



- >Dry clean recommended
- >Do not use anytype of bleach or stain removing chemicals.
- > Do not overexpose damp fabrics to strong sunlight.
- >Iron at moderate temperature.