



# AFREEN - B



**TOP-** FOX GEORGET WITH HEAVY EMBROIDERY  
**BOTTOM-** DULL SANTOON  
**DUPATTA -** GEORGET WITH HEAVY EMBROIDERY

Ⓟ DRY CLEAN ONLY.  
ⓧ DO NOT USE ANY BLEACH OR STAIN REMOVING CHEMICAL.  
Ⓜ IRON THE FABRIC AT MODERATE TEMPERATURE.





# AFREEN - B



**TOP**- FOX GEORGET WITH HEAVY EMBROIDERY  
**BOTTOM**- DULL SANTOON  
**DUPATTA** - GEORGET WITH HEAVY EMBROIDERY

Ⓟ DRY CLEAN ONLY.  
ⓧ DO NOT USE ANY BLEACH OR STAIN REMOVING CHEMICAL.  
🧊 IRON THE FABRIC AT MODERATE TEMPERATURE.

Ramsha®  
AFREEN-NX



Ramsha®  
AFREEN-NX



# AFREEN - A



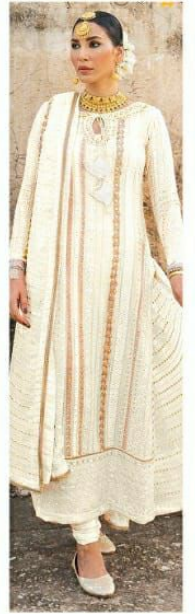
# AFREEN - B



# AFREEN - C



# AFREEN - D

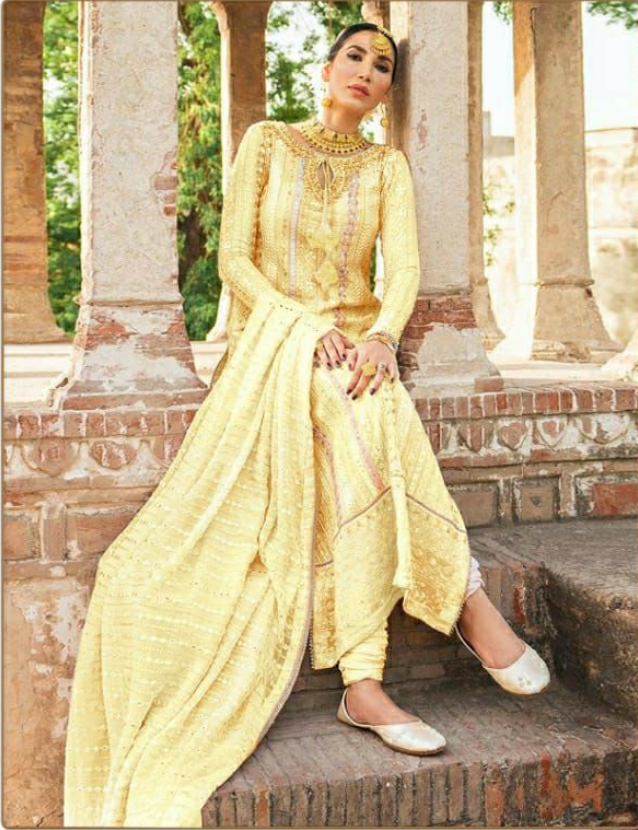


# AFREEN - E





# AFREEN - D



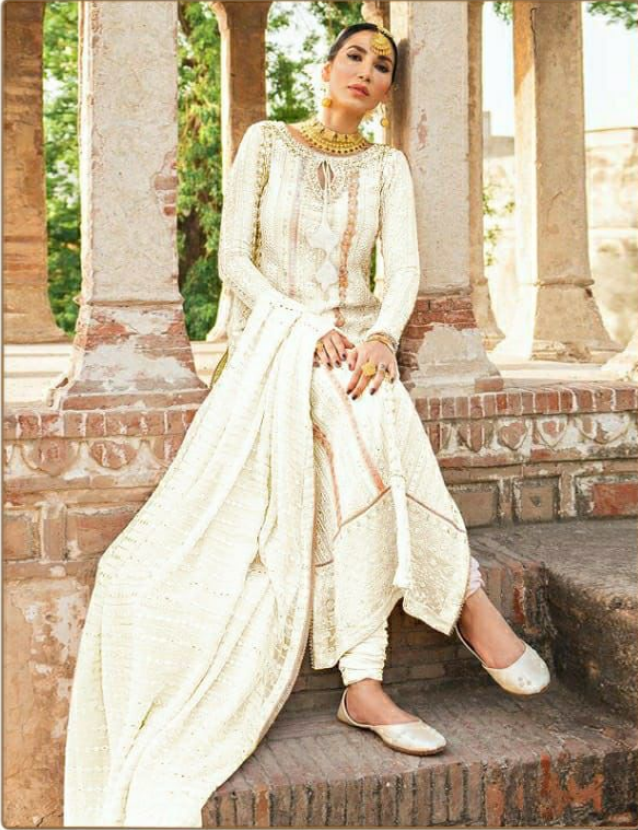
TOP- FOX GEORGET WITH HEAVY EMBROIDERY  
BOTTOM- DULL SANTOON  
DUPATTA - GEORGET WITH HEAVY EMBROIDERY

Ⓟ DRY CLEAN ONLY.  
ⓧ DO NOT USE ANY BLEACH OR STAIN REMOVING CHEMICAL.  
🧊 IRON THE FABRIC AT MODERATE TEMPERATURE.



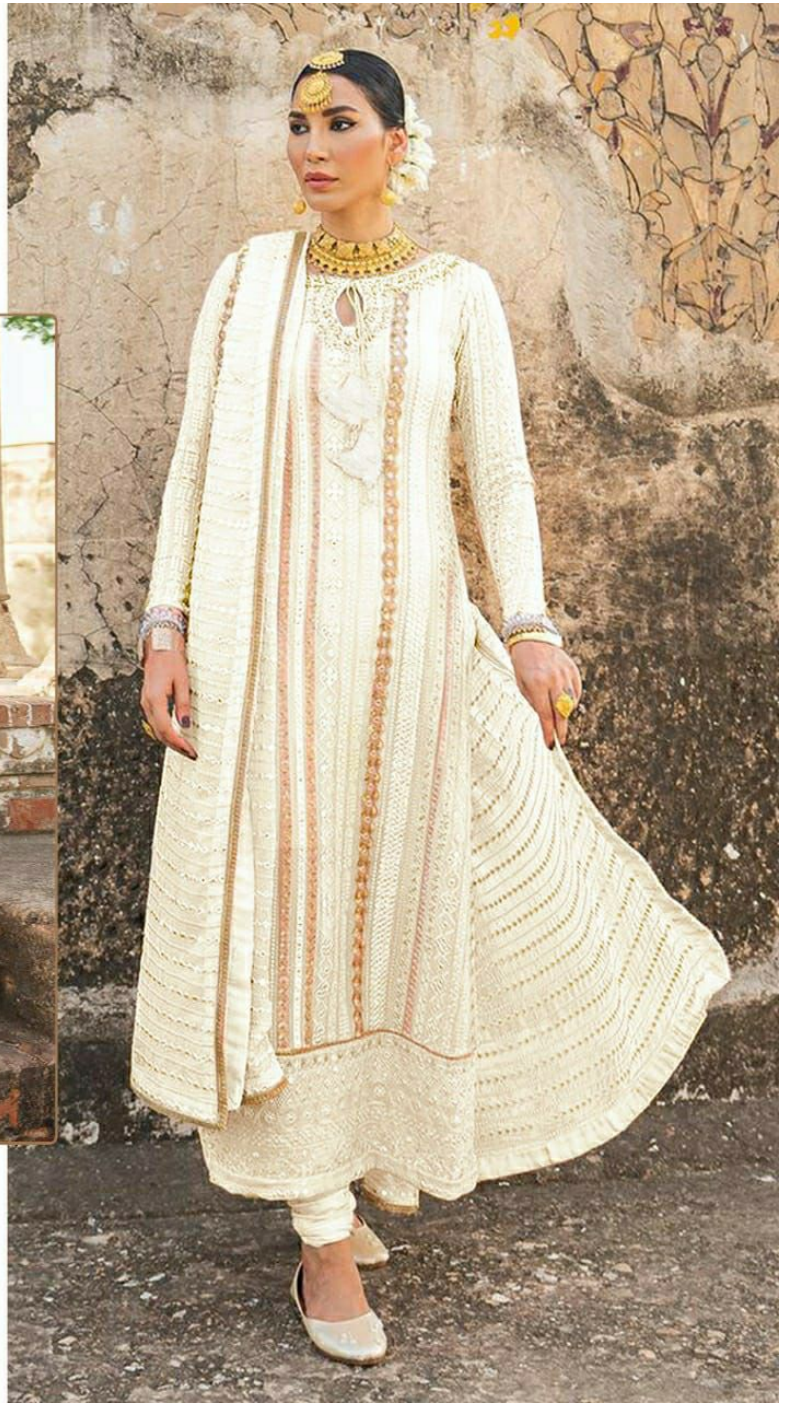


# AFREEN - E



TOP- FOX GEORGET WITH HEAVY EMBROIDERY  
BOTTOM- DULL SANTOON  
DUPATTA - GEORGET WITH HEAVY EMBROIDERY

Ⓟ DRY CLEAN ONLY.  
ⓧ DO NOT USE ANY BLEACH OR STAIN REMOVING CHEMICAL.  
☎ IRON THE FABRIC AT MODERATE TEMPERATURE.







# AFREEN - B



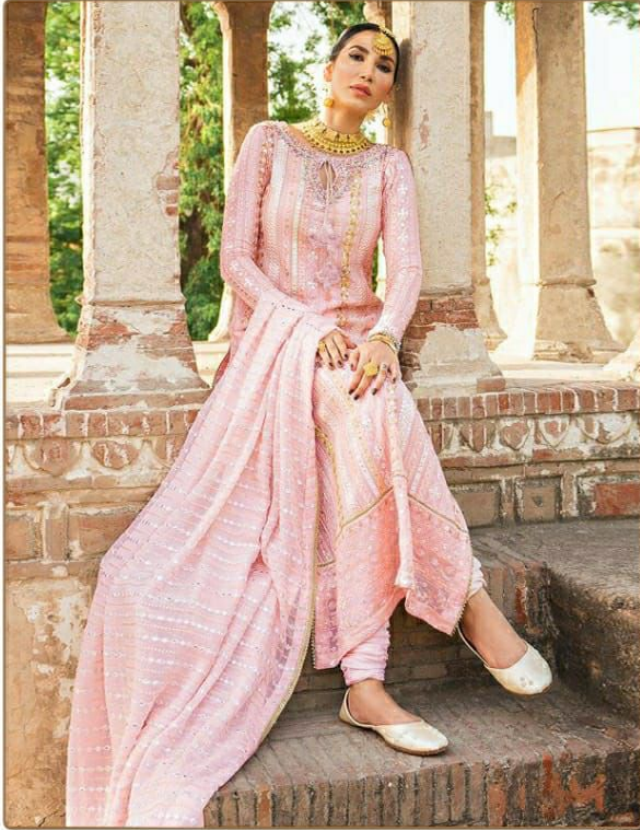
**TOP-** FOX GEORGET WITH HEAVY EMBROIDERY  
**BOTTOM-** DULL SANTOON  
**DUPATTA -** GEORGET WITH HEAVY EMBROIDERY

Ⓟ DRY CLEAN ONLY.  
ⓧ DO NOT USE ANY BLEACH OR STAIN REMOVING CHEMICAL.  
🧊 IRON THE FABRIC AT MODERATE TEMPERATURE.





# AFREEN - C



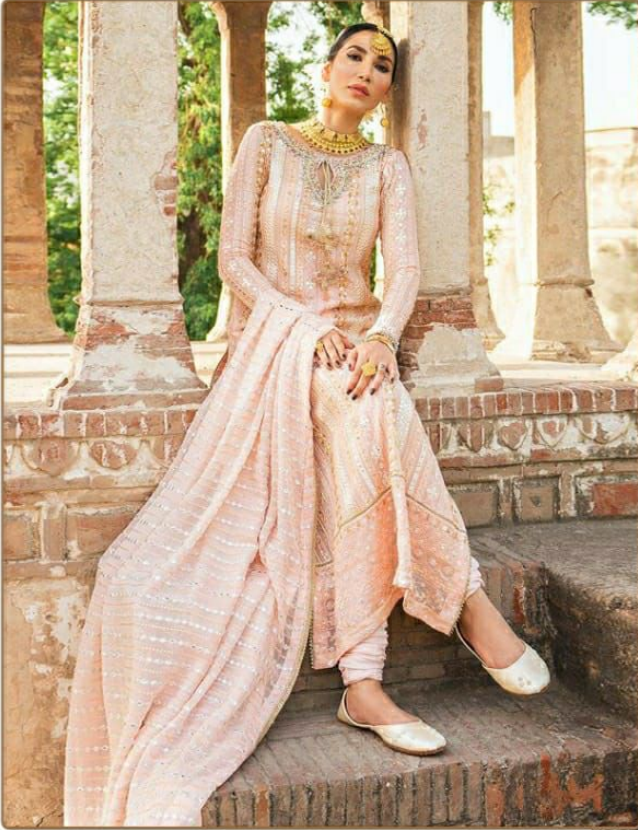
TOP- FOX GEORGET WITH HEAVY EMBROIDERY  
BOTTOM- DULL SANTOON  
DUPATTA - GEORGET WITH HEAVY EMBROIDERY

Ⓟ DRY CLEAN ONLY.  
ⓧ DO NOT USE ANY BLEACH OR STAIN REMOVING CHEMICAL.  
☎ IRON THE FABRIC AT MODERATE TEMPERATURE.





## # AFREEN - A



**TOP**- FOX GEORGET WITH HEAVY EMBROIDERY  
**BOTTOM**- DULL SANTOON  
**DUPATTA** - GEORGET WITH HEAVY EMBROIDERY

Ⓟ DRY CLEAN ONLY.  
✘ DO NOT USE ANY BLEACH OR STAIN REMOVING CHEMICAL.  
☎ IRON THE FABRIC AT MODERATE TEMPERATURE.

