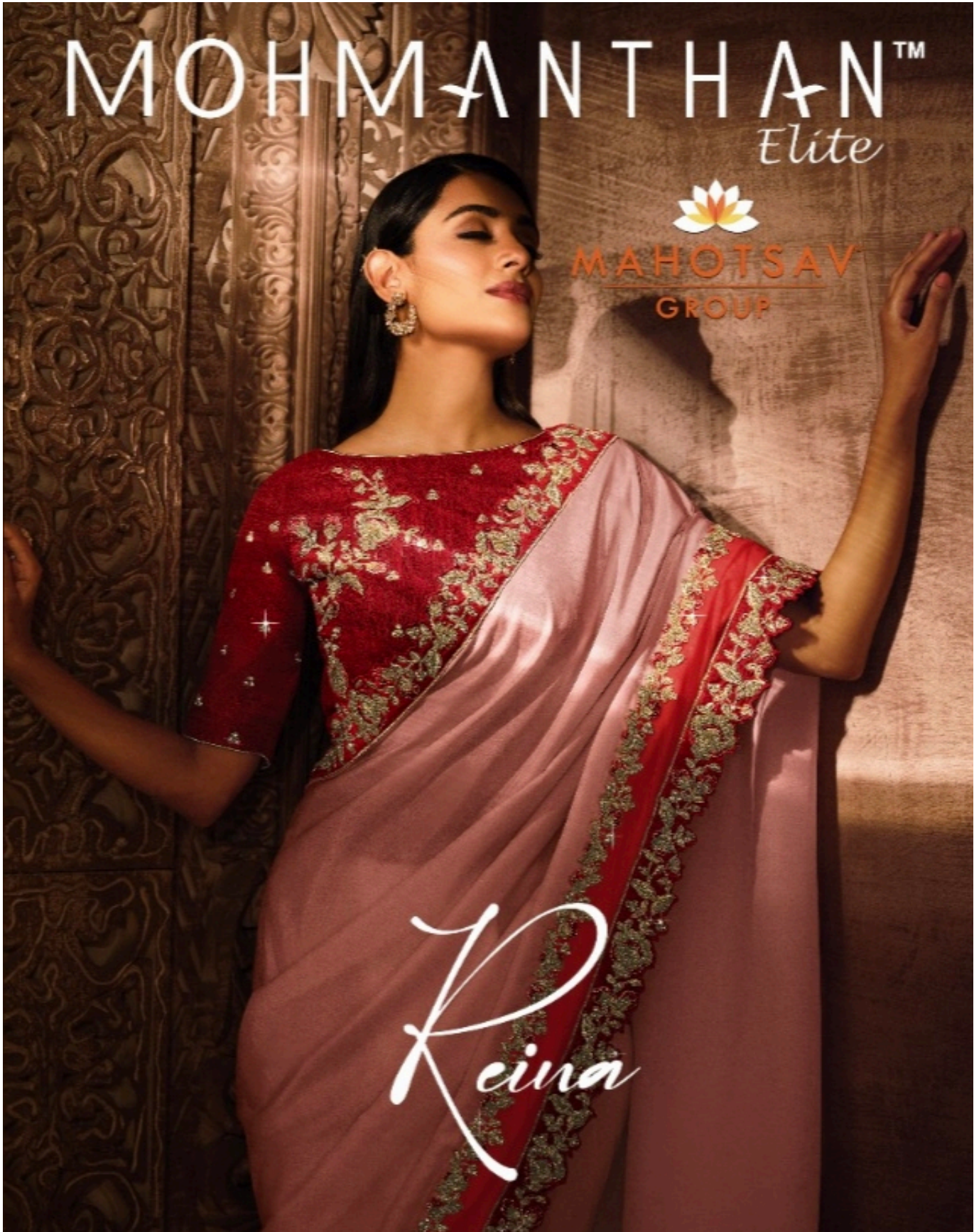


MOHMANZHAN™
Elite



MAHOTSAV
GROUP

Keina

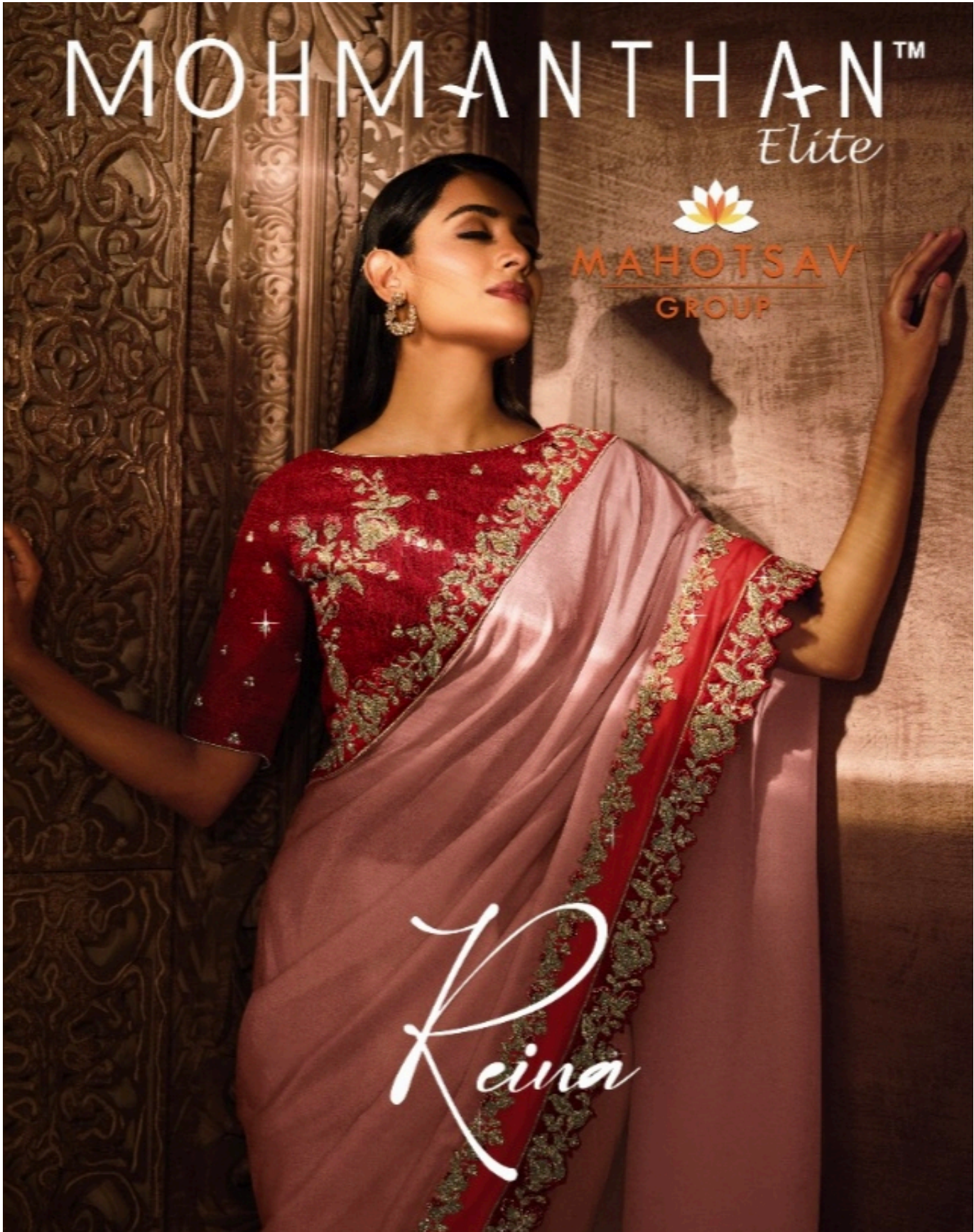


MOHMANZHAN™
Elite



MAHOTSAV
GROUP

Keina



21710



suave
Corgious, shaded saree in tan pink, purple and blue embroidered with star-like motifs and designer embroidery



MOHMAN THAN™

Elite



MAHOTSAV
GROUP

We don't Create fashion. We are fashion.



AVAILABLE AT ALL LEADING
SHOWROOMS GLOBALLY.

WE WELCOME YOUR
FEEDBACK & SUGGESTION

feedback@mahotsavgroup.com
www.mahotsavgroup.com

NOW FOLLOW MAHOTSAVGROUP ON



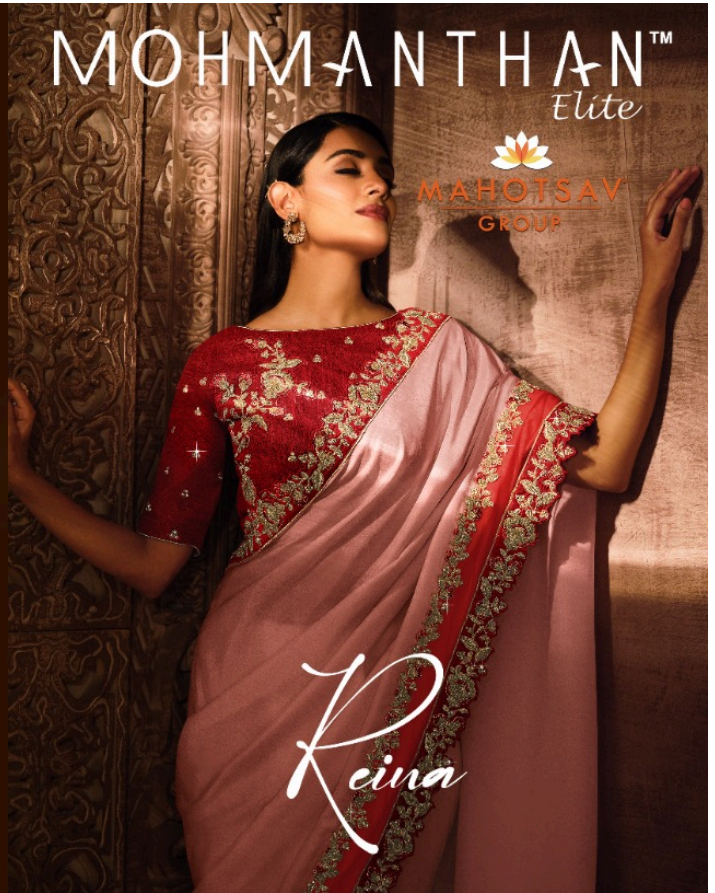
*complimentary copy / not for sale

Mahotsav Creation Pvt. Ltd. All Right Reserved

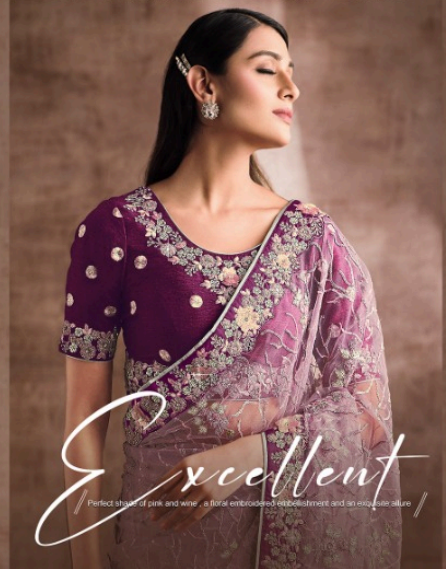
This Catalogue is protected under the Copyright Act as well as the
various designs of the catalogue are protected under the Design Act
apart from its title. Unauthorized publication or reproduction or use of any
individual photo of the catalogue and or Design of Dress is punishable
offence in accordance to the law in force.

Complimentary copy not for sale

Helpline : +91 8000945000



21721



Perfect blend of pink and wine, a floral embroidery embellishment and an exquisite allure



Composed
Creativity crafted with tradition, elegance and grace in harmony.







21714





21720



Sophisticated
Shades of green and net into a combination of silk and net is a winner of subtlety

21716



Marvelous

The vibrant shade of red adorned with statement shoulder buds imparts an incredible appeal



21719



21717

Breathtaking



Soft sea green net embellished with ornate floral embroidery for a breath-taking demeanor



21717 / Fabric : Net

21724



Deluxe

Statement short dhoti, dark shade of royal blue, ruffled shoulder border and delicate fabric - exquisite at its best.







Enamoring
Floral veil and deep jewel tones... perfection comes and with a grace.





MOHMANZHAN™ *Elite*

WITH THE FESTIVITIES IN FULL SWING, WE PRESENT A GORGEOUS COLLECTION OF MODERN SAREES - *Re* UNDER OUR BRAND MOHMANZHAN. EVERY SAREE IN THIS COLLECTION HAS BEEN THREADED TO FUSE, JEWELLED WORK, MIRROR EMBROIDERY INTO A MIX OF ELEMENTS LIKE RESHAM, ZARI, CUT WORK AND EVEN FRILLS.

WHAT CAN YOU CALL THIS COLLECTION?

WE'D LIKE TO CALL THIS COLLECTION 'THE ROYAL QUEEN' BECAUSE EACH SAREE IN THE COLLECTION IS MAGNIFICENTLY DESIGNED TO FIT INTO YOUR DREAMS OF LOOKING LIKE A ROYALTY.

WHERE CAN YOU WEAR THESE SAREES?

A PERFECT COLLECTION FOR YOUR WEDDING/FESTIVE OCCASIONS.

HOW CAN YOU STYLE THEM ?

THESE MODERN AND STUNNING SAREES CAN BE STYLED IN VARIETY OF WAYS. ALL WE'D RECOMMEND TO YOU IS WEAR YOUR PERSONALITY AND ADD ONE SINGLE STATEMENT JEWEL TO FINISH THE LOOK.

WHICH COLORS ARE IN THE COLLECTION ?

CONSIDERING THE UPCOMING FESTIVITIES AND WEDDINGS, THE COLLECTION IS FULL OF DEEP JEWEL TONES FROM TEAL BLUES, TO REDS AND GREENS AS WELL AS STUNNING PASTEL SHADES.

WHO CAN WEAR THEM?

WOMEN WHO LIKE TO DRESS TO THE NINES, LIKE TO ADORN IN STUNNING INDIAN ATTIRE AND FLAUNT THEM AS GODDESSES.







21708

21709

21710

21711

21712



21717

21718

21719

21720

21721



21713

21714

21715

21716



21722

21723

21724

21725



Cherished
A lovely vermilion and mellowed floral details for a classic look.

MAHOTSAV GROUP PRESENTS
MOHMANTHAN-Elite
"Reina"

DESIGN NO.	DESCRIPTION	PRICE
21708	DESIGNER SAREE	2685
21709	DESIGNER SAREE	2655
21710	DESIGNER SAREE	3005
21711	DESIGNER SAREE	2705
21712	DESIGNER SAREE	4205
21713	DESIGNER SAREE	2625
21714	DESIGNER SAREE	2865
21715	DESIGNER SAREE	2485
21716	DESIGNER SAREE	2585
21717	DESIGNER SAREE	4085
21718	DESIGNER SAREE	2945
21719	DESIGNER SAREE	2705
21720	DESIGNER SAREE	3155
21721	DESIGNER SAREE	3325
21722	DESIGNER SAREE	2475
21723	DESIGNER SAREE	4025
21724	DESIGNER SAREE	2445
21725	DESIGNER SAREE	2975
5905	DESIGNER SAREE	3305
5909	DESIGNER SAREE	2935
5910	DESIGNER SAREE	3125
5911	DESIGNER SAREE	3355
5915	DESIGNER SAREE	3275
5916	DESIGNER SAREE	3155
21016	DESIGNER SAREE	2865
21106	DESIGNER SAREE	2485
21107	DESIGNER SAREE	2285

NOTE : GST@5% WILL BE CHARGED ON THE ABOVE PRICES.