



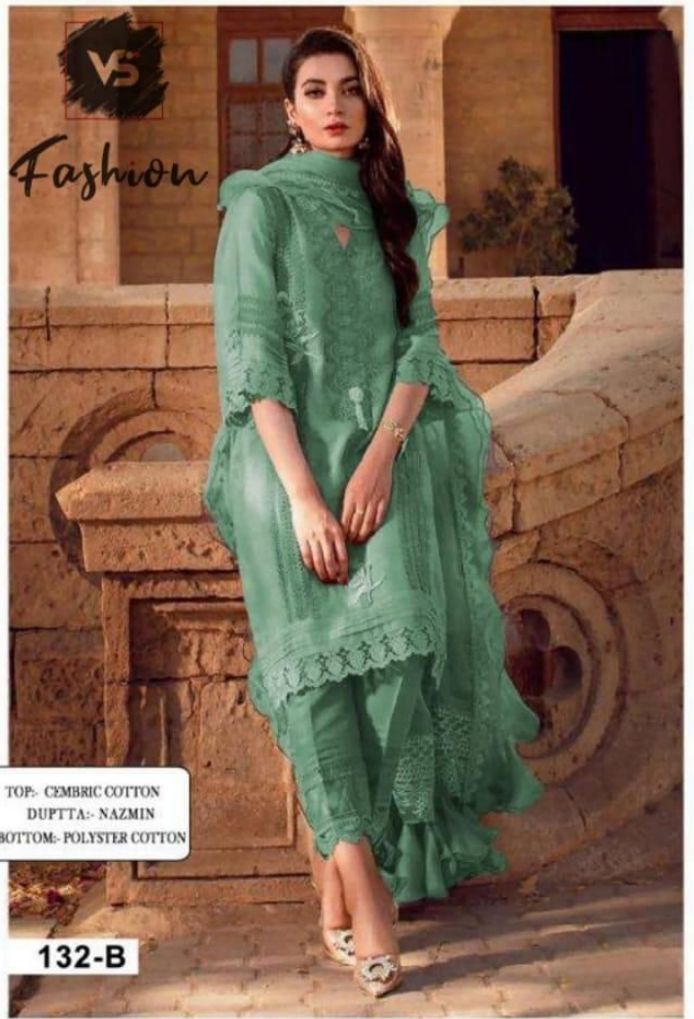
TOP- CEMBRIC COTTON  
DUPTTA:- NAZMIN  
BOTTOM- POLYSTER COTTON

132-C



TOP- CEMBRIC COTTON  
DUPTTA:- NAZMIN  
BOTTOM- POLYSTER COTTON

132-C



TOP- CEMBRIC COTTON  
DUPTTA- NAZMIN  
BOTTOM- POLYSTER COTTON

132-B



TOP- CEMBRIC COTTON  
DUPTTA- NAZMIN  
BOTTOM- POLYSTER COTTON



TOP- CEMBRIC COTTON  
DUPTTA- NAZMIN  
BOTTOM- POLYSTER COTTON

132-E











