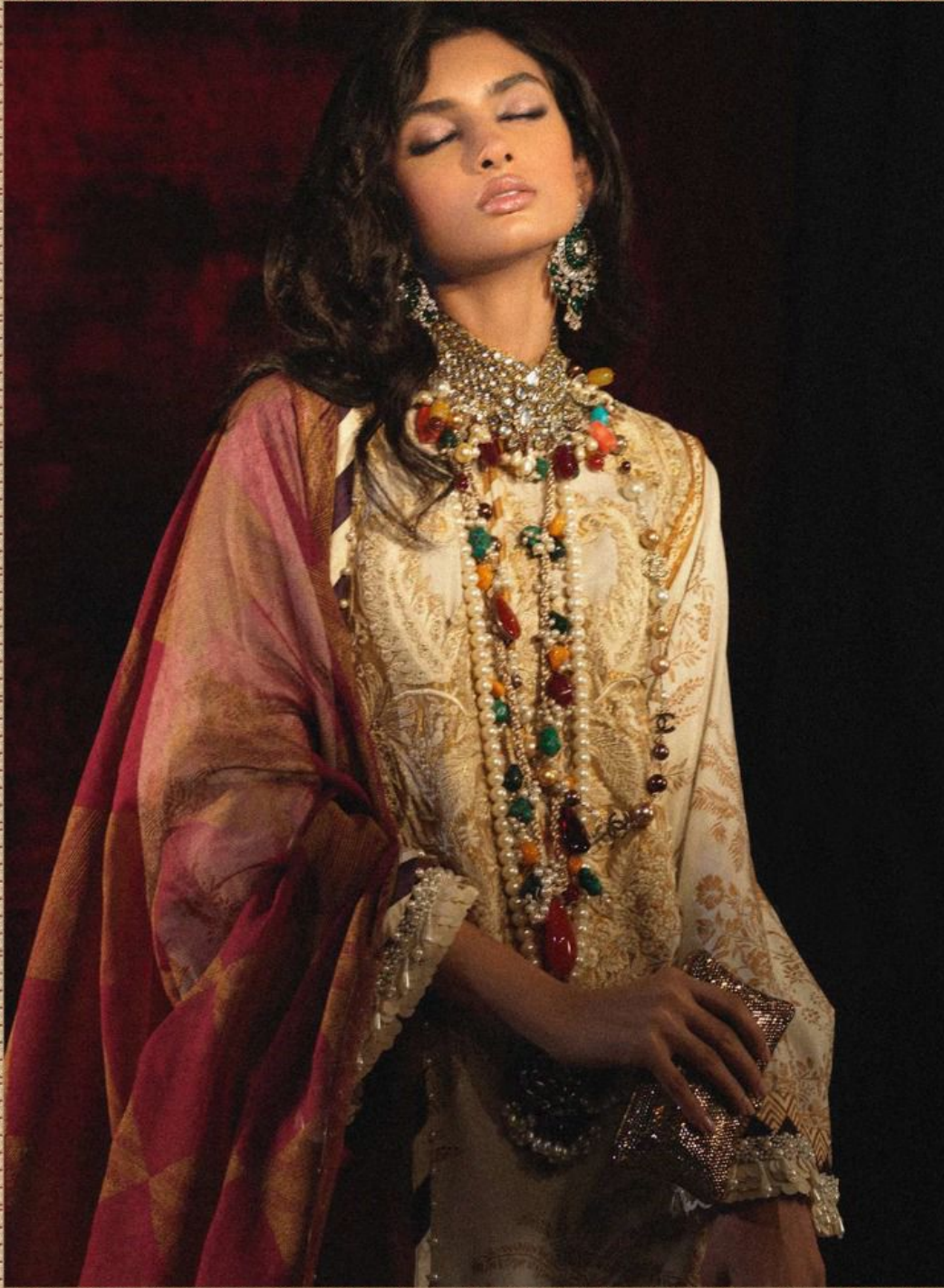


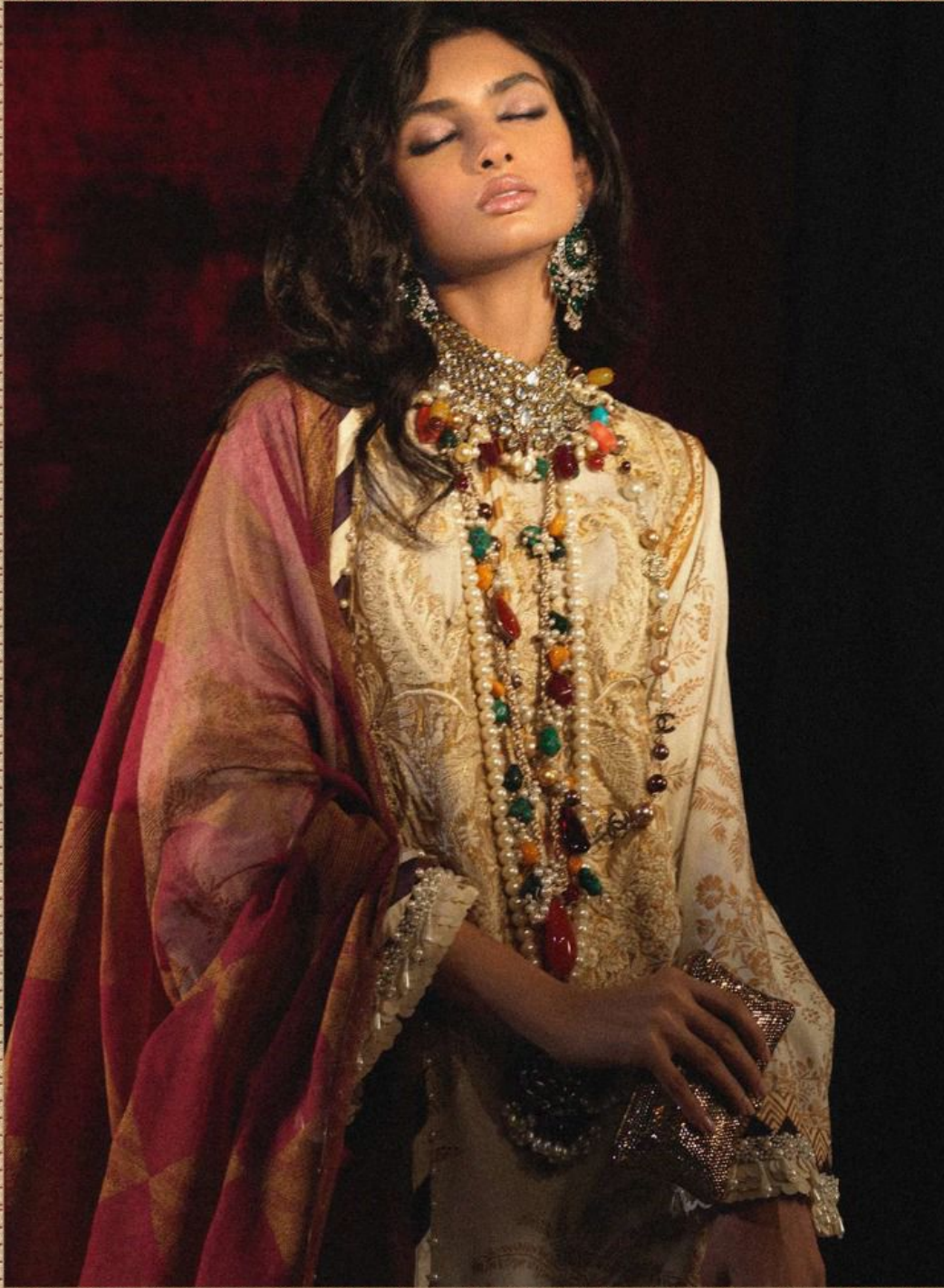
Eepic®



**SANA SAFINAZ**  
*LUXURY LIGHT*



Eepic®



**SANA SAFINAZ**  
*LUXURY LIGHT*



Fepic®



D.NO.43020







D.NO.43015



D.NO.43016



D.NO.43017



D.NO.43018



D.NO.43019



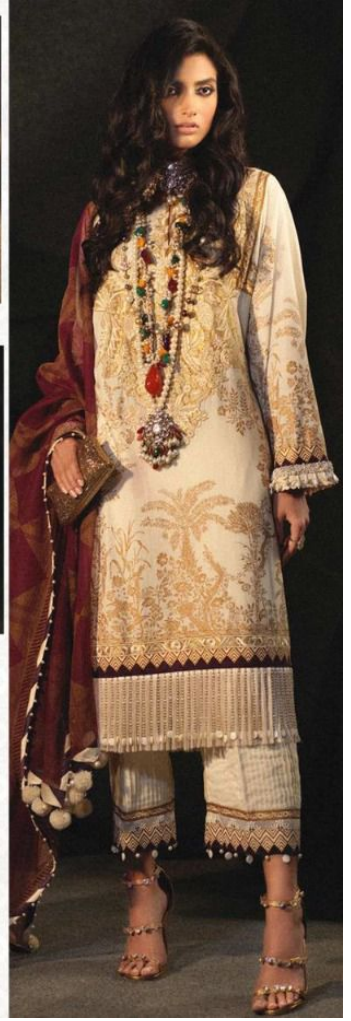
D.NO.43020



D.NO.43021



D.NO.43022



**Fepic**<sup>®</sup>  
**SANA SAFINAZ**  
*LUXURY LIGHT*

:\_Fepic

:Fb.com/Fepic11



Fepic®



D.NO.43018



**Fepic**<sup>®</sup>



◆ D.NO.43019 ◆



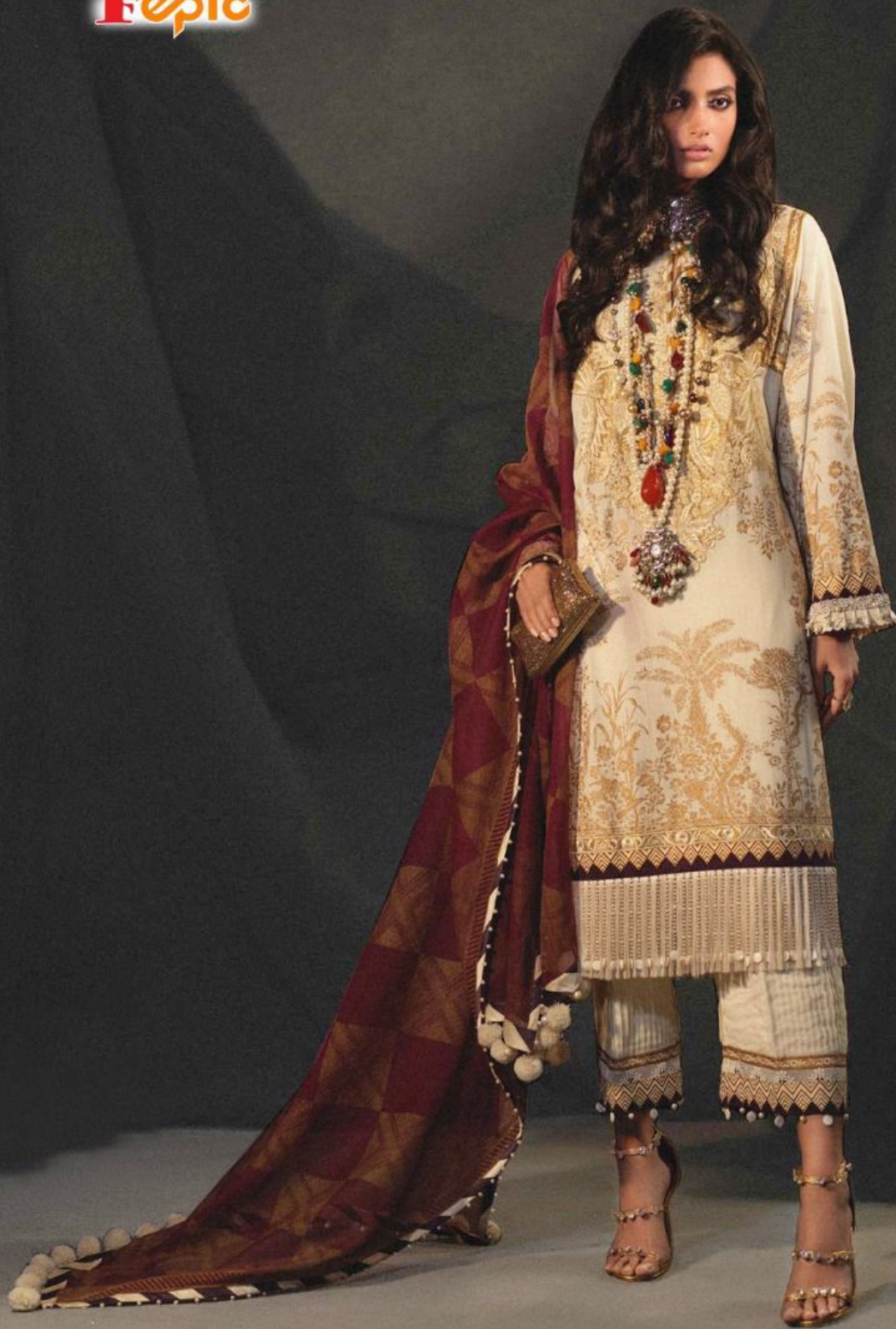
**Epic**<sup>®</sup>



◆ D.NO.43015 ◆



Fepic®



D.NO.43017



Fepic®



D.NO.43018





D.NO.43015



D.NO.43016



D.NO.43017



D.NO.43018



D.NO.43019



D.NO.43020



D.NO.43021

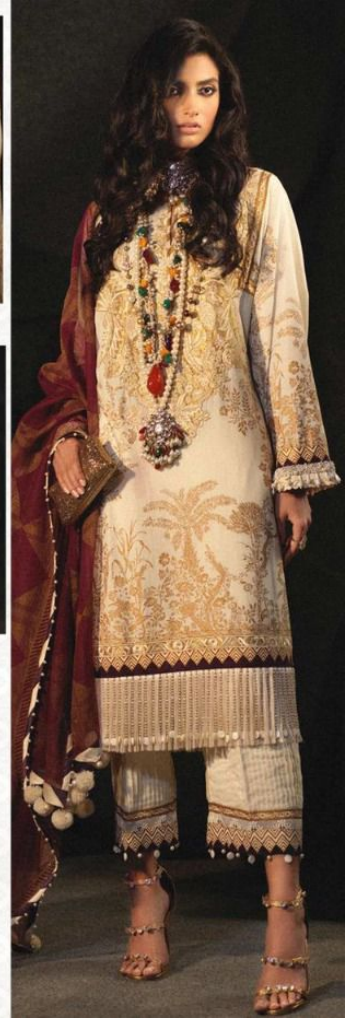


D.NO.43022

**Fepic**<sup>®</sup>  
**SANA SAFINAZ**  
*LUXURY LIGHT*

:\_Fepic

:Fb.com/Fepic11





Fepic®



D.NO.43020



IS ABOUT TO CHANGE









**Fepic**<sup>®</sup>



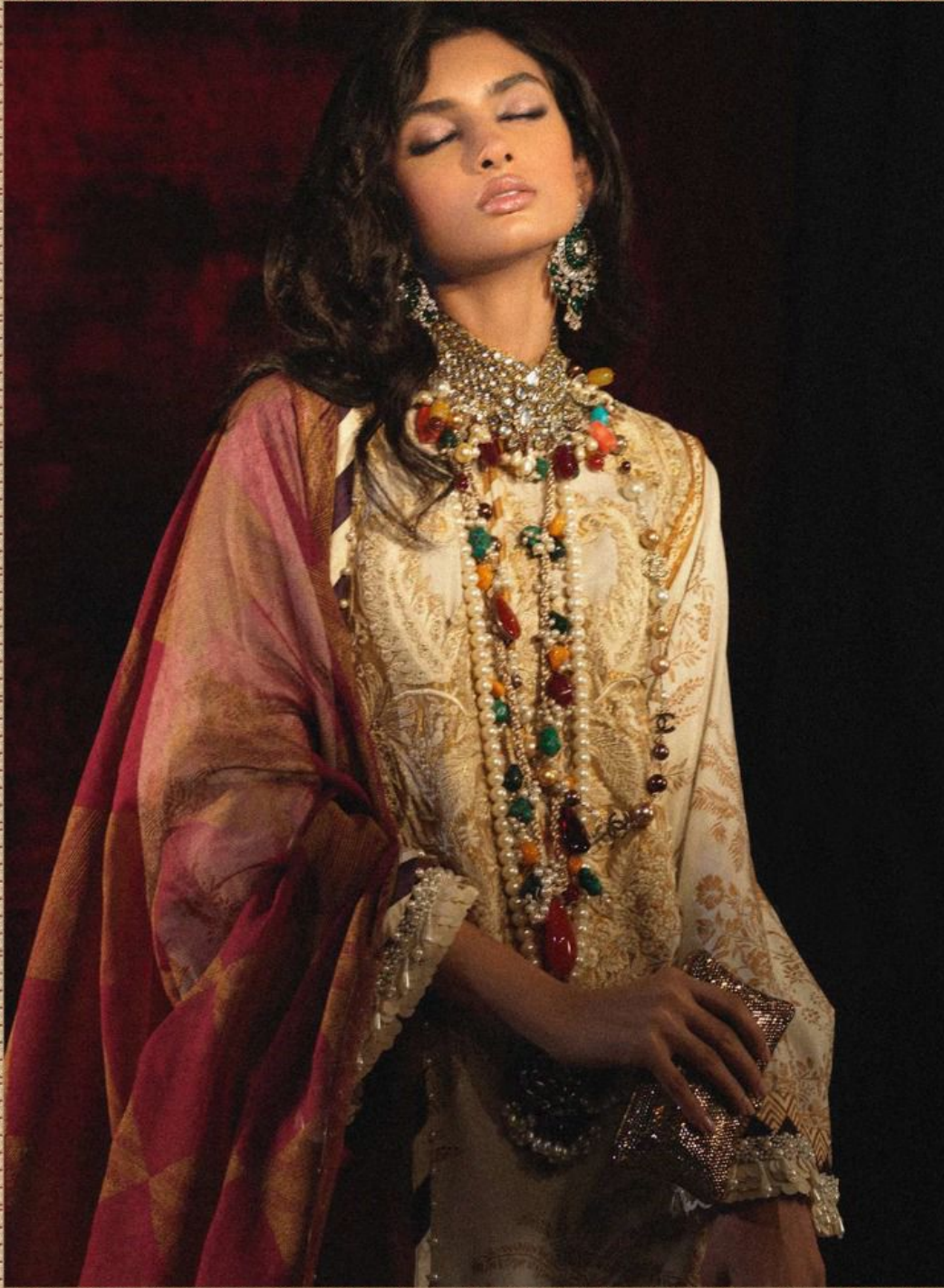
◆ D.NO.43019 ◆





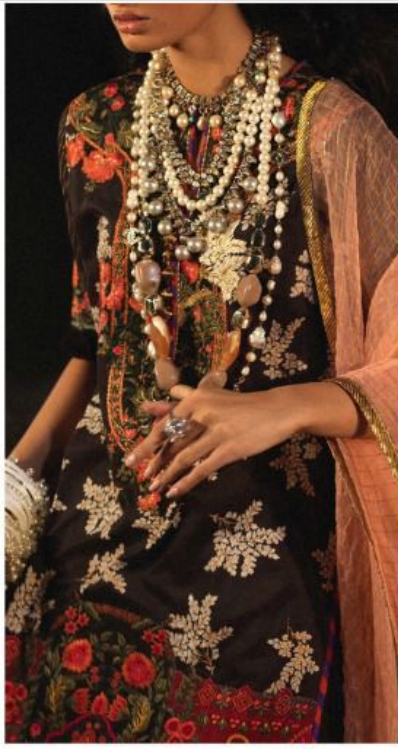


Eepic®

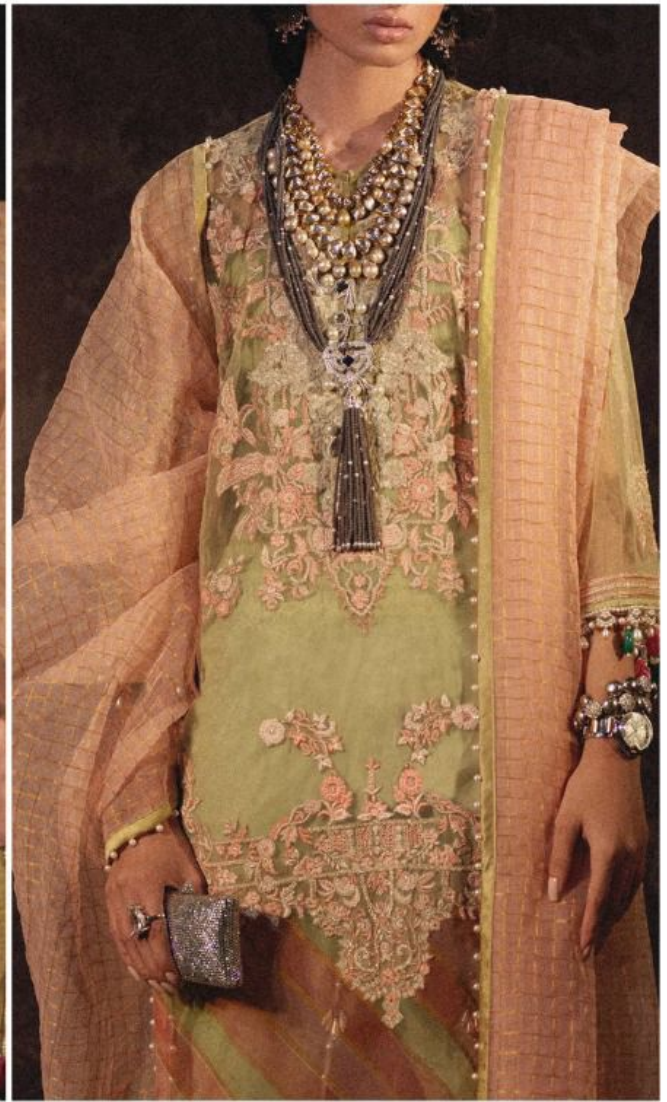


**SANA SAFINAZ**  
*LUXURY LIGHT*















D.NO	TOP	BOTTOM	DUPATTA	RATE
43015	PURE COTTON PRINTED WITH EMBROIDERED PATCHES	CHIFFON PRINTED WITH LACE	SEMILAWN WITH EMBROIDERED PATCHES	941
43016	PURE COTTON PRINTED WITH EMBROIDERED PATCHES	CHIFFON PRINTED WITH LACE	SEMILAWN WITH EMBROIDERED PATCHES	941
43017	PURE COTTON PRINTED WITH EMBROIDERED PATCHES	CHIFFON PRINTED WITH LACE	SEMILAWN DYED	881
43018	PURE COTTON PRINTED WITH EMBROIDERED PATCHES	CHIFFON PRINTED WITH LACE	SEMILAWN DYED	881
43019	HEAVY NET EMBROIDERED WITH BACK AND SLEEVE WORK INNER PURE COTTON PRINTED	ORGANZA CHAQUES WITH DIGITAL BUNCHES AND LACE	SEMILAWN DYED	1051
43020	PURE COTTON PRINTED WITH EMBROIDERED PATCHES	ORGANZA CHAQUES EITH LACE	SEMILAWN DYED	921
43021	PURE COTTON PRINTED WITH EMBROIDERED PATCHES	ORGANZA CHAQUES EITH LACE	SEMILAWN DYED	921
43022	PURE COTTON PRINTED WITH EMBROIDERED PATCHES	ORGANZA CHAQUES WITH DIGITAL BUNCHES AND LACE	SEMILAWN DYED	1051
AVG RATE-949				

**Fepic**<sup>®</sup> **SANA SAFINAZ**  
LUXURY LIGHT

 :\_Fepic

 :Fb.com/Fepic11



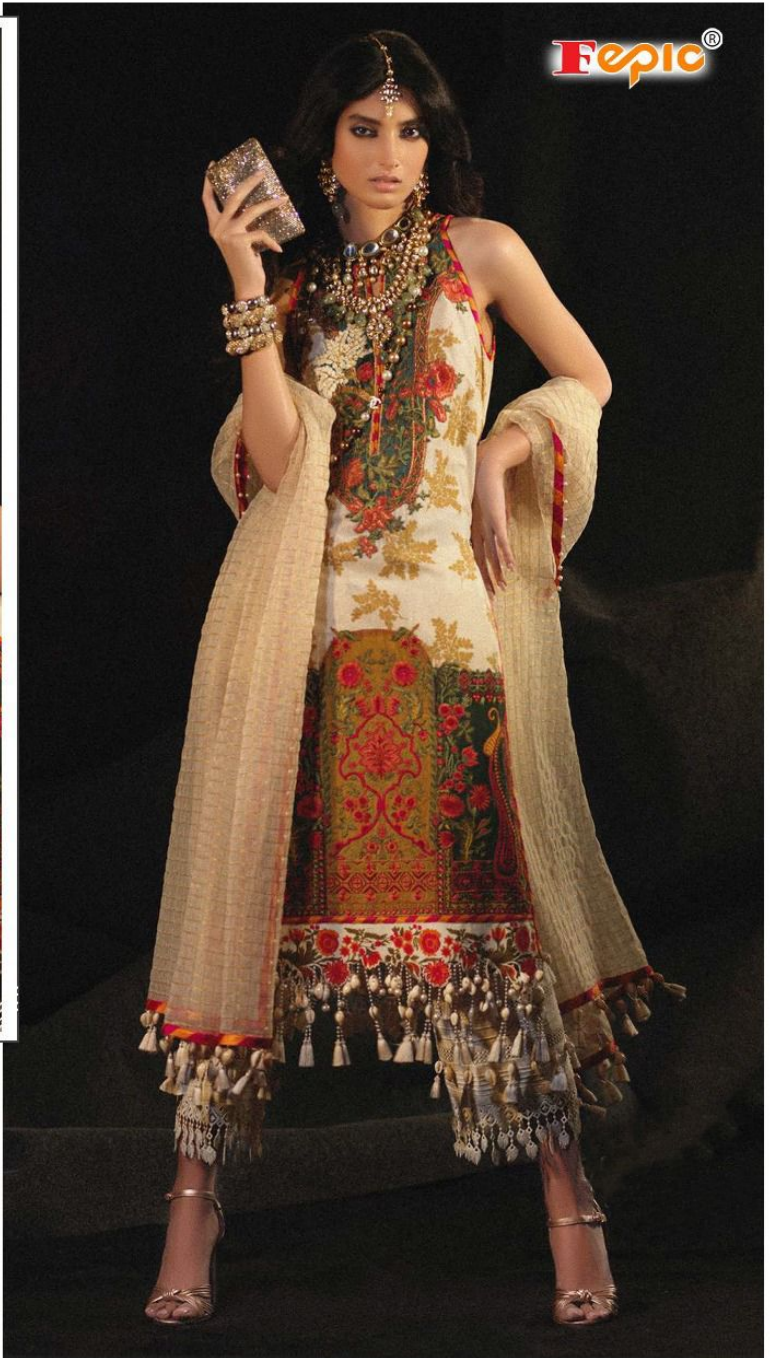
Fepic®



◆ D.NO.43022 ◆



**FePIC®**



**WASHING INTRUCTIONS**

DO NOT USE ANY TYPE OF BLEACH OR STAIN REMOVING CHEMICALS  
BEFORE CUTTING / STITCHING, FABRIC SHOULD BE SOAKED BE SOAKED IN WATER  
( ALL COMPONENTS SEPARATELY ) FOR 15 MINUTES  
DO NOT KEEP WET FABRIC IN TWISTED FROM IN ORDER TO AVOID COPY MARKS |  
WASH COLOURED AND WHITE FABRICS SEPARATELY  
IRON CLOTHES AT MODERATE TEMPERATURE | DO NOT DRY FABRIC IN DIRECT SUNLIGHT  
( EXTRA LACES, HANGINGS AND ACCESSORIES ARE NOT INDUDED )

**D.NO.43021**

**SANA SAFINAZ**  
*LUXURY LIGHT*





Fepic®



D.NO.43021





D.NO.43015



D.NO.43016



D.NO.43017



D.NO.43018



D.NO.43019



D.NO.43020



D.NO.43021



D.NO.43022

**Fepic**<sup>®</sup>  
**SANA SAFINAZ**  
*LUXURY LIGHT*

:\_Fepic

:Fb.com/Fepic11

