

A woman with long, dark, wavy hair is seated on a wooden chair. She is wearing a sleeveless, light pink dress with a vibrant floral and botanical print in shades of green, blue, and brown. Her eyes are closed, and she has a serene expression. She is wearing large, ornate earrings with circular frames and intricate details. The background is softly blurred, showing a wooden chair and some green foliage. The overall mood is calm and elegant.

FIRDOUS
URBANE-5



1165



1165



1161





1161



1162



1165



1166



1163



1164



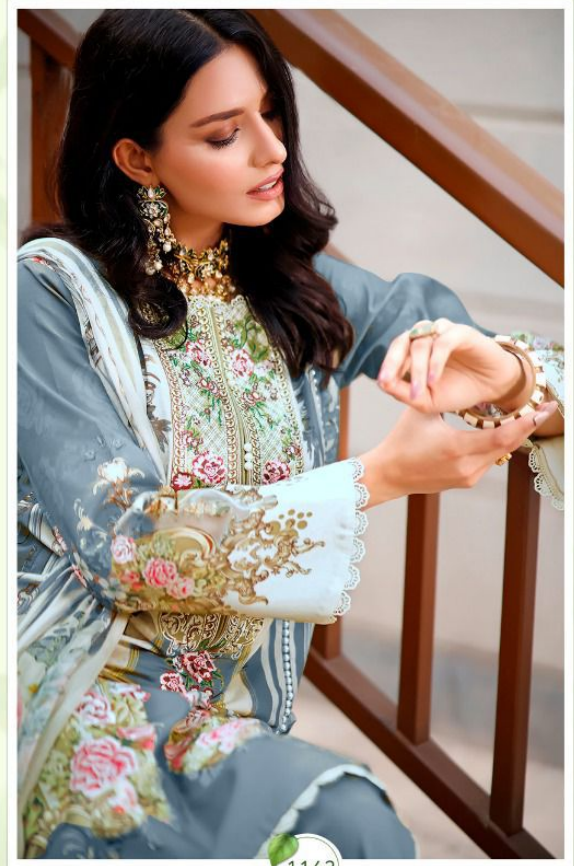
1167



1168



1162



1163



A woman with long, dark, wavy hair is seated on a wooden chair. She is wearing a sleeveless, light pink dress with a vibrant floral and botanical print in shades of green, blue, and brown. Her eyes are closed, and she has a serene expression. She is wearing large, ornate earrings with circular frames and hanging beads. The background is softly blurred, showing a wooden chair and some green foliage. The overall lighting is warm and natural.

FIRDOUS
URBANE-5







1167



1164