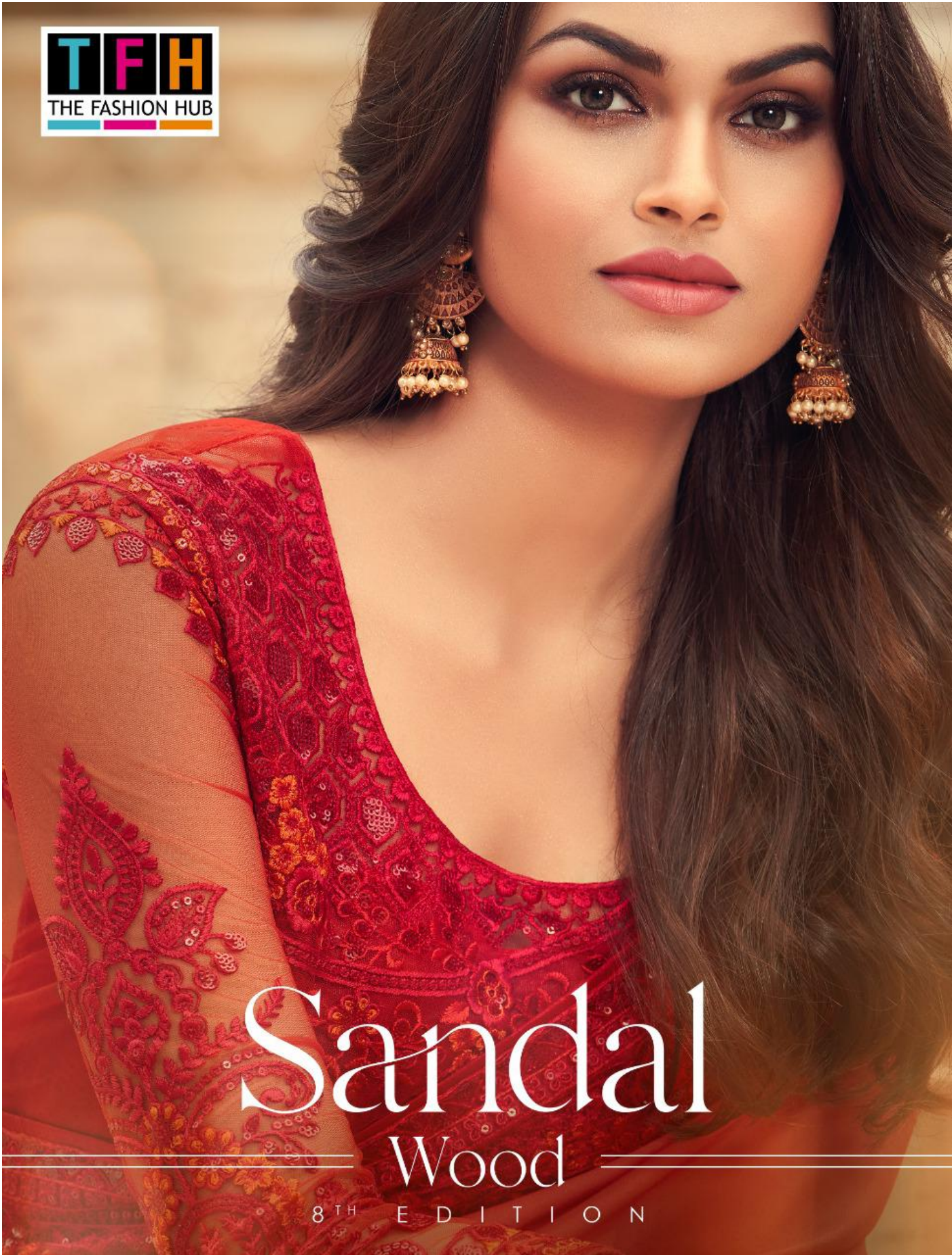


Sandal

Wood

8TH EDITION



Sandal

Wood

8TH EDITION



TEH
The Art of Fashion

A brilliant stone is taken to the next level
when the skill of a great mason...
it is stylish and timeless.

SW-814



TFH
THE FASHION HUB

A vibrant yellow saree with a pop of orange at the bottom.
This is the beauty of contrasting colors. The work done is so subtle and elegant, all over it.
SW-802



TFH
THE FASHION HUB

The unique and detailed
characteristics of the saree
are linked to the quality of the fabric.
SW-811

TFH
THE FASHION HUB



Georgette saree with floral embroidery blouse.
Fabric: 100% silk and sequins and
SW-818



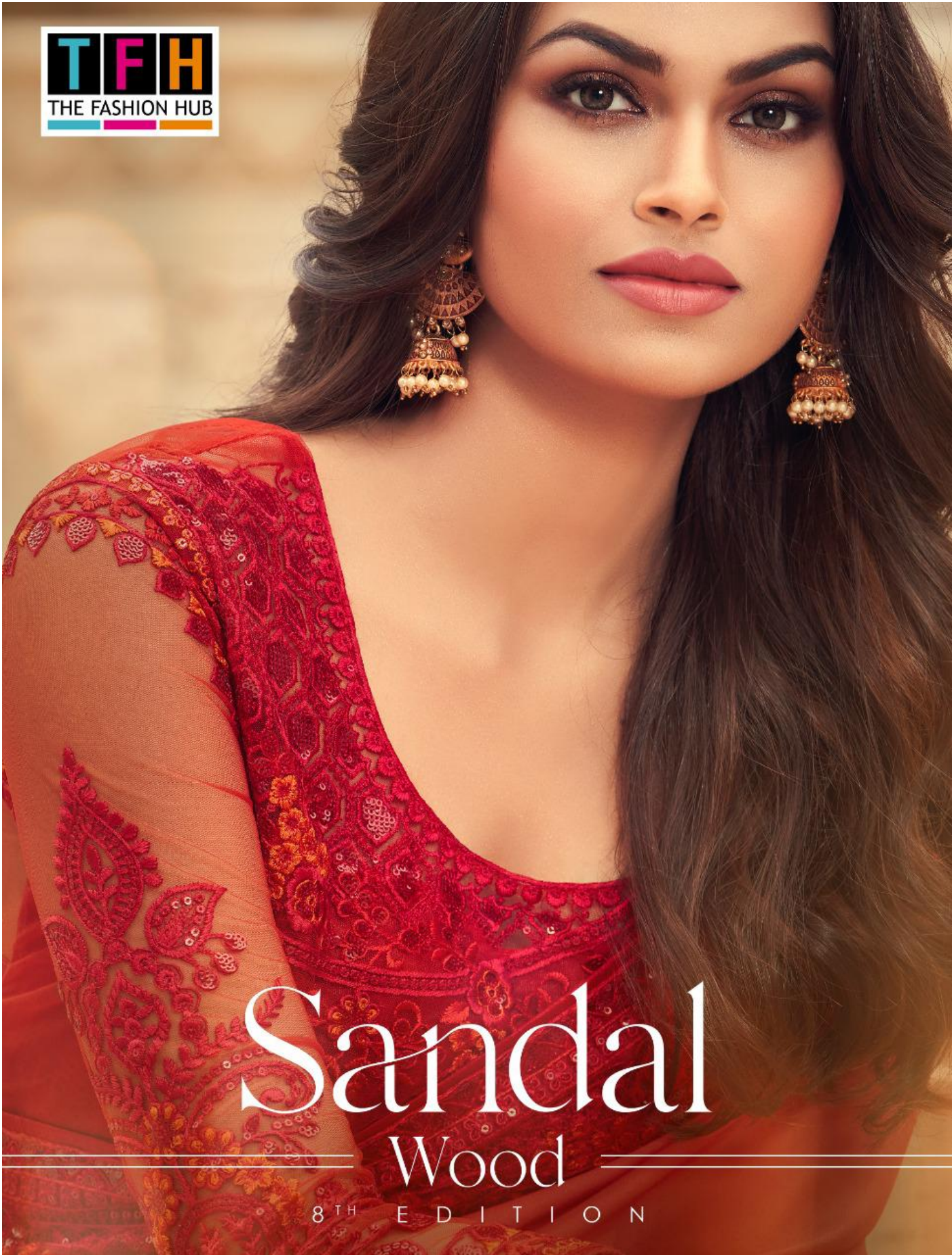
TFH
THE FASHION HUB



Produk ini adalah hasil
dari kerja keras dan semangat
dari seluruh tim kami yang
sangat berdedikasi untuk memberikan
SW-815







Sandal

Wood

8TH EDITION

TFH
THE FASHION HUB

This elegant line offers a new collage. The finest gradient always gracefully on the fabric.
It is elegant and a wardrobe statement.

SW-817







TFH
THE FASHION HUB

This sari is also available in ready and styled.
If the full sleeves blouse which are covered in a netted fashion it is perfect for any event.
SW-801



TFH
THE FASHION HUB



SW-810



TFH
THE FASHION HUB



Soft textures & vibrant color make this saree a must-have for all to have right now.
It's elegant and stylish.

SW-808





TFR
THE FASHION REVOLUTION

The Fashion Disk is firmly based in ethnic Indian fashion.
The latest offers are hand woven handspun sarees in the spirit of purity.
The attire are magical in use highly sophisticated. Fashion designers create all the original designs.

SW-811



TFH
THE FASHION HUB

The Blue Saree is a soft and stylish
The look of elegance and grace.

SW-806





TFH
THE FASHION HERO
DESIGNER
This saree shows what saree is all about and elegant.
There is something about it.
It's chic and sophisticated.
SW-803







TFH
THE FASHION HUB

A shining collection is showcased here.
The soft and delicate patterns are fused amidst a colorful and unique design.
The attire is elegant.

TFH
THE FASHION HERO



This elegant, radiant saree is both sexy & chic.
It has a wide, netting and transparent sleeves.
SW-805





TFH
THE FASHION HUB

This beautiful cool grey saree has subtle sleeves and intricate motifs on it.
It is stylish and chic.

SW 812



TFH
THE FASHION HOUSE

An elegant, timeless, colored saree with a heavy lace. This ensemble is stupendous.
It is perfect for all occasions.

SW-807





SANDALWOOD-8TH EDITION

Catalog Name	Design No.	RATE (Rs.)	Fabric Details
SANDAL WOOD-8	SW-801	1530/-	KIAARA SILK
SANDAL WOOD-8	SW-802	1605/-	BURBERRY SILK
SANDAL WOOD-8	SW-803	1470/-	SUNLIGHT SILK
SANDAL WOOD-8	SW-804	1660/-	BURBERRY SILK
SANDAL WOOD-8	SW-805	1530/-	ORGANIC SILK
SANDAL WOOD-8	SW-806	1575/-	BURBERRY SILK
SANDAL WOOD-8	SW-807	1660/-	KASAB GEORGETTE
SANDAL WOOD-8	SW-808	1575/-	BURBERRY SILK
SANDAL WOOD-8	SW-809	1605/-	KASAB GEORGETTE
SANDAL WOOD-8	SW-810	1660/-	BURBERRY SILK
SANDAL WOOD-8	SW-811	1660/-	MAJESTIC PATTERN SILK
SANDAL WOOD-8	SW-812	1680/-	MAJESTIC PATTERN SILK
SANDAL WOOD-8	SW-813	1605/-	NYRAA SILK
SANDAL WOOD-8	SW-814	1660/-	MAJESTIC PATTERN SILK
SANDAL WOOD-8	SW-815	1530/-	NYRAA SILK
SANDAL WOOD-8	SW-816	1530/-	ORACLE SILK
SANDAL WOOD-8	SW-817	1575/-	ORACLE SILK
SANDAL WOOD-8	SW-818	1605/-	BURBERRY SILK
TOTAL	18 pcs.	28715/-	
AVERAGE		1595.27/-	

NOTE:- 5% GST APPLICABLE.

Sandal Wood



SW-801



SW-802



SW-803



SW-804



SW-805



SW-806



SW-807



SW-808



SW-809



SW-810



SW-811



SW-812



SW-813



SW-814



SW-815



SW-816



SW-817



SW-818