



SHRUTI TEXTILE
ESSENCE OF ELEGANCE

शुभकामनाएं



SHRUTI TEXTILE
ESSENCE OF ELEGANCE

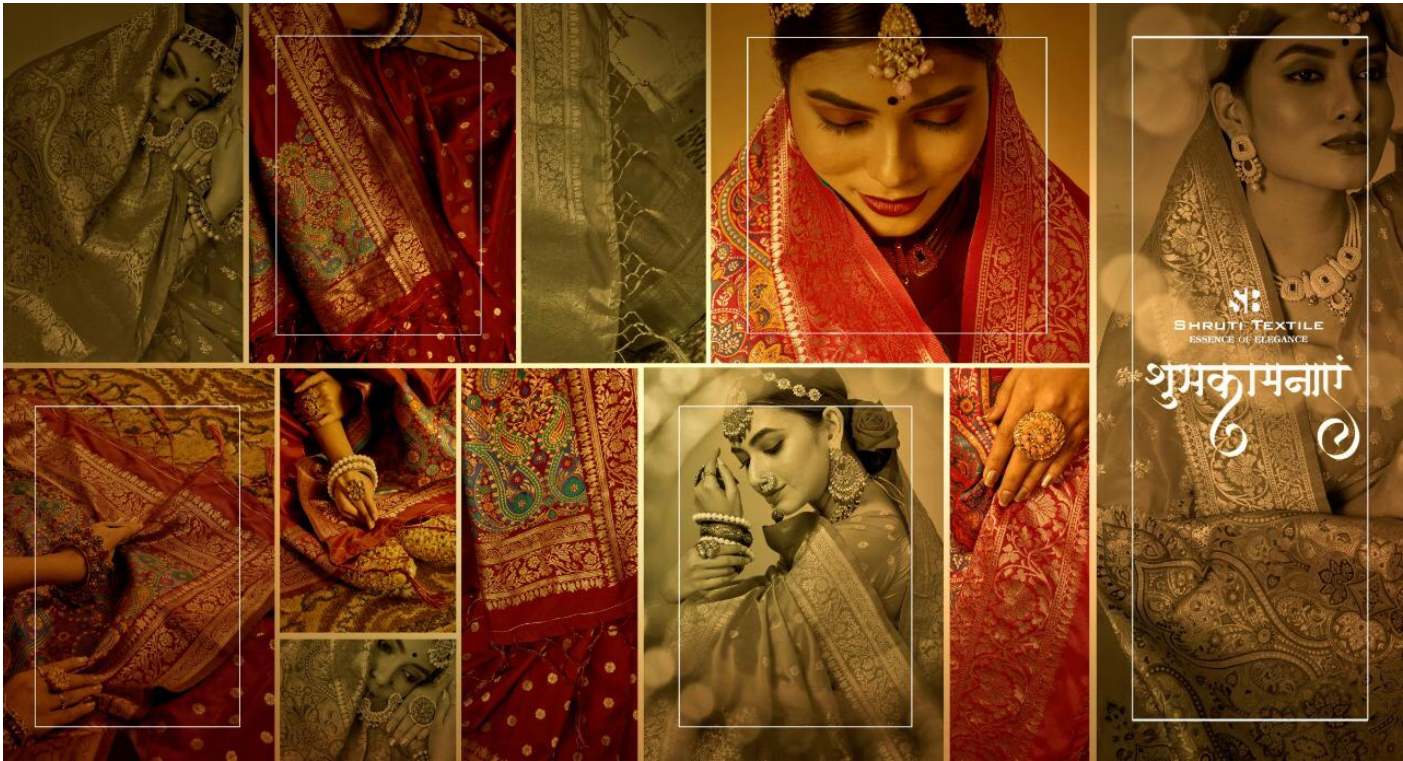
शुभकामनाएं

Aileen Allure



AILEEN ALLURE PRESENTS THE AILEEN ALLURE COLLECTION. THE AILEEN ALLURE COLLECTION IS A COLLECTION OF SAREES, BANGLES, NECKLACES, EARRINGS, AND RINGS. THE AILEEN ALLURE COLLECTION IS A COLLECTION OF SAREES, BANGLES, NECKLACES, EARRINGS, AND RINGS. THE AILEEN ALLURE COLLECTION IS A COLLECTION OF SAREES, BANGLES, NECKLACES, EARRINGS, AND RINGS.

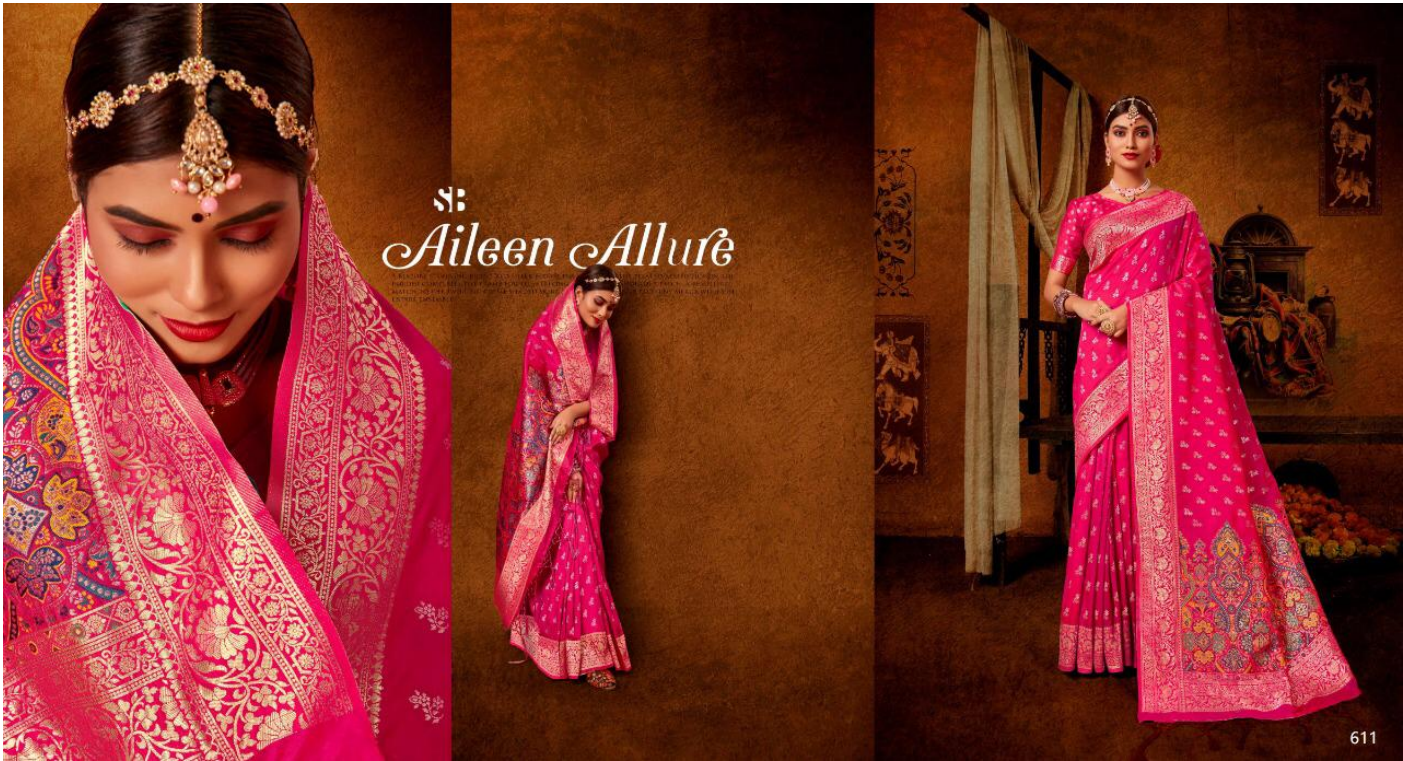




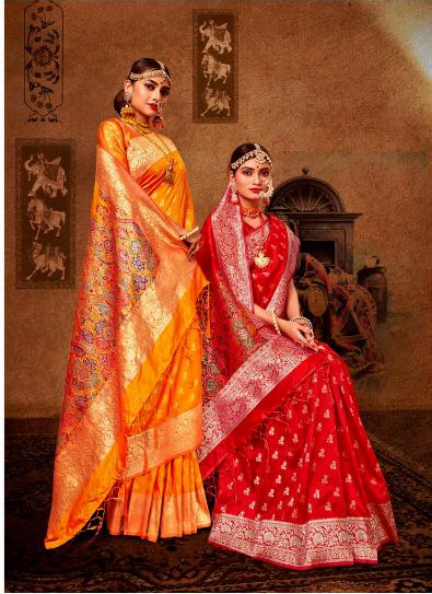
SHRUTI TEXTILE
ESSENCE OF ELEGANCE

शुभकामनाएं





S:
Aileen Allure

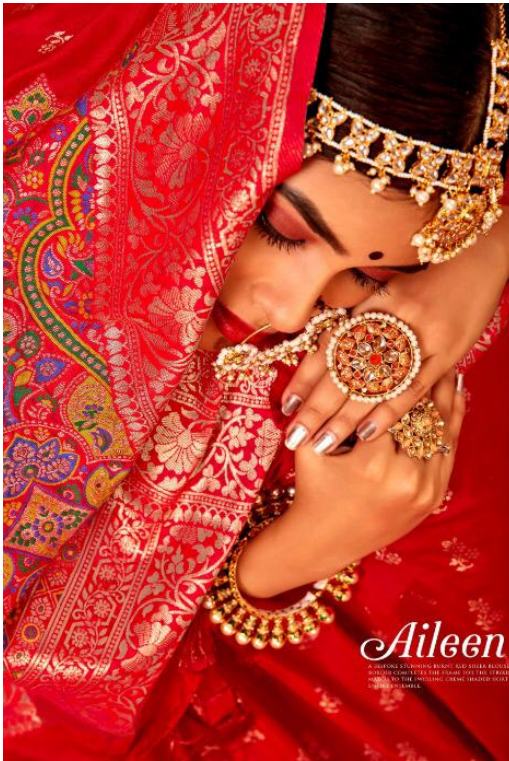


THIS SYMPHONY OF BRIGHT CYNA PRESENTED IN AN INNOVATIVE WAY MAKES A WEARER LOOK LIKE A PRINCESS. THE CLASSIC SILK GREENISH BLUE BLOUSE WORKS IN PERFECT TANDEM WITH THE GRACEFUL SAREE, MAKING THEM AN IDEAL WEAR FOR A SEMI-FORMAL OCCASION.



SB





S: *Aileen Allure*

A WOMAN'S DRESSING BECOMES HER SECOND SKIN AS A DESIGNER'S FINE DETAILED AESTHETICS ON THE FINEST QUALITY FABRIC COME TO LIFE THROUGH THE COLORFUL AND SHINY EMBROIDERY. INSPIRED BY THE TRADITIONAL CRAFTS OF THE EAST, ORANGE PATTERNS MERGE WITH THE MODERNITY OF TODAY.





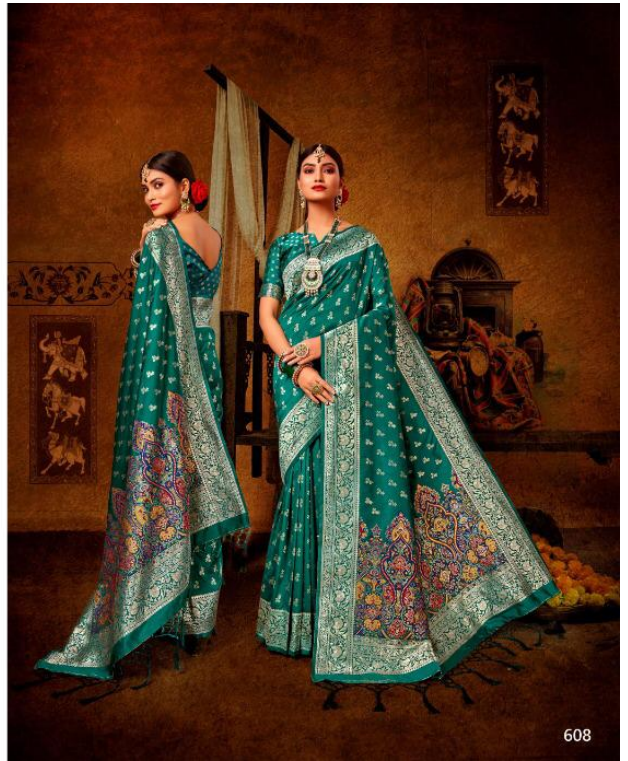




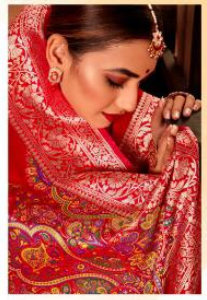
SB



Amaris

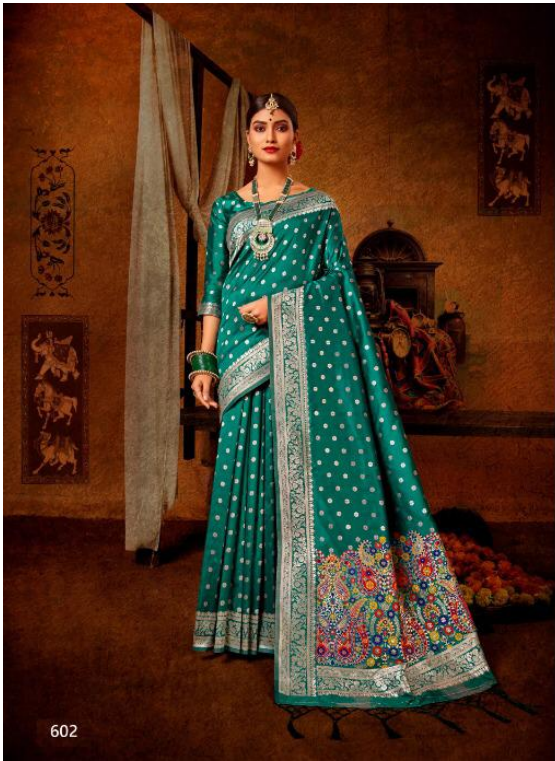


S:

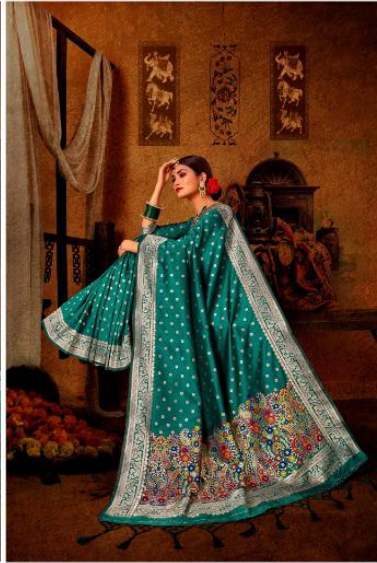
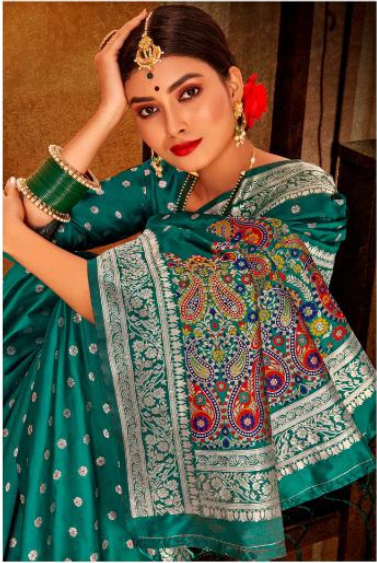


AN EXCELLENT FUSION OF CLASSIC AND CONTEMPORARY THE PEPPERBERRY
LOOKING IN THE CONTEMPORARY ENHANCES THE STYLE QUOTIENT OF THE
WEARER. MAKING HER A FASHION ICON. THE BOUTIQUE, FITTING,
CHARMANT WITH ELEGANT FORMAL EMBROIDERY GIVES A TOUCH OF GENTLE
RADIANCE WHILE THE SLEEVES GIVES IT AN EDDY LOOK.



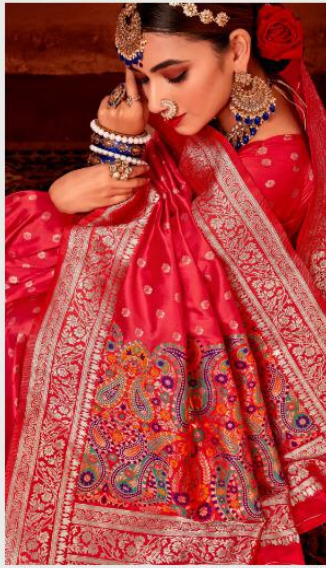


602



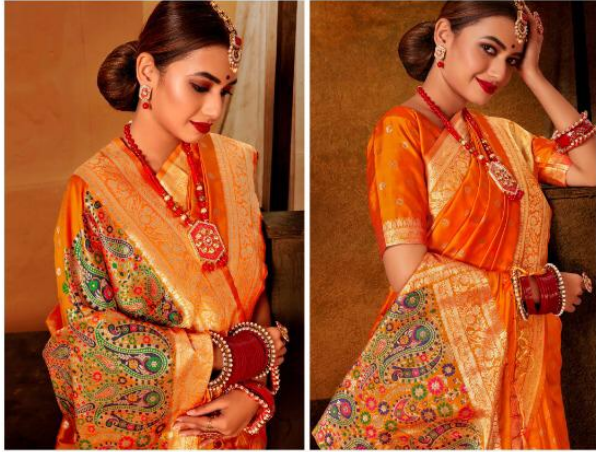


601



RAISING THE BAR OF STYLE IS THE BLOSSOMING OF THE ROSE PINK CHEMISE. THE ALLURING WORK AT THE NECKLINE SETS IT APART, STIRRING UP AN EXCITEMENT AND HIGHLY ENTICING THE SUBTLE SKIRT IN A UNIQUE FASHION. TRULY ENTICING.

SB



KUDRANKING, WAGBATH AND LORNBARK IS THE SACRIFICING, REAP OF FISH AND VEGET. THE
CONTRAST TO WAGBATH IS A GARDEN PLANT IN THE BLOWING, ARE GIVING IT A CLASSIC STYLE
AND GRACE. THE CUT-OUT AT THE SLEEVES AND NECK PROMISES TO BE A THUNDERSTRIKE.



Chiara



KADAMBERG, WAHITH AND LUTHERS IS THE DANCING, RENDU OF FEEL AND STYLE THE
CONTEMPORARY DESIGNER SEA BLENDING PLAY TO THE FLOWING SKILL CLOTHING A CLASSIC STYLE
AND LUNA'S BEAUTY OF THE MIND AND MIND PROMISE TO BE A TRINITY.





601



602



603



607



608



609



604



605



606



610



611



612



SHUBHKAMNAYE DESIGNWISE RATE

Sr. No	PROD. D.NO	CATALOG D.NO.	RATE (Rs)
1	SO-110	601	₹ 995
2	SO-110	602	₹ 995
3	SO-110	603	₹ 995
4	SO-110	604	₹ 995
5	SO-110	605	₹ 995
6	SO-110	606	₹ 995
7	SO-113	607	₹ 995
8	SO-113	608	₹ 995
9	SO-113	609	₹ 995
10	SO-113	610	₹ 995
11	SO-113	611	₹ 995
12	SO-113	612	₹ 995