











The logo for 'Riya Designer' features a stylized, multi-colored 'R' icon to the left of the brand name 'Riya' in a blue, cursive font, with the word 'DESIGNER' in a smaller, black, sans-serif font underneath.

Riya
DESIGNER



D.NO.6001



A woman with long brown hair and glasses is standing in a garden. She is wearing a dark green long-sleeved top with a colorful floral embroidery on the chest, blue jeans, and light pink high-heeled shoes. The background features a white brick wall, a large green plant with purple flowers, and a stone planter with various colorful flowers.

Riya
DESIGNER

D.NO.6003



D.NO.6005



Riya
DESIGNER

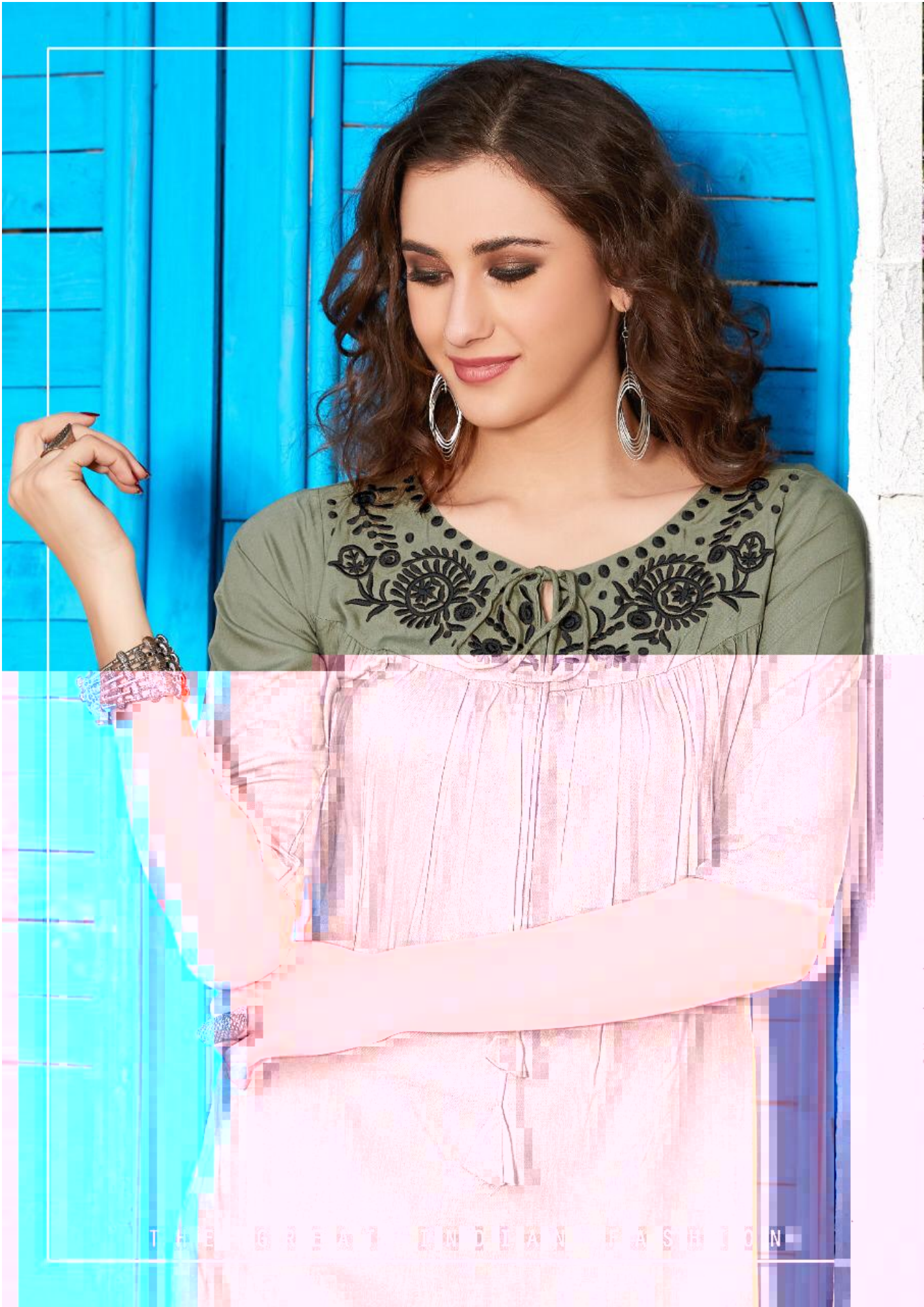
D.NO.6006

THE NEW LOOK DESIGN FASHION



THE NEW COLOR LIKE THIS





THE GREAT INDIAN FASHION

