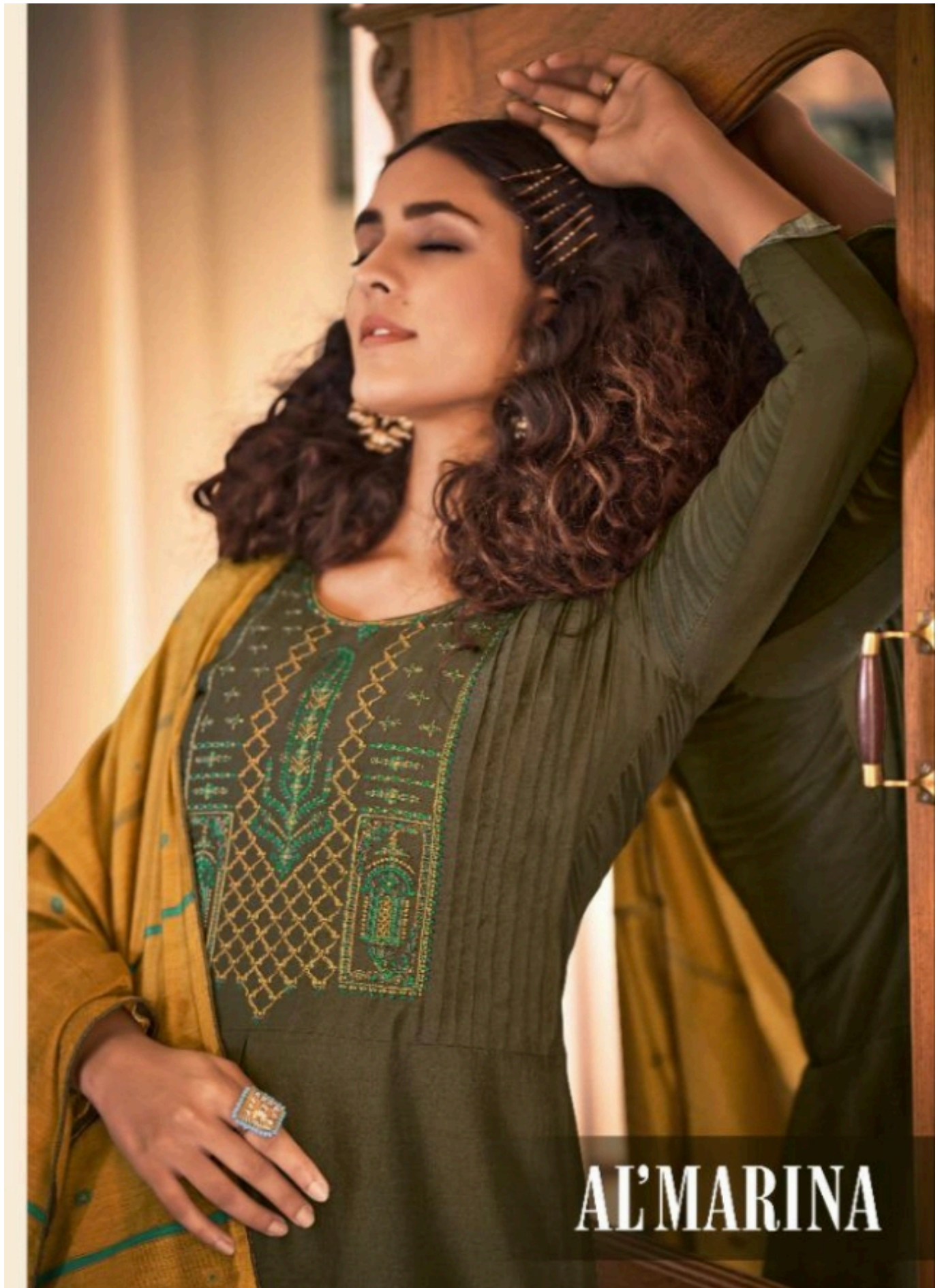


AL'MARINA



AL'MARINA

TOP:- SOFT SILK COTTON WITH SELF EMBROIDERY
DUPATTA:- SOFT HANDLOOM JEQUARD DUPTTA WITH
FOUR SIDE LACE & TUSLES
BOTTOM:- COTTON JAM (APROX:-3.00)


NISHANT
FASHION
*complimentary copy not for sale.



ALMARINA



BE FABULOUS

DESIGNED WITH
THE LATEST DESIGN
TRENDS IN MIND,
GET GOING WITH
THIS FABULOUS
COLLECTION FOR
DESIRE GET-UP.





◆ DN. 1004 ◆







◆ DN. 1006 ◆



AL'MARINA



DN 1001



DN 1002



DN 1003



DN 1004



DN 1005



DN 1006



◆ DN. 1001 ◆



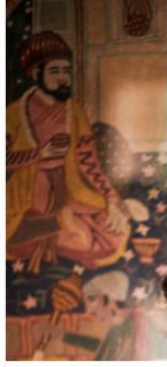




BE MESMERIZING

EVOCATIVE OF A
COMBINED
LEGACY
WITHOUT BEING
OBFUSCATED BY
IT. THIS SET IS A
PERPETUAL CLASSIC.





BE EXCEPTIONAL

ATTAIN ALL
THE COMPLIMENTS
WHILE YOU ADORN
THIS MAGNIFICENTLY
CRAFTED ROSHANI SAREE



DN
1002

