

The logo for ALISA, featuring a stylized blue 'A' shape above the brand name in a serif font.

ALISA



The logo for ALISA, featuring a stylized blue 'A' shape above the brand name in a serif font.

ALISA



Tradition excellece

*classic outfits with a twist of interesting detailing, subtle sheen,
rich texture is perfectly wrapped in panache giving style a new meaning
and refresh your wardrobe to Indian culture.*

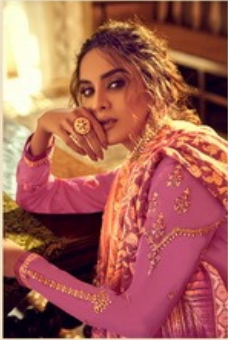


ALISA



Absolutely fuchsia

*richly of beautifying-create a trend with this soothing color and
fascinating attire to enhance your beauty.this range of ethnic wear makes sure it
spreads colours wherever the ole women goes.*





Sparkling desire

fashion is not something that dresses only, fashion is in the sky in the street, fashion has to do with ideas, the way we live, what is happening.



D.No.6203



TOP : - SATIN GEORGETTE

INNER : - DULL SANTUN

BOTTOM : - DULL SANTUN WITH WORK

DUPATTA : - CHINON SILK DIGITAL PRINT



A brand by SMF

D-3105-06-07 , 3rd Floor , R.R.T.M
SAROLI (SURAT)

SAHIR







ALISA



Heavenly collection

*our lives are coloured by the hues of rich emotions
and experiences. alisa aims to capture the best of these sentiments
with the colours of happiness.*



D.No.6204



ALISA





Exceptional beauty

glamour is most appeal she is having on her special day. she desires her appearance speaks all her emotion pure elegance with alluring local pattern on lacy fabric and add glamour to your style





D.No.6205





ALISA

D.No.6206





D.No. 6202



ALISA



SAHIR



D.No.6201



D.No.6202



D.No.6203



D.No.6204



D.No.6205



D.No.6206

The logo for ALISA, featuring a stylized blue 'A' shape above the brand name in a serif font.

ALISA





ALISA

Eplendid collection

*this stunning & glamour collection by included trendy series in vibrant
yet attractive stand out from the rest of the reveling crowd draped
in this serenly fabulous lengas*

