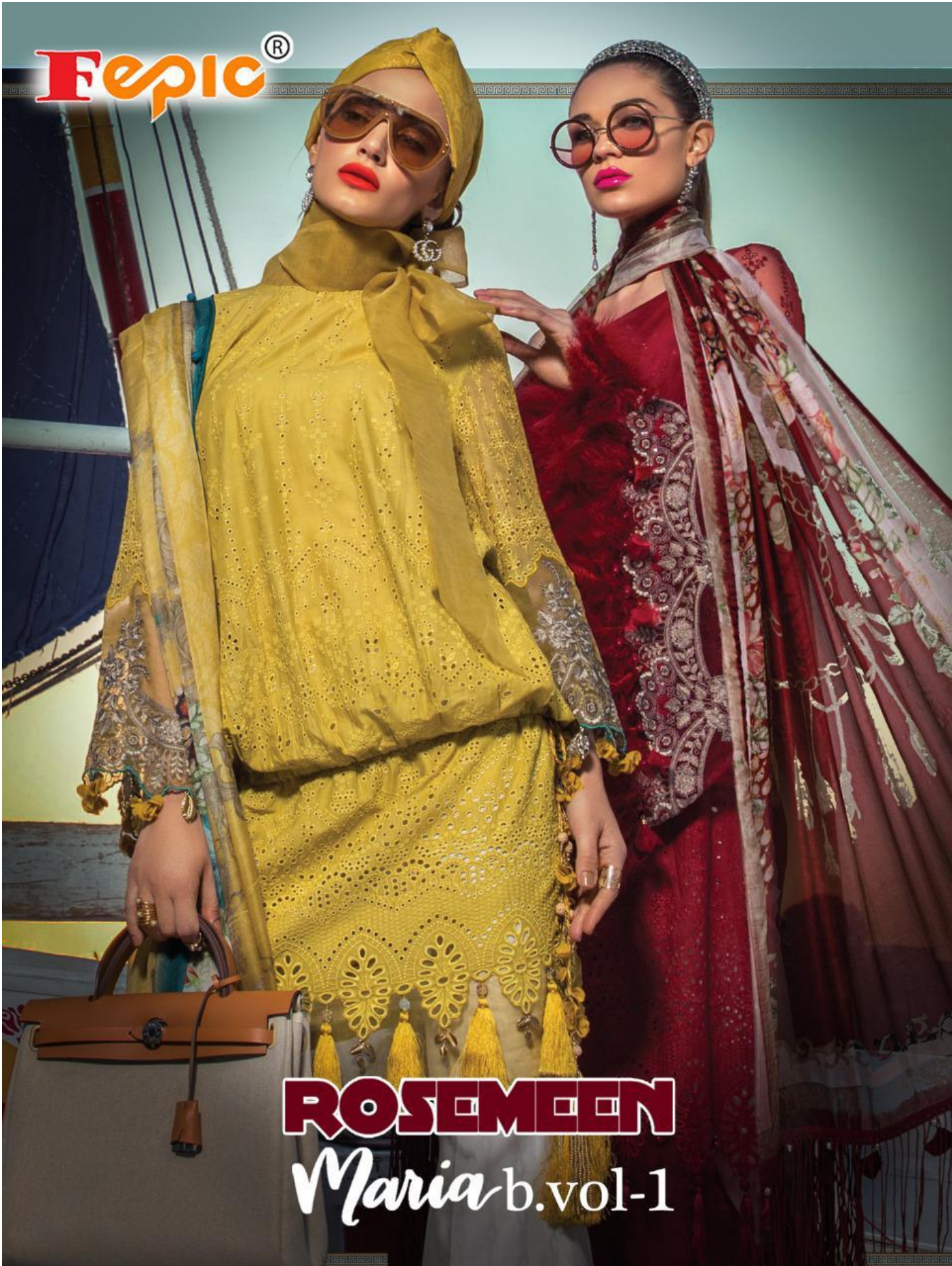
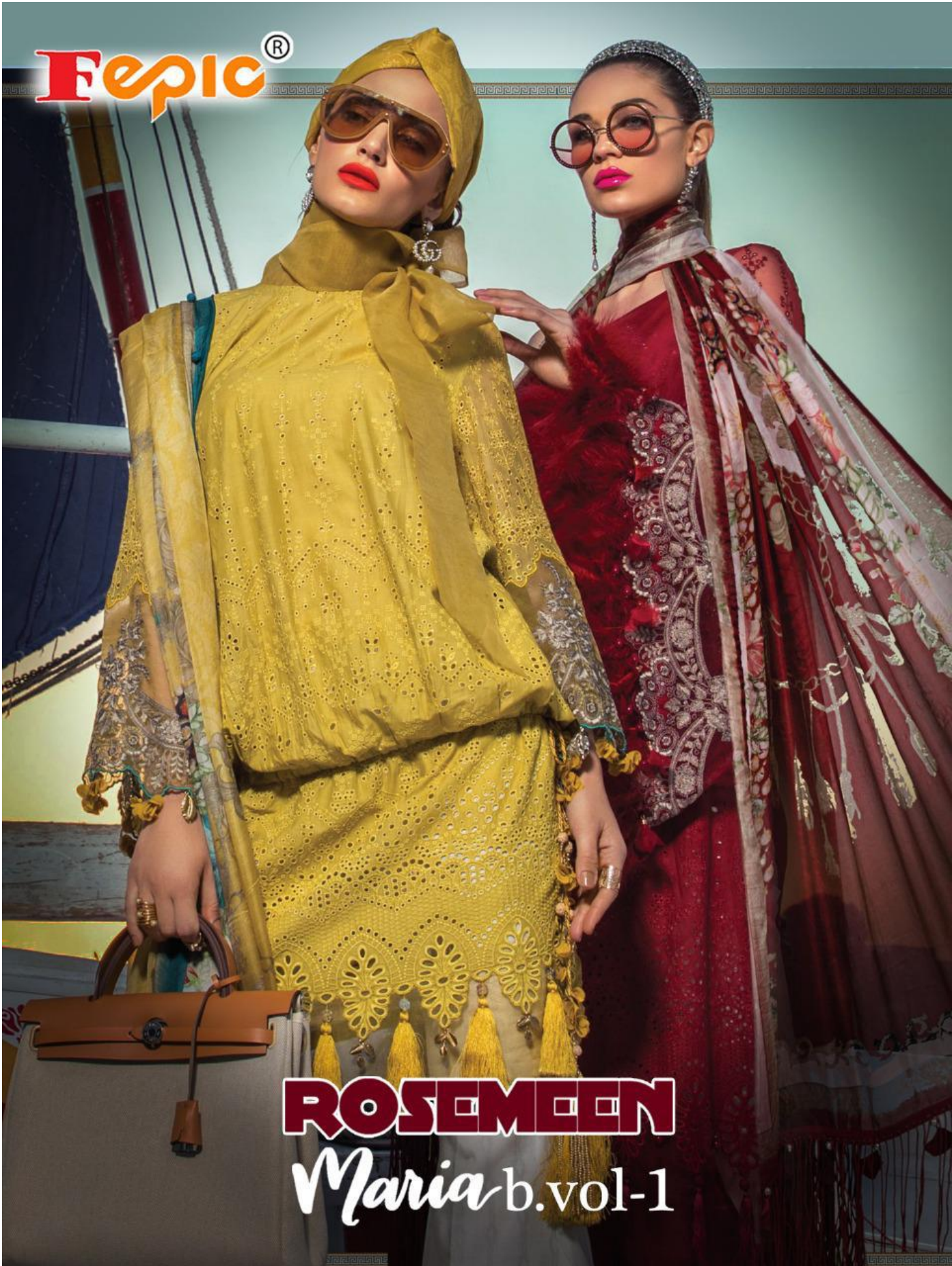


Epic®



ROSEMEEN
Maria b.vol-1

Epic®



ROSEMEEN
Maria b.vol-1



D.NO.2106



D.NO.2107





D.NO.2108

D.NO.	TOP	BOTTOM	DUPATTA	RATE
2106	PURE COTTON FRONT SHIFLY EMBROIDERED BACK PRINTED COTTON WITH EMBROIDERED BUNCHES	SEMI LAWN PRINTED	CHIFFON PRINTED	839
2107	PURE COTTON FRONT SHIFLY EMBROIDERED BACK PRINTED COTTON WITH EMBROIDERED BUNCHES	SEMI LAWN PRINTED	CHIFFON PRINTED	839
2108	PURE COTTON PRINTED WITH EMBROIDERED PATCHES	SEMI LAWN PRINTED	NET EMBROIDERED	915

AVG RATE-865

Fepic® *Maria* b.vol-1

 :_Fepic

 :Fb.com/Fepic11



D.NO.2106



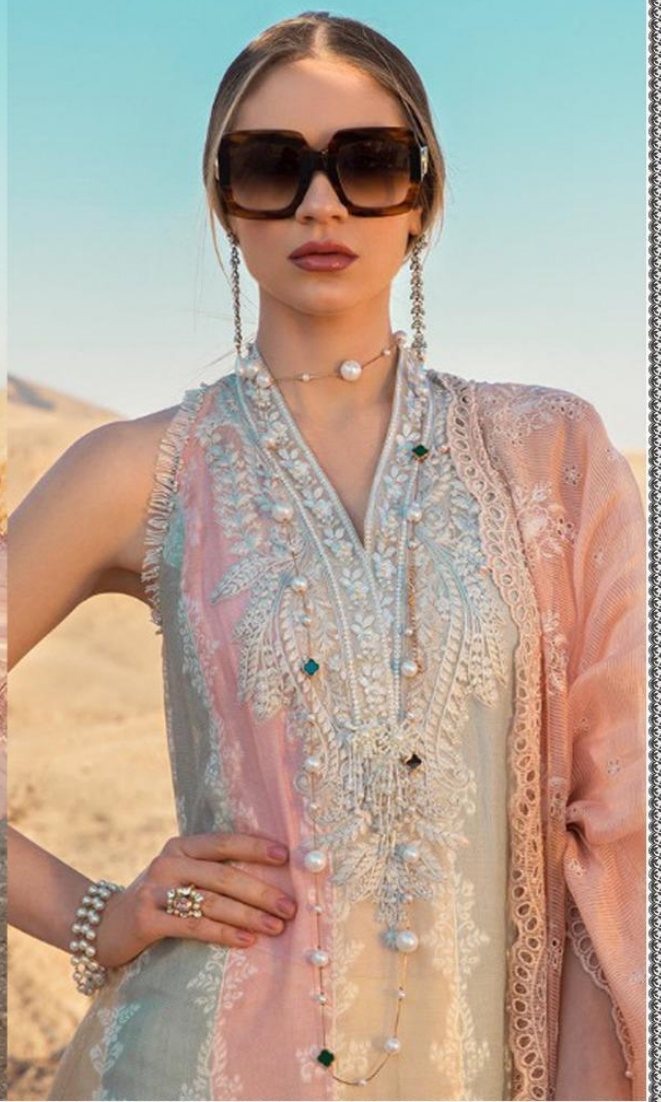
D.NO.2107



D.NO.2108



Fepic®



WASHING INSTRUCTIONS

DO NOT USE ANY TYPE OF BLEACH OR STAIN REMOVING CHEMICALS
BEFORE CUTTING / STITCHING , FABRIC SHOULD BE SOAKED IN WATER
(ALL COMPONENTS SEPARATELY) FOR 15 MINUTES
DO NOT KEEP WET FABRIC IN TWISTED FROM IN ORDER TO AVOID COPY MARKS |
WASH COLOURED AND WHITE FABRICS SEPARATELY
IRON CLOTHES AT MODERATE TEMPERATURE | DO NOT DRY FABRIC IN DIRECT SUNLIGHT
(EXTRA LACES, HANGINGS AND ACCESSORIES ARE NOT INDUDED)

Maria b.vol-1

D.NO.2108



Fepic®

WASHING INSTRUCTIONS

DO NOT USE ANY TYPE OF BLEACH OR STAIN REMOVING CHEMICALS
 BEFORE CUTTING / STITCHING , FABRIC SHOULD BE SOAKED IN WATER
 (ALL COMPONENTS SEPARATELY) FOR 15 MINUTES
 DO NOT KEEP WET FABRIC IN TWISTED FROM IN ORDER TO AVOID COPY MARKS !
 WASH COLOURED AND WHITE FABRICS SEPARATELY
 IRON CLOTHES AT MODERATE TEMPERATURE | DO NOT DRY FABRIC IN DIRECT SUNLIGHT
 (EXTRA LACES, HANGINGS AND ACCESSORIES ARE NOT INLUDED)

Maria b.vol-1

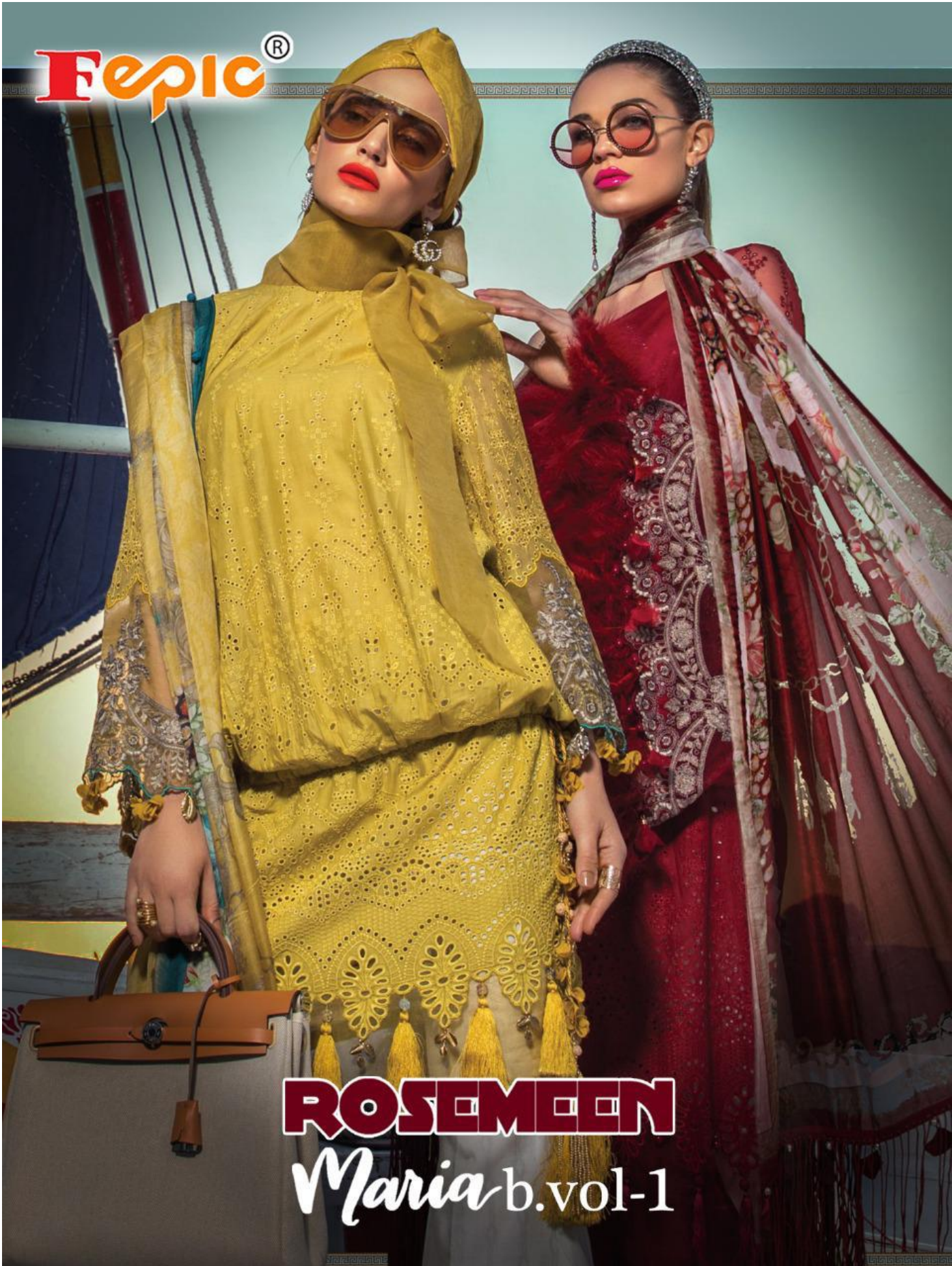


D.NO.2106

FABRIC DETAIL

TOP-PURE COTTON EMBROIDERED
 CHIKKAN WORK
 BOTTOM-PURE COTTON PRINTED
 DUPATTA-CHIFFON PRINTED

Epic®



ROSEMEEN
Maria b.vol-1



Fepic®



WASHING INSTRUCTIONS

DO NOT USE ANY TYPE OF BLEACH OR STAIN REMOVING CHEMICALS
BEFORE CUTTING / STITCHING , FABRIC SHOULD BE SOAKED IN WATER
(ALL COMPONENTS SEPARATELY) FOR 15 MINUTES
DO NOT KEEP WET FABRIC IN TWISTED FROM IN ORDER TO AVOID COPY MARKS !
WASH COLOURED AND WHITE FABRICS SEPARATELY
IRON CLOTHES AT MODERATE TEMPERATURE | DO NOT DRY FABRIC IN DIRECT SUNLIGHT
(EXTRA LACES, HANGINGS AND ACCESSORIES ARE NOT INLUDED)

Maria b.vol-1

D.NO.2107

FABRIC DETAIL

TOP-PURE COTTON EMBROIDERED
CHIKKAN WORK
BOTTOM-PURE COTTON PRINTED
DUPATTA-CHIFFON PRINTED



D.NO.2106



D.NO.2107




D.NO.2108



Fepic[®]

ROSEMEEN

Maria b.vol-1

 :_Fepic

 :Fb.com/Fepic11