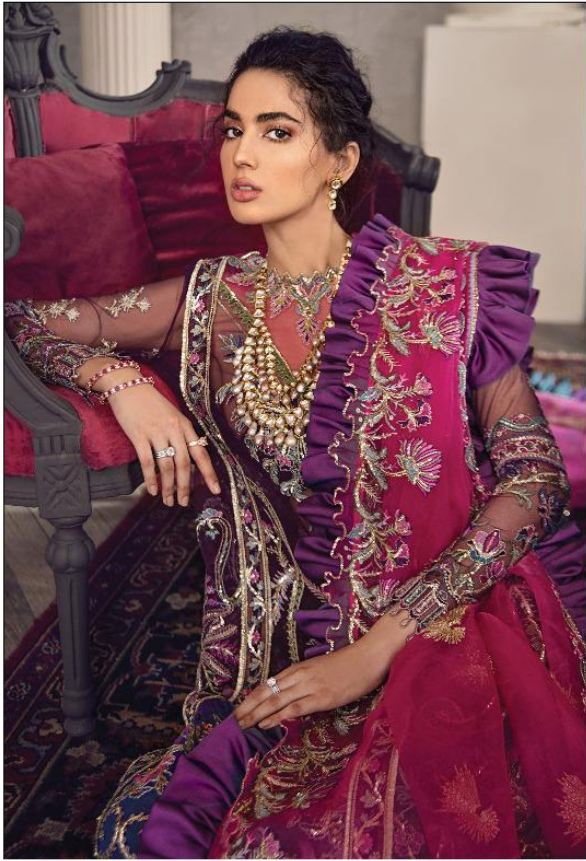




'Espoir' pays homage to festive hand mirror work incorporated with nilla, sequin, chatta patti borders and cutwork for that added touch of splendour. It can be styled in numerous silhouettes as per your choice this wedding season. It is layered over a magnificent champagne gold hand screen printed sharara and draped with organza scenic foil dupata finished with panni sheesha embroidered border.



'Espoir' pays homage to festive hand mirror work incorporated with nilla, sequin, chatta patti borders and cutwork for that added touch of splendour. It can be styled in numerous silhouettes as per your choice this wedding season. It is layered over a magnificent champagne gold hand screen printed sharara and draped with organza scenic foil dupata finished with panni sheesha embroidered border.





Jazmín VOL-12

D.No.	TOP	BOTTOM + INNER	DUPATTA
3901	NET WITH HEAVY EMBROIDERY & DIAMOND WORK	HEAVY DUL SHANTUN WITH EMBROIDERY	NET WITH HEAVY EMBROIDERY
3902	NET WITH HEAVY EMBROIDERY & DIAMOND WORK	HEAVY DUL SHANTUN WITH EMBROIDERY	NET WITH HEAVY EMBROIDERY
3903	NET WITH HEAVY EMBROIDERY & DIAMOND WORK	HEAVY DUL SHANTUN WITH EMBROIDERY	PURE BANARASI
3904	NET WITH HEAVY EMBROIDERY & DIAMOND WORK	HEAVY DUL SHANTUN WITH EMBROIDERY	NET WITH HEAVY EMBROIDERY

NOTE : Rate 1299 + GST Extra.



'Espoir' pays homage to festive hand mirror work incorporated with nilla, sequin, chatta patti borders and cutwork for that added touch of splendour. It can be styled in numerous silhouettes as per your choice this wedding season. It is layered over a magnificent champagne gold hand screen printed sharara and draped with organza scenic foil dupata finished with panni sheesha embroidered border.



D.No.3901



D.No.3902



D.No.3903



D.No.3904





