



D.NO.1060 A

**TOP - NET WITH HEAVY EMBROIDERY AND DIAMOND WORK
DUPATTA - NET WITH MOTI WORK
INNER - HEAVY SHANTUN
BOTTOM - HEAVY SHANTUN**



D.NO.1060 A

**TOP - NET WITH HEAVY EMBROIDERY AND DIAMOND WORK
DUPATTA - NET WITH MOTI WORK
INNER - HEAVY SHANTUN
BOTTOM - HEAVY SHANTUN**



D.NO.1060 J

TOP - NET WITH HEAVY EMBROIDERY AND DIAMOND WORK
DUPATTA - NET WITH EMBROIDERY
INNER - HEAVY SHANTUN
BOTTOM - HEAVY SHANTUN



D.NO.1060 A

**TOP - NET WITH HEAVY EMBROIDERY AND DIAMOND WORK
DUPATTA - NET WITH MOTI WORK
INNER - HEAVY SHANTUN
BOTTOM - HEAVY SHANTUN**



D.NO.1060 M

TOP - NET WITH HEAVY EMBROIDERY AND DIAMOND WORK
DUPATTA - NET WITH EMBROIDERY
INNER - HEAVY SHANTUN
BOTTOM - HEAVY SHANTUN



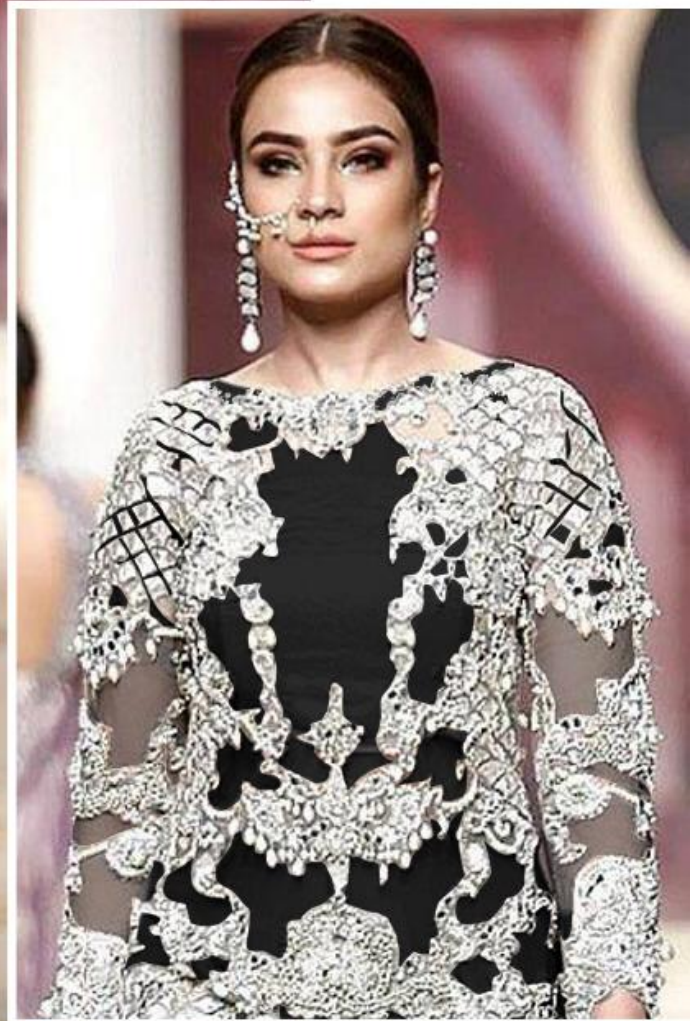
D.NO.1060 E

TOP - NET WITH HEAVY EMBROIDERY AND DIAMOND WORK
DUPATTA - NET WITH EMBROIDERY
INNER - HEAVY SHANTUN
BOTTOM - HEAVY SHANTUN



D.NO.1060 G

TOP - NET WITH HEAVY EMBROIDERY AND DIAMOND WORK
DUPATTA - NET WITH EMBROIDERY
INNER - HEAVY SHANTUN
BOTTOM - HEAVY SHANTUN



D.NO.1060 N

TOP - NET WITH HEAVY EMBROIDERY AND DIAMOND WORK
DUPATTA - NET WITH EMBROIDERY
INNER - HEAVY SHANTUN
BOTTOM - HEAVY SHANTUN



D.NO.1060 K

**TOP - NET WITH HEAVY EMBROIDERY AND DIAMOND WORK
DUPATTA - NET WITH EMBROIDERY
INNER - HEAVY SHANTUN
BOTTOM - HEAVY SHANTUN**