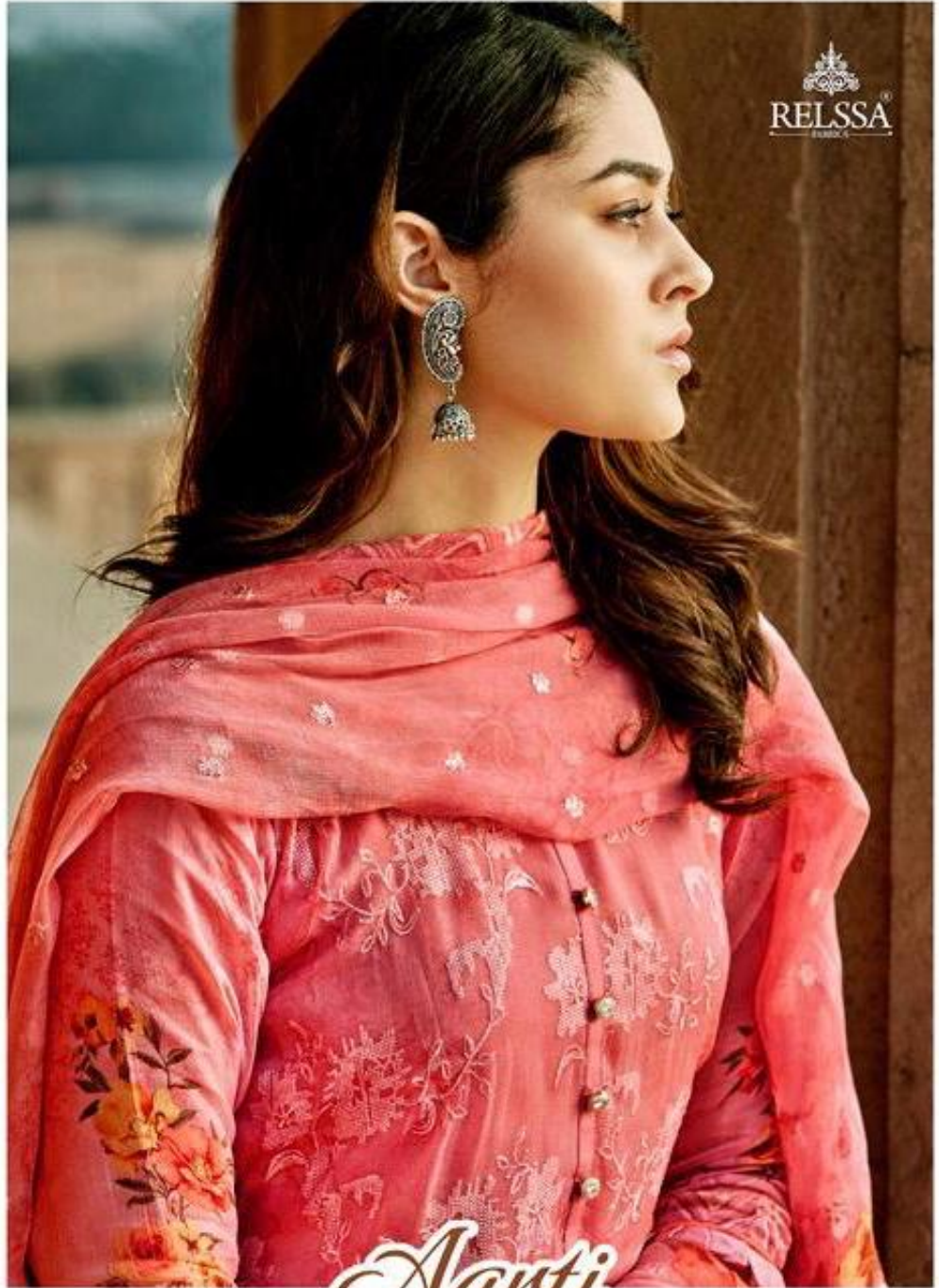


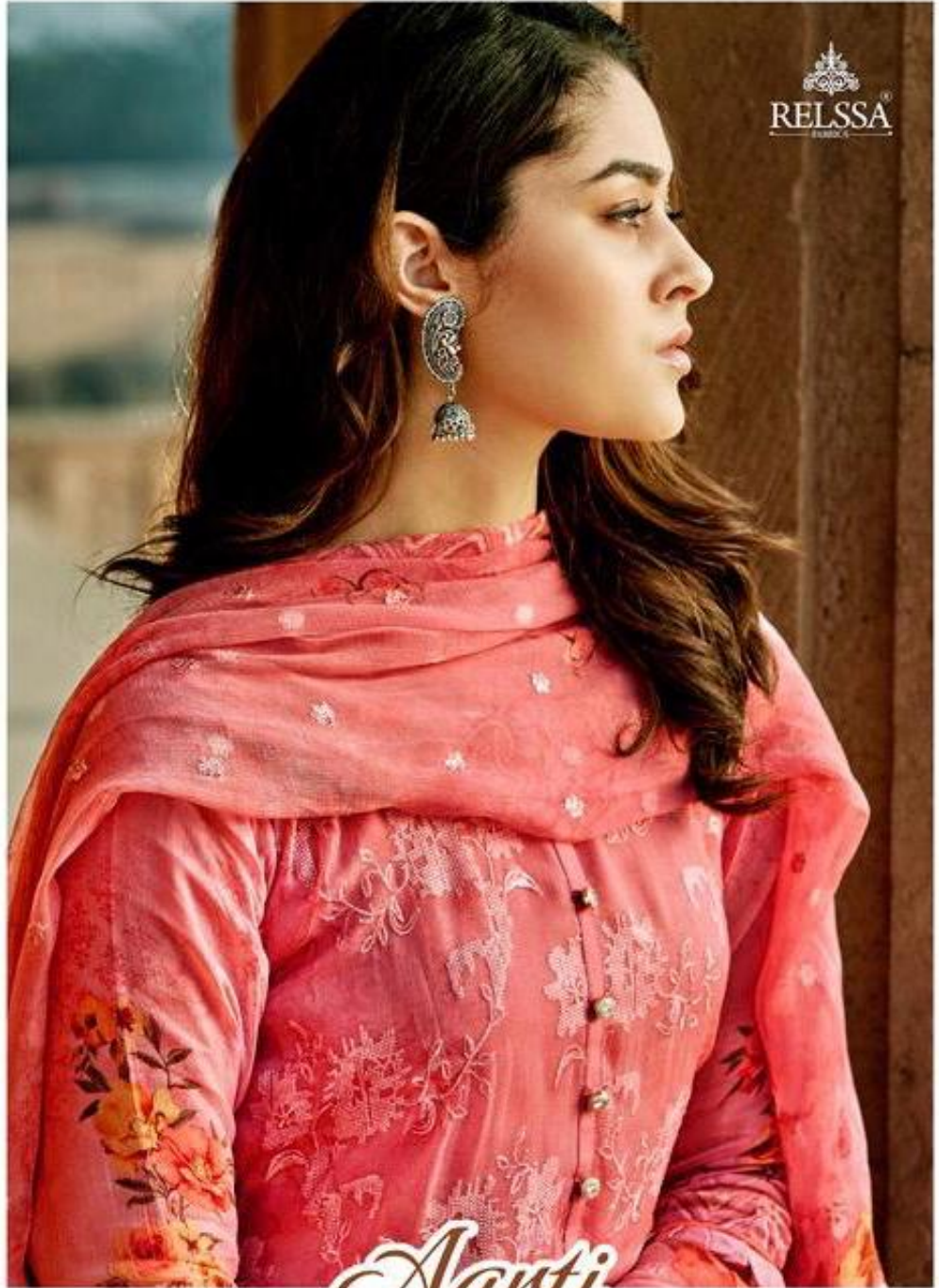
RELISSA
Fashion



Narti



RELISSA
Fashion

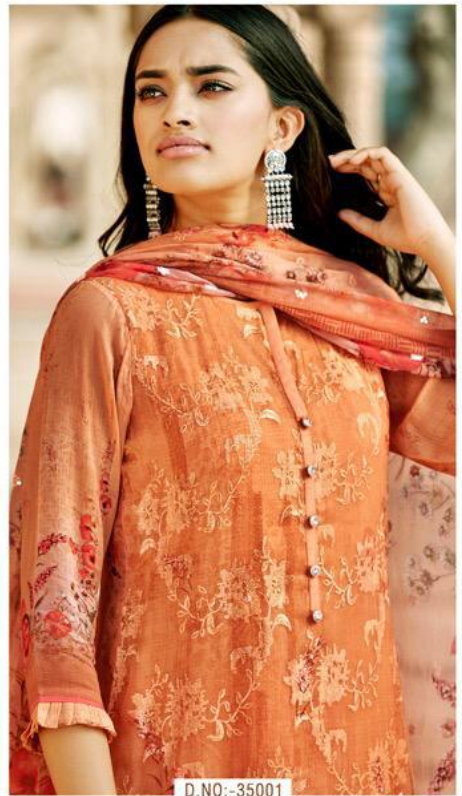


Narti





RELSA
FABRICS



D.NO:-35001





D.NO:-35002





RELISSA
FABRICS

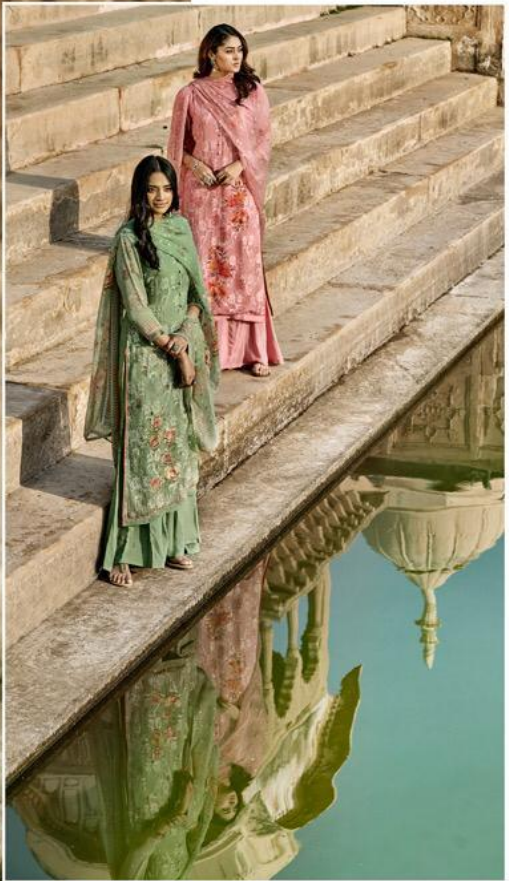


D.NO:-35005



RELISSA
BRAND

Aarti





RELSSA[®]
FABRICS

Aarti

D.NO:-35007



RELISSA[®]
FABRICS

Aarti

D.NO:-35008



RELSSA[®]
FABRICS

Aarti

D.NO:-35005

RELISSA

Aarti



D.NO.-35001



D.NO.-35002



D.NO.-35003



D.NO.-35004



D.NO.-35005



D.NO.-35006



D.NO.-35007



D.NO.-35008



RELISSA
FABRIQUE



D.NO:-35007

A woman with long, wavy brown hair is standing in front of an ornate, light-colored stone temple structure. She is wearing a long, flowing yellow kurta with a vibrant floral pattern in shades of red, pink, and brown. A matching yellow shawl with a similar floral pattern is draped over her shoulders. She is also wearing yellow pants and silver sandals. The background shows the intricate carvings and pillars of the temple under a clear blue sky.

RELISSA[®]
FABRICS

Aarti

D.NO:-35004






RELSSA[®]
FABRICS

Aarti

D.NO:-35002



RELISSA[®]
FABRICS

Aarti

D.NO:-35003

A woman with long dark hair is standing in a traditional Indian architectural setting, possibly a temple or palace. She is wearing a green saree with a red and orange floral pattern. The background features ornate stone pillars and arches. The lighting is warm, suggesting a sunset or sunrise.

RELISSA[®]
FABRICS

Aarti

D.NO:-35006





D.NO:-35001

RELISSA



D.NO:-35002



D.NO:-35003

RELISSA



D.NO:-35004



D.NO:-35005



D.NO:-35006

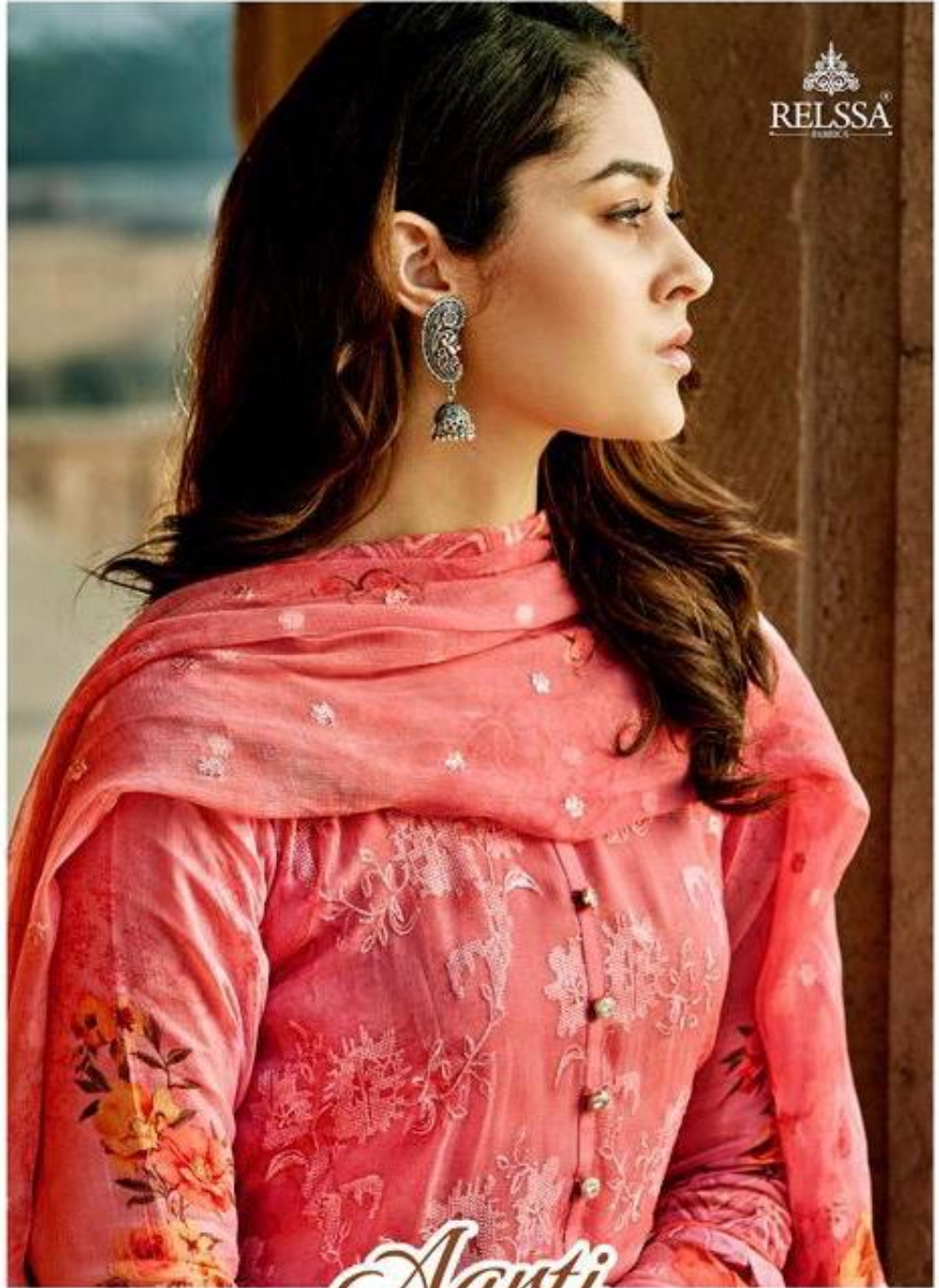


D.NO:-35007



D.NO:-35008

RELISSA
Fashion



Narti



Ref. No. :

Date :

AARTI

RATE:1895/-

TOP

VISSCOSE GEORGET

EMBROIDERY WORK WITH DIGITAL PRINT

DUPATTA

PURE CHIFFONE EMBROIDERY WORK WITH DIGITAL PRINT

BOTTOM INNER

SANTOON

DESIGN

PRODUCT NAME

HSN CODE 5407

D.NO:-35001 TO 35008

AARTI

TOTAL SUITS

TOTAL AMOUNT

AVG.RATE

08

15160 /-

1895/-

BY:-RELSA FABRICS (SAJJAN)



RELISSA[®]
FABRICS

Aarti

D.NO:-35001









D.NO:-35005

