



Belliza[®]
Designer Studio

VOGUE

EMBRACE THE JOURNEY



Belliza[®]
Designer Studio

VOGUE

EMBRACE THE JOURNEY

A woman with long dark hair is shown in profile, looking towards the right. She is wearing a yellow long-sleeved top with intricate gold and blue floral embroidery. A vibrant pink shawl with large gold floral patterns is draped over her shoulders. She is adorned with large, ornate gold earrings featuring a crescent moon and colorful stones, and a matching gold ring on her finger. The background is a soft, out-of-focus blue and white gradient.

BelliZa[®]
Designer Studio

BANARASI

VOL-2

AMAZING



223-009



GLAMOUR



223-002



ROYAL TOUCH



223-007



Belliza®
Designer Studio



STYLE

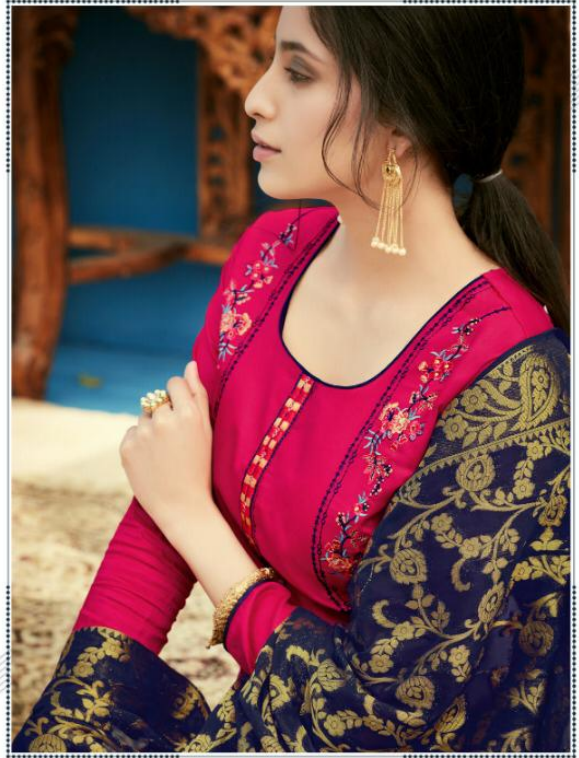


223-003

BelliZa®
Designer Studio



MOMENTS



223-006

Belliza[®]
Designer Studio

Ingenere typeface made for fashion, designed to seduce.
Musika, rasta! typography.



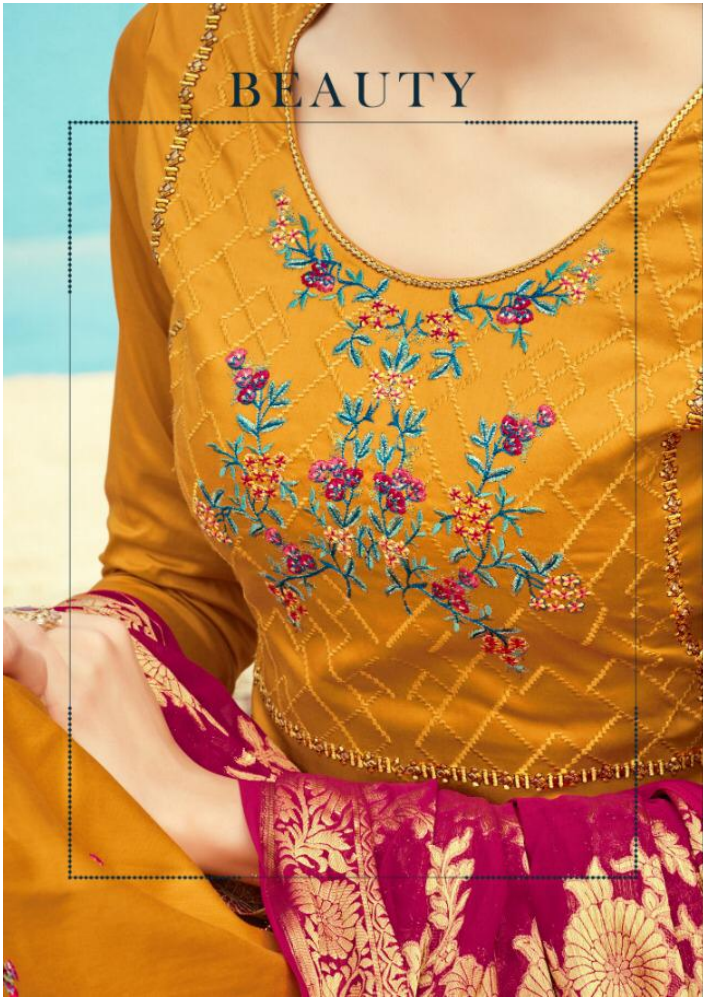
COLOUR TOUCH



223-008



Belliza
Designer Studio



BEAUTY



Belliza
Designer Studio

223-004



BelliZa®
Designer Studio

EXCELLENT



223-010



223-001



223-002



223-003



223-004



223-005



223-006



223-007



223-008



223-009



223-010

Belliza
Designer Studio

BANARASI

BelliZa
Designer Studio



STYLE MANTRA



223-001



Belliza[®]
Designer Studio

VOGUE

EMBRACE THE JOURNEY

Belliza®
Designer Studio



FASHIONISTA



223-005