

The logo for 'Fepic' is located in the top right corner. It features the word 'Fepic' in a stylized, bold font. The 'F' is red, and the 'epic' is orange. A registered trademark symbol (®) is positioned to the upper right of the 'c'.The word 'ROSEMEEN' is written in a large, bold, purple font with a white outline. It is centered at the bottom of the image, above the 'Cross Culture' text.The words 'Cross Culture' are written in a white, outlined font. They are positioned below 'ROSEMEEN' and are flanked by decorative horizontal lines on both sides.





Fepic®

**ROSEMEEN**  
Cross Culture





**ROSEMEEN**  
Cross Culture  
D.NO.71002



QR



Fepic®

**ROSEMEEN**  
Cross Culture





**ROSEMEEN**  
Cross Culture  
D.NO.71003



QR



D.NO.71001



D.NO.71002



D.NO.71003



D.NO.71004



D.NO.71005



D.NO.71006



**Fepic**® **ROSEMEEN**  
Cross Culture

Instagram: [@\\_Fepic](#)  
Facebook: [Fb.com/Fepic11](#)





**Epic**<sup>®</sup>

**ROSEMEEN**  
Cross Culture

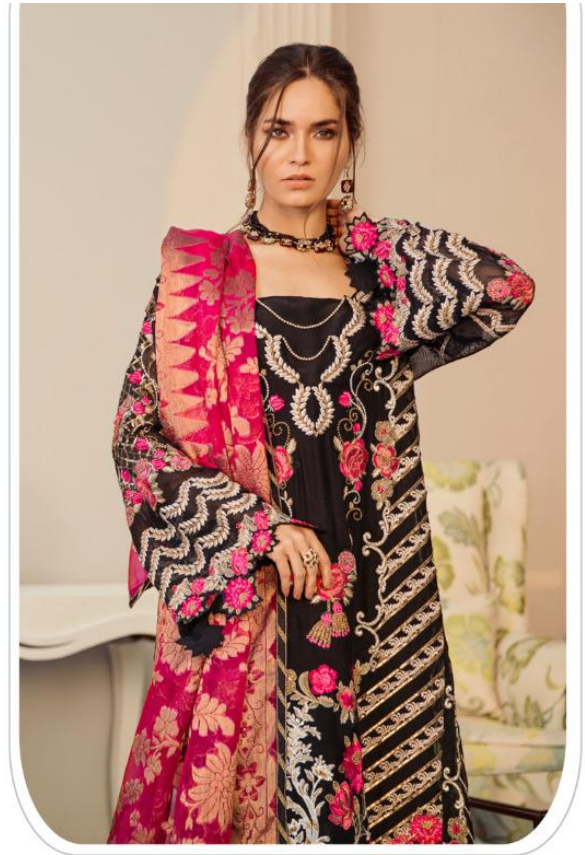
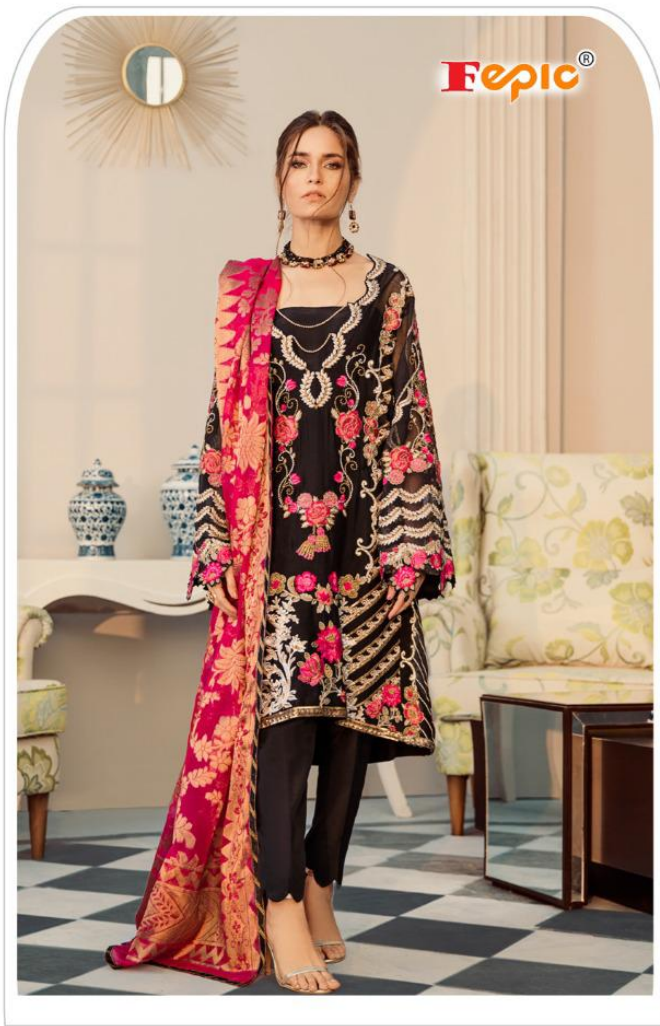


**ROSEMEEN**  
Cross Culture  
D.NO.71006



QR





**ROSEMEEN**  
Cross Culture  
D.NO.71004



QR





**ROSEMEEN**  
Cross Culture  
D.NO.71005



QR





**ROSEMEEN**  
Cross Culture  
D.NO.71001



QR