







RAMAIYA
ROYAL WORLD OF CLOTHING

CATALOG NAME : **Malhar**

PIECES : **8**

	FABRICS DETAILS (Material Only)
TOP	JAM SILK WITH SWAROVSKI DIAMOND WITH EMBROIDERY WORK
BOTTOM	COTTON
DUPATTA	COTTON SILK WITH SWAROVSKI DIAMOND AND FANCY BORDER



10125



10121



10122



10125



10126



10123



10124



10127



10128

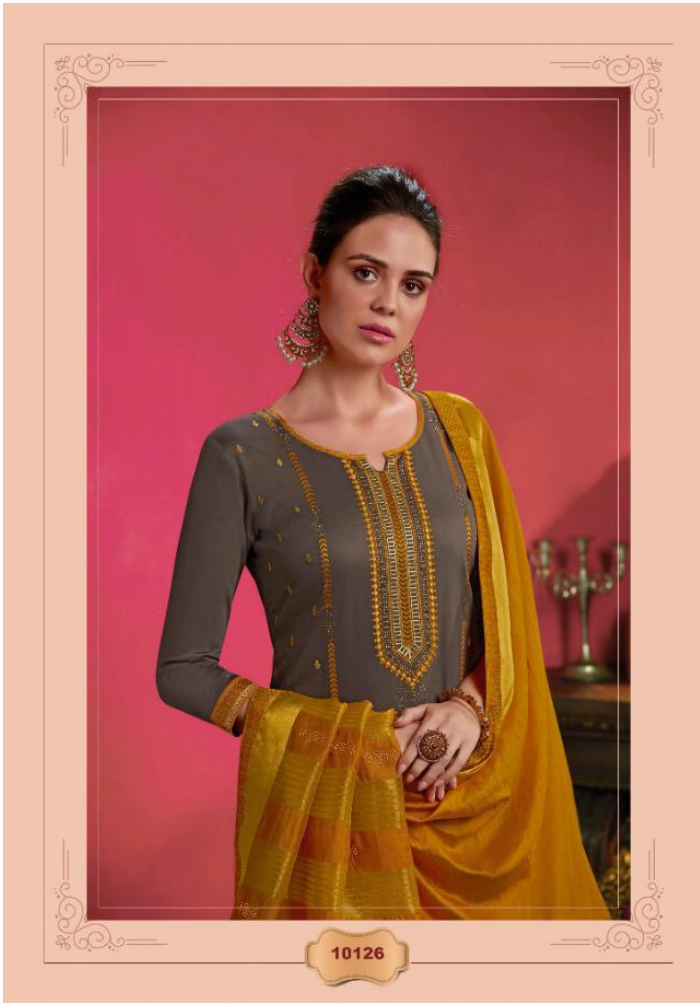


10127



10123









10128












EAT

TOP: JAM SILK WITH SWAROVSKI
 DIMOND WITH EMBROIDERY WORK
 DUPATTA: COTTON SILK WITH
 SWAROVSKI DIMOND AND
 FANCY BORDER.
 BOTTOM: COTTON


 RAMAIYA
 ROYAL WORLD OF CLOTHING
 A product by

 XESSI
 MANUFACTURING PVT. LTD.

SAREE | SLITS | LEHNGA | TUNICS
 Follow us on



© 2014 Ramiya Apparel Pvt. Ltd.

