



Elegance - Designed & Delivered



MIRROR



Elegance - Designed & Delivered



MIRROR



MIRROR



D. NO	PRODUCT DETAIL
1321	Embroidery On Viscose Chiffon Slub
1323	Embroidery On Viscose Chiffon Slub
1324	Embroidery On Viscose Chiffon Slub
1325	Embroidery On Viscose Slub
1326	Embroidery On Viscose Chiffon Slub
1327	Embroidery On Viscose Chiffon Slub
1328	Embroidery On Viscose Chiffon Slub

LENGTH : 52 INCHES

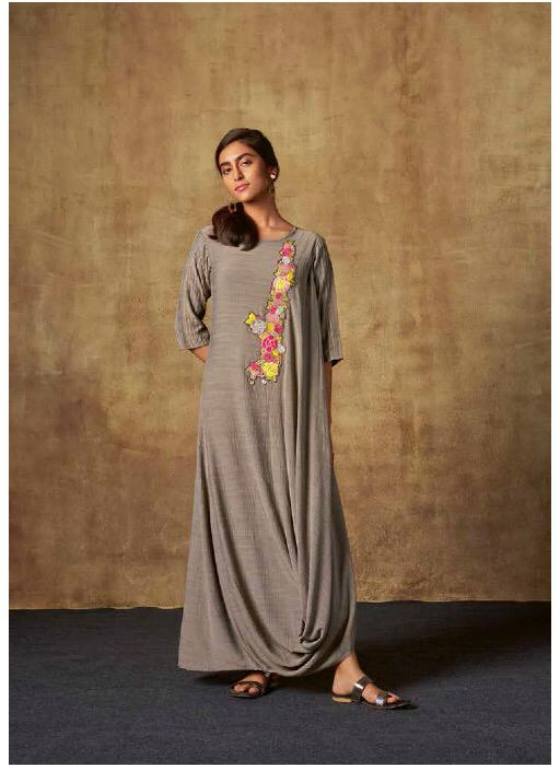
SIZES	M	L	XL	XXL	XXXL
(IN INCHES)	38	40	42	44	46



OTS 132802 132802 132802
 The flowing silhouette has a low
 neckline and is accented with gold
 and pink floral and sequin border
 detailing. The tunic is made of
 cotton and is perfect for casual
 wear to parties and "BRUNCH".



**four
 buttons**
 Elegance • Design • E-Brand

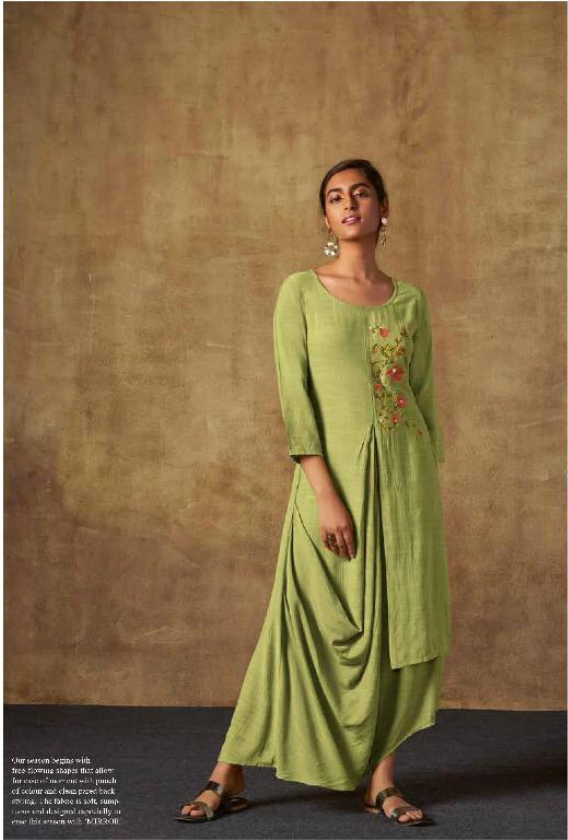


Empire: Karpal R. 1321
The dress is made of a soft, flowing fabric with a subtle texture. The floral embroidery is a vibrant mix of pink, yellow, and white, adding a touch of color and detail to the design. The dress is long-sleeved and floor-length, with a relaxed fit. The fabric is a light grey color, which complements the colorful embroidery. The dress is shown in a studio setting with a textured, brownish-gold wall and a dark blue carpet.



Two sleeve long-sleeved dress with floral embroidery. The dress is made of cotton and comes with a pleated skirt. The dress is available in two colors: Claret and Silver. The dress is available in sizes: S, M, L, XL, XXL, XXXL.







Elegance - Designed & Delivered



MIRROR



1325

four
buttons
Elegance - Design & Detail



Our casual button with free-flowing shapes that allow for ease of movement with touch of ocean and chain part of their styling. The fabric is a 3-way stretch and designed especially for women's business with 40%TCR308







four
buttons

100% Cotton | 100% Polyester

1323