

ROSEMEEN
Carnival 20

D.NO.
68003



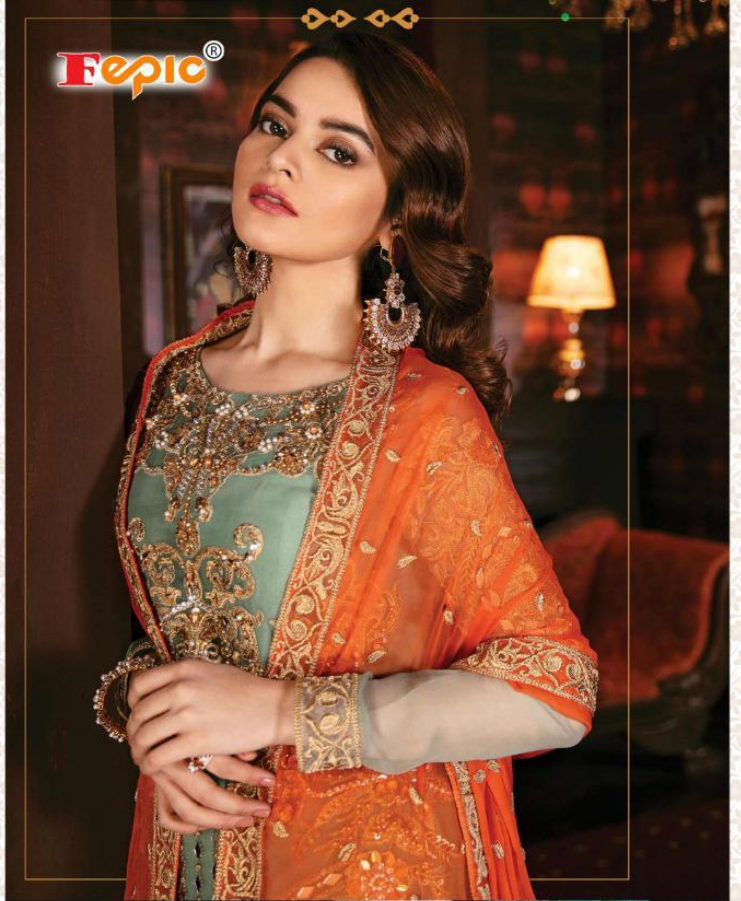
QR

WASHING INSTRUCTIONS

DO NOT USE ANY TYPE OF BLEACH OR STAIN REMOVING CHEMICALS BEFORE CUTTING / STITCHING. FABRIC SHOULD BE SOAKED IN WATER (ALL COMPONENTS SEPARATELY) FOR 15 MINUTES

DO NOT KEEP WET FABRIC IN TWISTED FORM IN ORDER TO AVOID COPY MARKS | WASH COLOURED AND WHITE FABRICS SEPARATELY

IRON CLOTHES AT MODERATE TEMPERATURE | DO NOT DRY FABRIC IN DIRECT SUNLIGHT



ROSEMEEN
Carnival 20

D.NO.
68003



QR

WASHING INSTRUCTIONS

DO NOT USE ANY TYPE OF BLEACH OR STAIN REMOVING CHEMICALS BEFORE CUTTING / STITCHING. FABRIC SHOULD BE SOAKED IN WATER (ALL COMPONENTS SEPARATELY) FOR 15 MINUTES

DO NOT KEEP WET FABRIC IN TWISTED FORM IN ORDER TO AVOID COPY MARKS | WASH COLOURED AND WHITE FABRICS SEPARATELY

IRON CLOTHES AT MODERATE TEMPERATURE | DO NOT DRY FABRIC IN DIRECT SUNLIGHT

FEPIC®

ROSEMEEN

Carnival '20





ROSEMEEN
Carnival '20

D.NO.
68004



QR

WASHING INSTRUCTIONS

DO NOT USE ANY TYPE OF BLEACH OR STAIN REMOVING CHEMICALS
BEFORE CUTTING / STITCHING. FABRIC SHOULD BE SOAKED IN WATER
(ALL COMPONENTS SEPARATELY) FOR 15 MINUTES

DO NOT KEEP WET FABRIC IN TWISTED FORM IN ORDER TO AVOID COPY MARKS |
WASH COLOURED AND WHITE FABRICS SEPARATELY

IRON CLOTHES AT MODERATE TEMPERATURE | DO NOT DRY FABRIC IN DIRECT SUNLIGHT



D.NO.68001



D.NO.68002



D.NO.68003



D.NO.68004



D.NO.68005



D.NO.68006



Fepic[®] **ROSEMEEN**
Carnival'20

:_Fepic

:Fb.com/Fepic11



ROSEMEEN
Carnival 20

D.NO.
68005



QR

WASHING INSTRUCTIONS

DO NOT USE ANY TYPE OF BLEACH OR STAIN REMOVING CHEMICALS BEFORE CUTTING / STITCHING. FABRIC SHOULD BE SOAKED IN WATER (ALL COMPONENTS SEPARATELY) FOR 15 MINUTES

DO NOT KEEP WET FABRIC IN TWISTED FROM IN ORDER TO AVOID COPY MARKS | WASH COLOURED AND WHITE FABRICS SEPARATELY

IRON CLOTHES AT MODERATE TEMPERATURE | DO NOT DRY FABRIC IN DIRECT SUNLIGHT



ROSEMEEN
Carnival '20

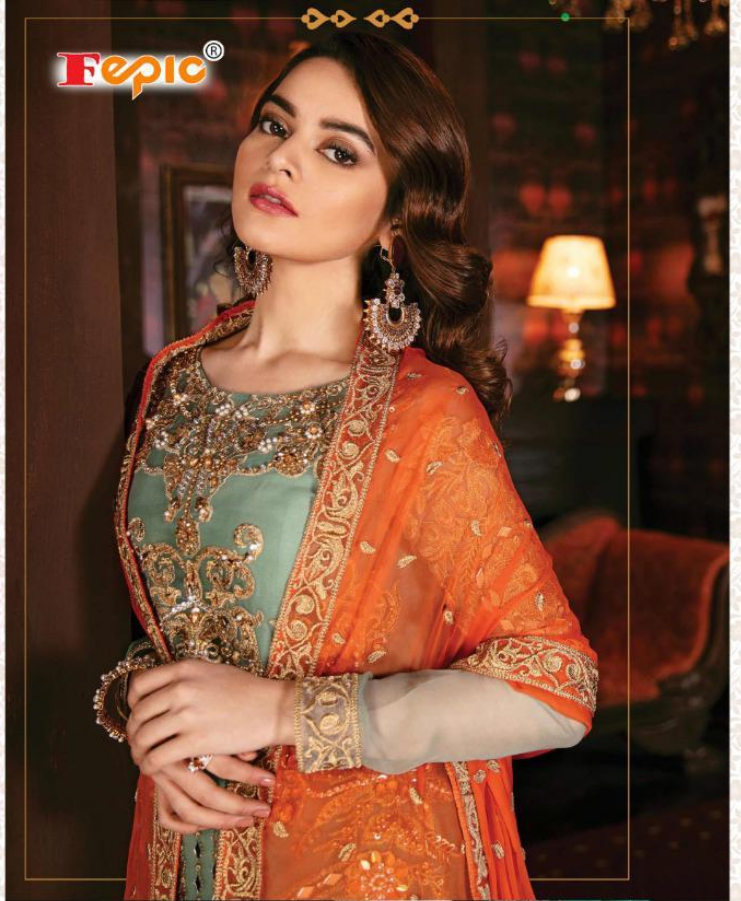
D.NO.
68002



QR

WASHING INSTRUCTIONS

DO NOT USE ANY TYPE OF BLEACH OR STAIN REMOVING CHEMICALS BEFORE CUTTING / STITCHING. FABRIC SHOULD BE SOAKED IN WATER (ALL COMPONENTS SEPARATELY) FOR 15 MINUTES
DO NOT KEEP WET FABRIC IN TWISTED FORM IN ORDER TO AVOID COPY MARKS |
WASH COLOURED AND WHITE FABRICS SEPARATELY
IRON CLOTHES AT MODERATE TEMPERATURE | DO NOT DRY FABRIC IN DIRECT SUNLIGHT



ROSEMEEN
Carnival 20

D.NO.
68003



QR

WASHING INSTRUCTIONS

DO NOT USE ANY TYPE OF BLEACH OR STAIN REMOVING CHEMICALS BEFORE CUTTING / STITCHING. FABRIC SHOULD BE SOAKED IN WATER (ALL COMPONENTS SEPARATELY) FOR 15 MINUTES

DO NOT KEEP WET FABRIC IN TWISTED FORM IN ORDER TO AVOID COPY MARKS | WASH COLOURED AND WHITE FABRICS SEPARATELY

IRON CLOTHES AT MODERATE TEMPERATURE | DO NOT DRY FABRIC IN DIRECT SUNLIGHT



ROSEMEEN
Carnival '20

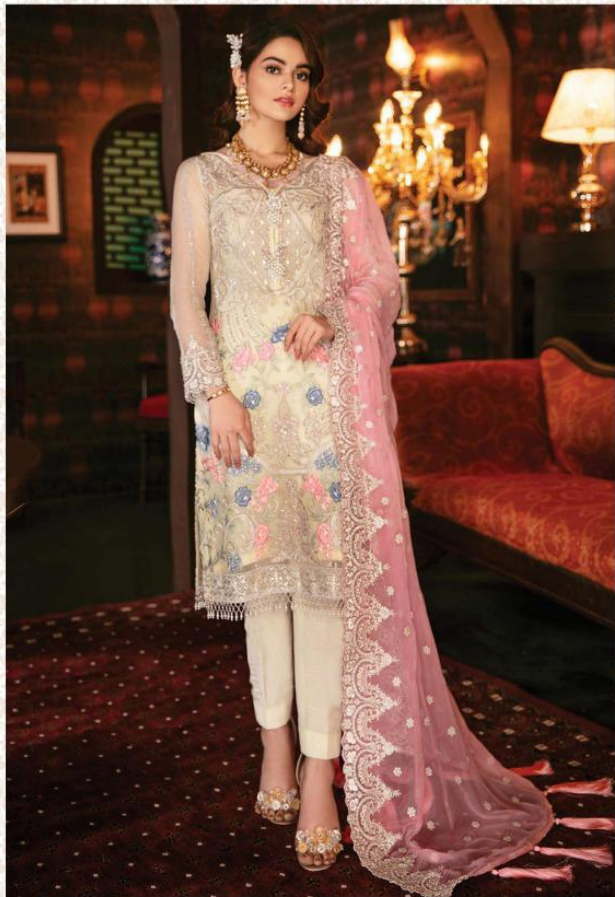
D.NO.
68006



QR

WASHING INSTRUCTIONS

DO NOT USE ANY TYPE OF BLEACH OR STAIN REMOVING CHEMICALS BEFORE CUTTING / STITCHING. FABRIC SHOULD BE SOAKED IN WATER (ALL COMPONENTS SEPARATELY) FOR 15 MINUTES
DO NOT KEEP WET FABRIC IN TWISTED FROM IN ORDER TO AVOID COPY MARKS |
WASH COLOURED AND WHITE FABRICS SEPARATELY
IRON CLOTHES AT MODERATE TEMPERATURE | DO NOT DRY FABRIC IN DIRECT SUNLIGHT



ROSEMEEN
Carnival 20

D.NO.
68001



QR

WASHING INSTRUCTIONS

DO NOT USE ANY TYPE OF BLEACH OR STAIN REMOVING CHEMICALS BEFORE CUTTING / STITCHING. FABRIC SHOULD BE SOAKED IN WATER (ALL COMPONENTS SEPARATELY) FOR 15 MINUTES

DO NOT KEEP WET FABRIC IN TWISTED FORM IN ORDER TO AVOID COPY MARKS | WASH COLOURED AND WHITE FABRICS SEPARATELY

IRON CLOTHES AT MODERATE TEMPERATURE | DO NOT DRY FABRIC IN DIRECT SUNLIGHT