









REALM OF FANTASY  
FASHION'S LUXURIOUS ALLORE

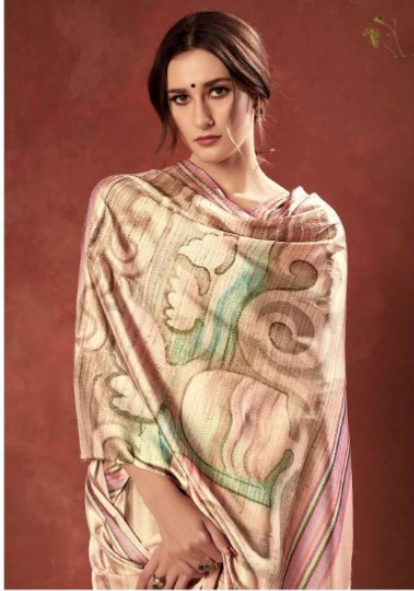


D.NO. 20402





REALM OF FANTASY  
EMBRACE SOPHISTICATED CHARM WITH THE SOFT  
FEMININE FINISH OF CHIFFON.



D.NO. 20407

Apple





D.NO. 20401 (PRIMIUM CRAP) D.NO. 20402 (PRIMIUM CRAP) D.NO. 20403 (PRIMIUM CRAP) D.NO. 20404 (PRIMIUM CRAP) D.NO. 20405 (PRIMIUM CRAP) D.NO. 20406 (PRIMIUM CRAP) D.NO. 20407 (PRIMIUM CRAP) D.NO. 20408 (PRIMIUM CRAP) D.NO. 20409 (PRIMIUM CRAP) D.NO. 20410 (PRIMIUM CRAP)







  
**ETHEREAL APPEAL**  
SHOW OFF YOUR SOFTER SIDE THIS AUTUMN WITH FLIRTY,  
FLOWING & FEMININE SILHOUETTES.



D.NO. 20404  




**REFINED LUXURY**  
ADD A STRIKING STATEMENT TO YOUR LOOK WITH PIECES  
DESIGNED TO EVIDE FEMININITY & CLASS





AMAZING GRACE  
IT'S ALL YOU NEED FOR PERFECTION THIS SEASON



D.NO. 20403





REFINED LUXURY  
IT WAS ERA WHEN MEN WERE MEN



D.NO. 20405





PAINTERLY STROKES  
INDULGE IN GUL AHMAD'S FLOATY  
RENDERINGS....

D.NO. 20406

Decorative floral motifs are present at the bottom of the page.

LUSH'ALLURING  
SHADES OF GREEN ACCENTED WITH EXCLUSIVE EMBROIDERIES....







Flowerly

VO L-03



D.NO. 20401

