





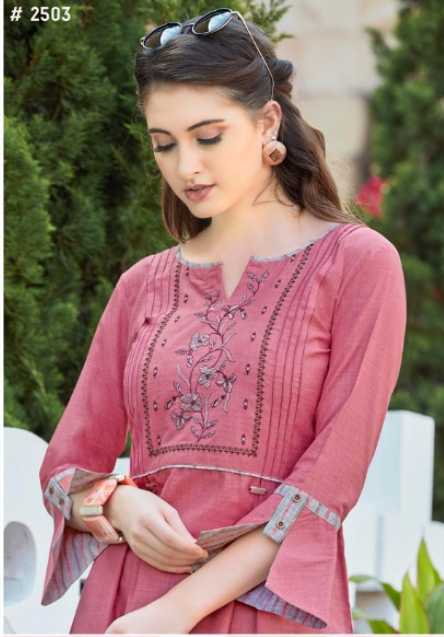


MODE
THIS SEASON FOLLOW THE PERFECT MOOD OF STYLE



2506

2503



ENJOY THE POWER OF OUR VARIABLE STYLE LOOK.





Rangoon



CATALOG NAME

Dream Line

PIECES : **8**

	FABRICS DETAILS
TOP	Linen Square Western Top with Embroidery Work & South Cotton Lining Palazzo Pent
Size	M, L, XL, XXL, 3XL

M

2501

The business of your affection. The power of your love that makes you so different. That makes you so unique. A delightful experience.

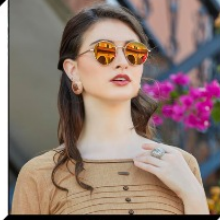
MODE

THIS SEASON FOLLOW THE PERFECT MOOD OF STYLE





DRAPING YOU IS AN
YOU ARE THE CANVAS



LET YOUR STYLE
BECOME YOU



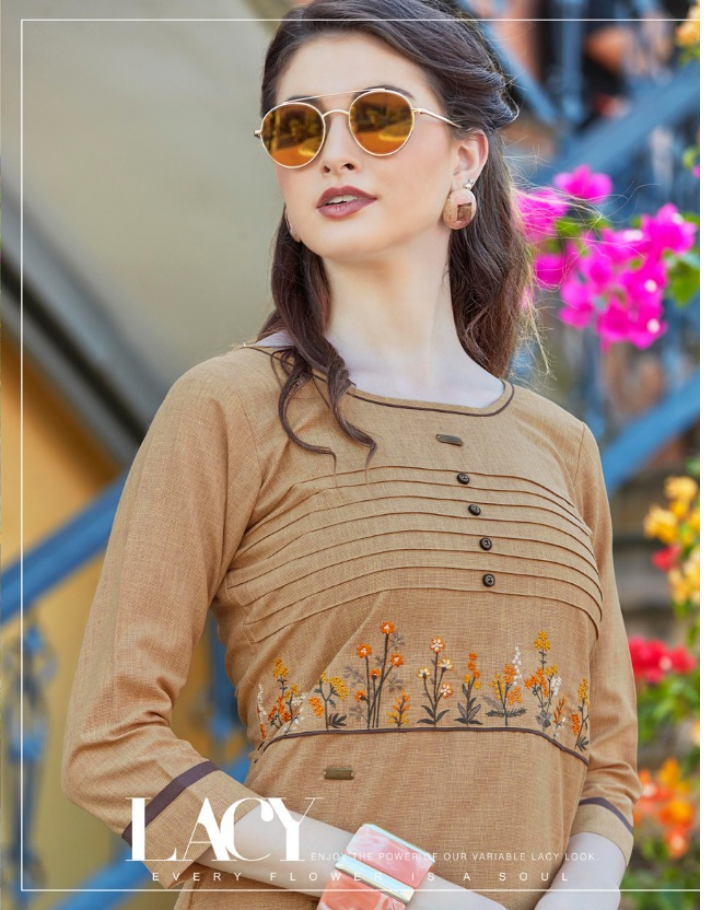
YOU, BEING IN THIS DRESS,
MAKES IT MORE ALIVE



WITH THE BEAUTIFUL YOU







2505

LACY
ENJOY THE POWER OF OUR VARIABLE LACY LOOK.
EVERY FLOWER HAS A SOUL



2501



2502



2505



2506



2503



2504



2507



2508



R

The business of your affection the power of your love that makes you so proud that makes you so proud a delightful experience

RARE

BEHIND THE RARE LOOK WITH THE HOT FASHION EVERY FLOWER IS A SOUL



2508

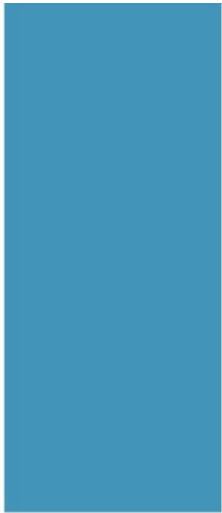
CHIC

EXPLORE THE WONDERS OF YOUR CHIC LOOK



with it's vibrant prints , bold colors the new season on the indian runway is the perfect mix of modern and ethnic. all you have to do choose your favourite





A PRODUCT BY



SAREE | SUITS | LEHENGA | TUNICS

Follow us on



complimentary copy not for sale



www.rangoon.com



ACQUIRE THE RARE LOOK WITH THIS HOT SKY DRESS.

EVERY FLOWER IS A SOUL



Dream line

RARE

ASSURE THE RARE LOOK WITH THIS HOT PINK DRESS

EVERY FLOWER IS A SOUL



2508

The softness of your affection, the power of your love that makes you so different that makes you so unique. A delightful experience.