



*Azure*

313



*Azure*

313



311



312



315



316



313



314

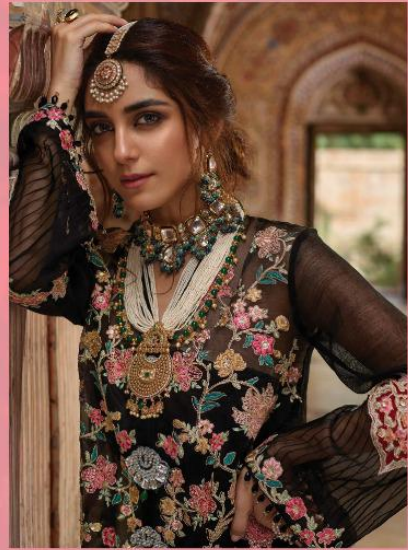


317

**DEESY**  
SUITA  
*Crimson*



*Classic*



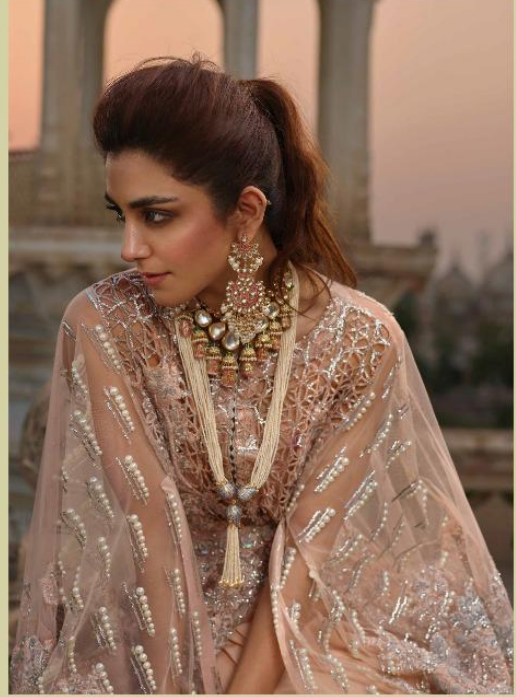
*Perfect*

**S**  
**DEEPLY**  
LIFE



  
*Chatta Patti*  
312

**D**  
**DEEPLY**  
SUITS



*Crimson*

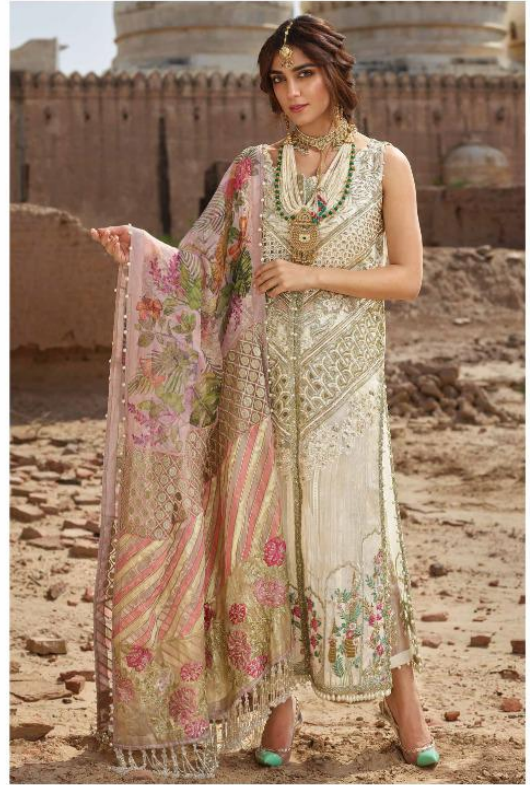
**D**  
**DEEPLY**  
SUITS

Email : [deepysuits572@gmail.com](mailto:deepysuits572@gmail.com)

\*Complimentary copy-not for sale\*



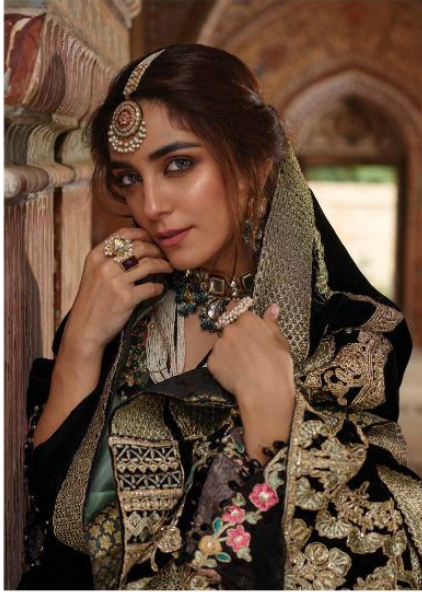
**D**  
DEEPSY  
SUITA



*Porcelain*

314

*Kashmiri*



316

**S**  
DEEPSY  
2014



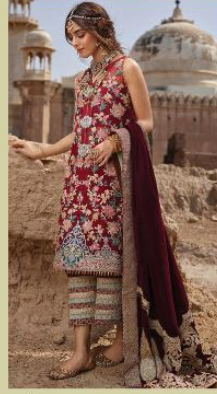




311



312



315



316



313



314



317

  
**DEETSY**  
 KURTA  
*Crimson*



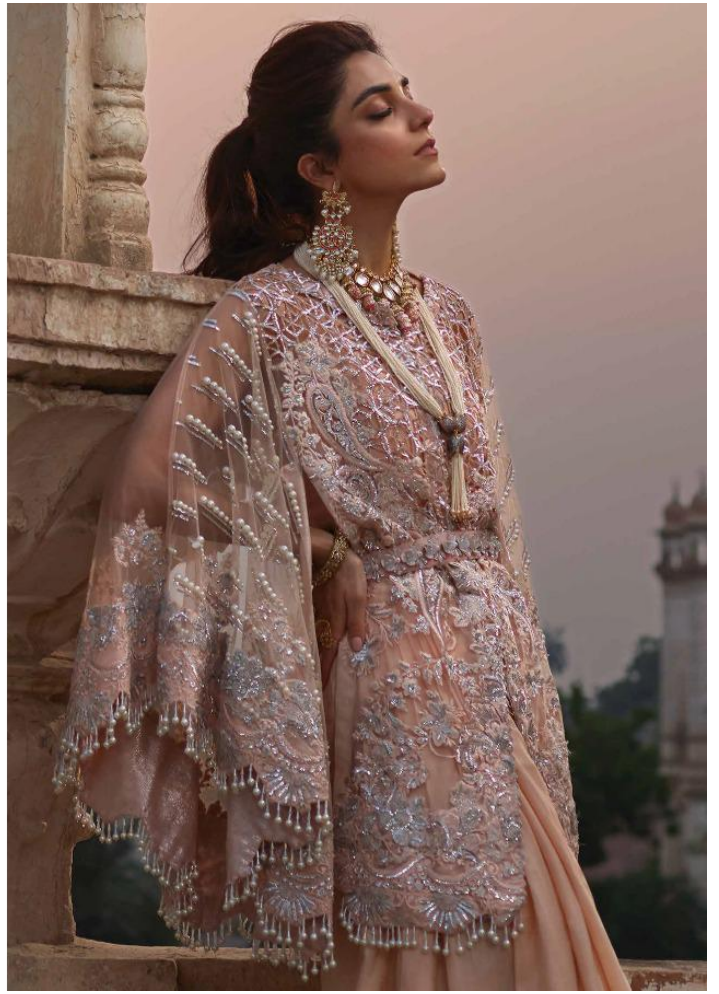
*Azure*

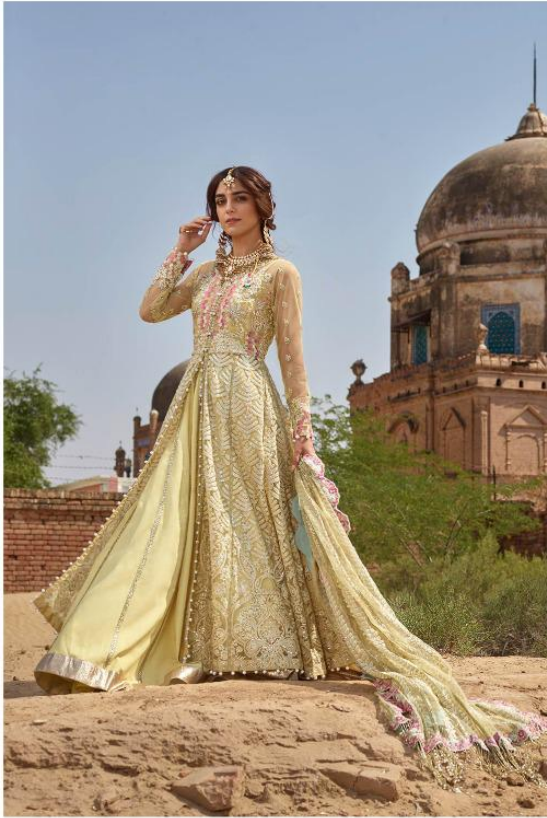
313



*Starry Night*

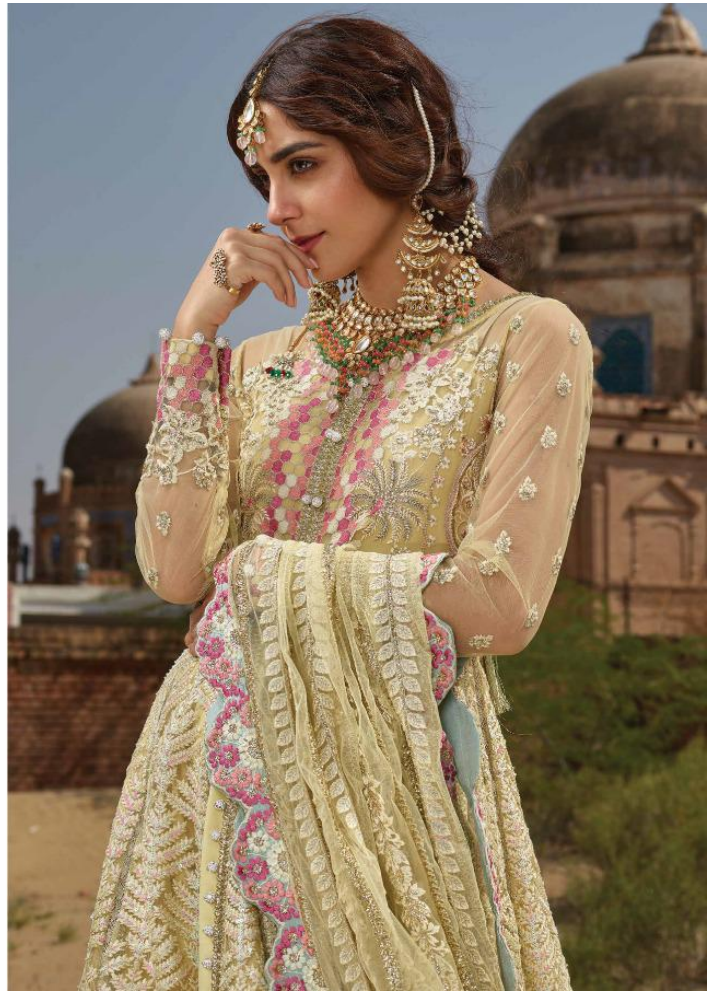
317





*Chikkankari*

311





DEESY

315

PRESENTING TO YOU OUR NEW CATALOGUE



**DEEPSY**  
SUITS

*Crimson*

DESIGN NO.	CATLOG NAME	DESCRIPTION	PRICE
311	<i>Crimson</i>	TOP : Butterfly net with heavy embroidery & handwork Santoon with accessories BOTTOM : Butterfly net with heavy embroidery & DUPATTA : embroidery lace	1349/-
312	<i>Crimson</i>	TOP : Butterfly net with heavy embroidery & handwork BOTTOM : Santoon DUPATTA : Butterfly net with heavy embroidery & embroidery lace	1349/-
313	<i>Crimson</i>	TOP : Butterfly net with heavy embroidery & handwork BOTTOM : Santoon DUPATTA : Organza digital print with embroidery	1349/-
314	<i>Crimson</i>	TOP : Butterfly net with heavy embroidery & handwork BOTTOM : Santoon DUPATTA : Organza digital print with embroidery	1349/-
315	<i>Crimson</i>	TOP : Georgette with heavy embroidery BOTTOM : Santoon DUPATTA : Velevt with heavy embroidery	1349/-
316	<i>Crimson</i>	TOP : Georgette with heavy embroidery BOTTOM : Santoon DUPATTA : Velevt with heavy embroidery	1349/-
317	<i>Crimson</i>	TOP : Butterfly net with heavy embroidery & handwork BOTTOM : Santoon DUPATTA : Butterfly net with heavy embroidery & embroidery lace	1349/-

Total Pieces:7

Total Amount: 9443+ GST