

A woman is the central figure, wearing a long-sleeved, floor-length pink kurta with a matching wide-leg pant. The kurta features intricate embroidery on the neckline and cuffs. A sheer yellow dupatta with a pink border is draped over her shoulders. She is standing in a room with a gold-colored, patterned wallpaper and several large, ornate gold wall decorations. To her right is a gold-colored table with two glass vessels and a small floral arrangement. The overall aesthetic is traditional Indian elegance.

RELISSA<sup>®</sup>  
FABRICS

Kalki  
कल्की

25001



A woman is the central figure, wearing a long-sleeved, floor-length pink kurta with a matching wide-leg pant. The kurta features intricate embroidery on the neckline and cuffs. A sheer yellow dupatta with a pink border is draped over her shoulders. She is standing in a room with a gold-colored, patterned wallpaper and several large, ornate gold wall decorations. To her right is a gold-colored table with two glass vessels and a small arrangement of flowers. The overall aesthetic is traditional and elegant.

RELISSA<sup>®</sup>  
FABRICS

Kalki  
कल्की

25001







RELISSA  
FABRICS

Kalki  
कल्की





A woman is the central figure, wearing a long-sleeved, floor-length pink kurta with a matching wide-leg pant. The kurta features intricate embroidery on the neckline and cuffs. A sheer yellow dupatta with a pink border is draped over her shoulders. She is standing in a room with gold-colored, ornate wall decorations. To her right is a gold-colored table with two glass vessels and a small floral arrangement. The overall aesthetic is traditional and elegant.

RELISSA<sup>®</sup>  
FABRICS

Kalki  
कल्की

25001





RELISSA<sup>®</sup>  
FABRICS

Kalki  
कल्की

25005





RELISSA<sup>®</sup>  
FABRICS

Kalki  
कल्की

25003





RELISSA<sup>®</sup>  
FABRICS

Kalki  
कल्की

25004





RELISSA<sup>®</sup>  
FABRICS

Kalki  
कल्की

25006





25005



RELSSA  
PUNJAB



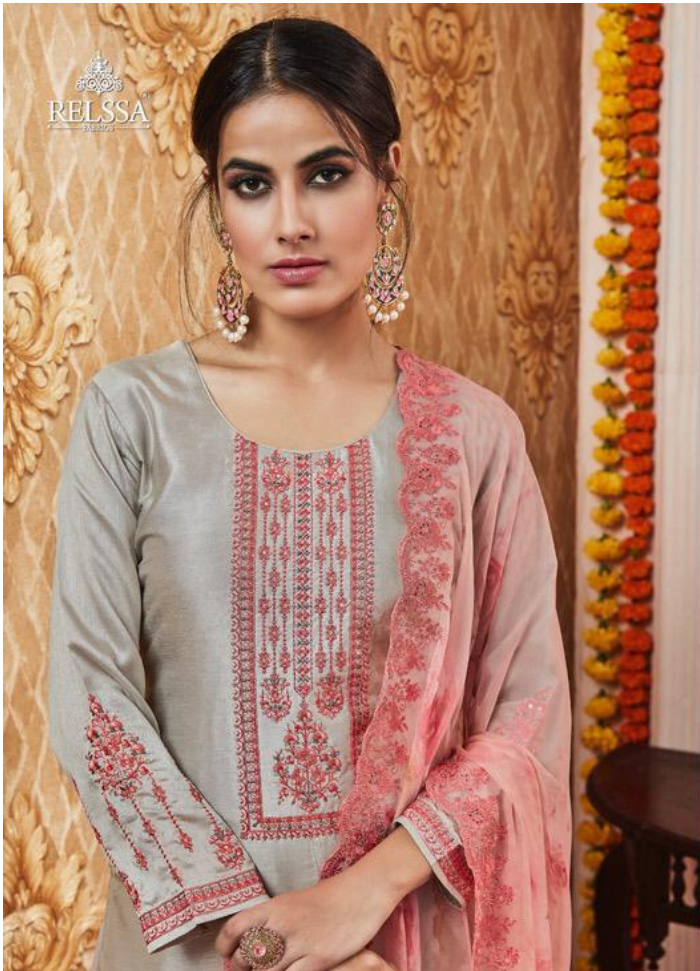
RELISSA  
FABRICS



I'm not super-conservative, but a bit of tradition is nice.  
25002







25006

| As far as indian wear is concerned, more is more and less is a bore!







RELISSA

25001



25002



25003



25004



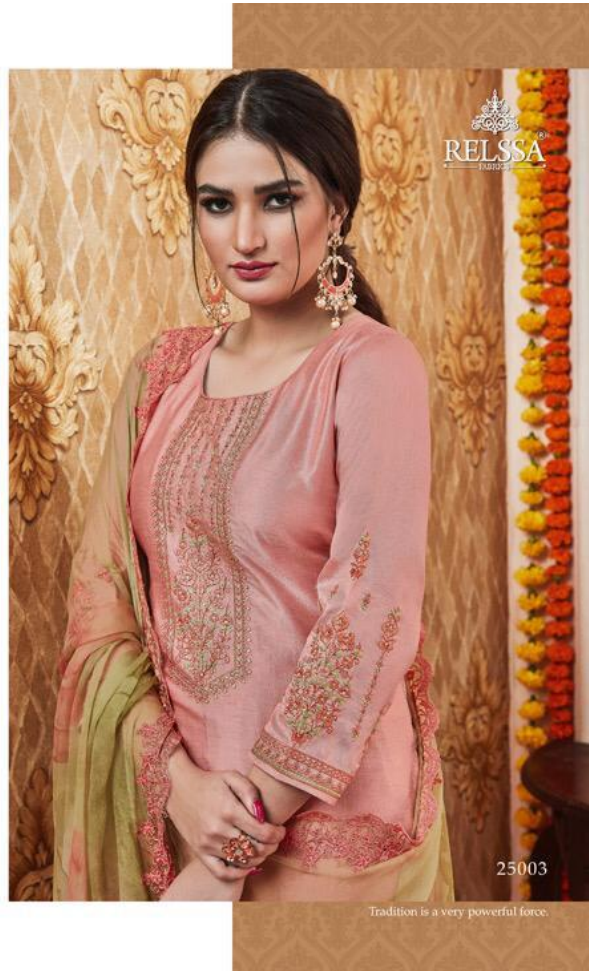
25005



25006











25003





A woman with dark hair is standing in a room with ornate, gold-colored wall decorations. She is wearing a light green, long-sleeved kurta with a red and gold embroidered border down the center and at the hem. She is also wearing a sheer orange dupatta with a red lace border. To her right is a gold-colored table with two glass vessels and a small arrangement of orange flowers. The background wall is covered in gold-colored, ornate wall paper with a repeating floral pattern.

RELISSA<sup>®</sup>  
FABRICS

Kalki  
कल्की

25002





  
**RELSSA**  
fabrics

You have a more interesting life if  
you wear impressive clothes.

25005

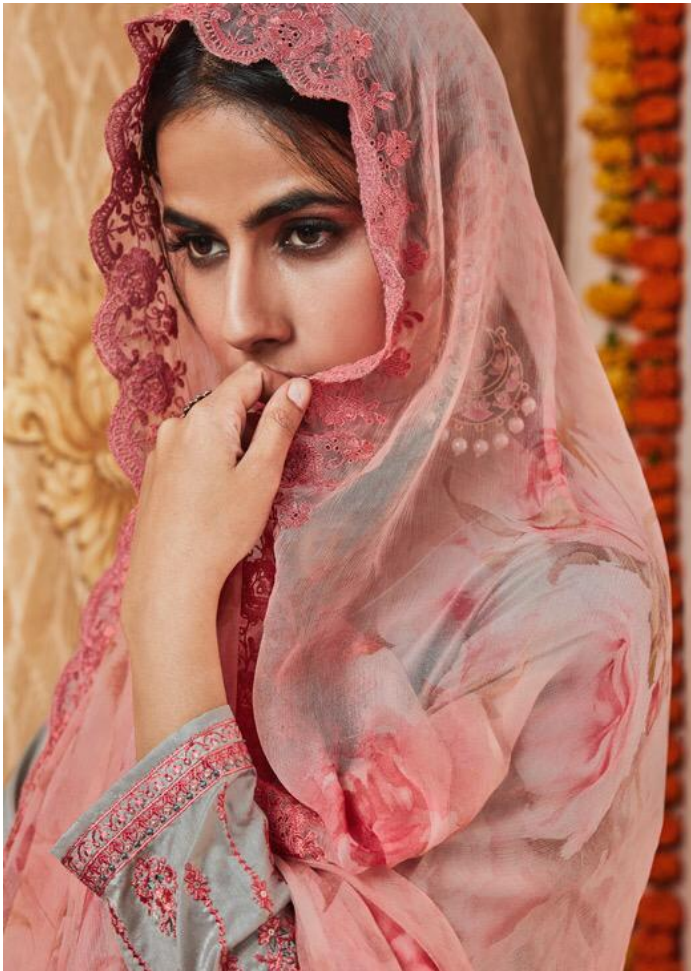




RELISSA  
PASTEL

25004





25006



Subject to SURAT Jurisdiction

Shree Ganeshay Naham

Ph. : 0261-2334200  
Mo. : 099251 93200  
E-mail : relssafabrics@gmail.co  
Website : www.relssafabrics.com



EXCLUSIVE FANCY  
DRESS MATERIALS

GSTIN : 24AEDPR1652J12

3088 to 3091, 3rd Floor, Annapurna Textile Market, Ring Road, Surat-2.

Ref. No. :

Date :

**KALKI**

**RATE:1650/-**

**TOP**

**TUSSER SILK**

**FANCY EMBROIDERY WORK**

**DUPATTA**

**PURE CHIFFON DIGITAL PRINT**

**WITH EMBROIDERY WORK**

**BOTTOM**

**SUPERIOR COTTON**

DESIGN	PRODUCT NAME	HSN CODE-5407
<b>D.NO:-25001 TO 25006</b>	<b>KALKI</b>	
TOTAL SUITS	TOTAL AMOUNT	AVG.RATE
<b>06</b>	<b>9900/-</b>	<b>1650/-</b>

BY:- RELSSA FABRICS( SAJJAN)



RELSSA  
FABRICS

RELSSA  
FABRICS

EXCLUSIVE FANCY DRESS MATERIALS

527-28, Upper Ground, Annapurna Textile Market,

Ring Road SURAT-2

Mo: +91 99261 93200

Fb: 1081 2334200

www.relssafabrics.com

Email: relssafabrics@gmail.com

( FORMERLY KNOWN- SAJJAN )

SAJJAN

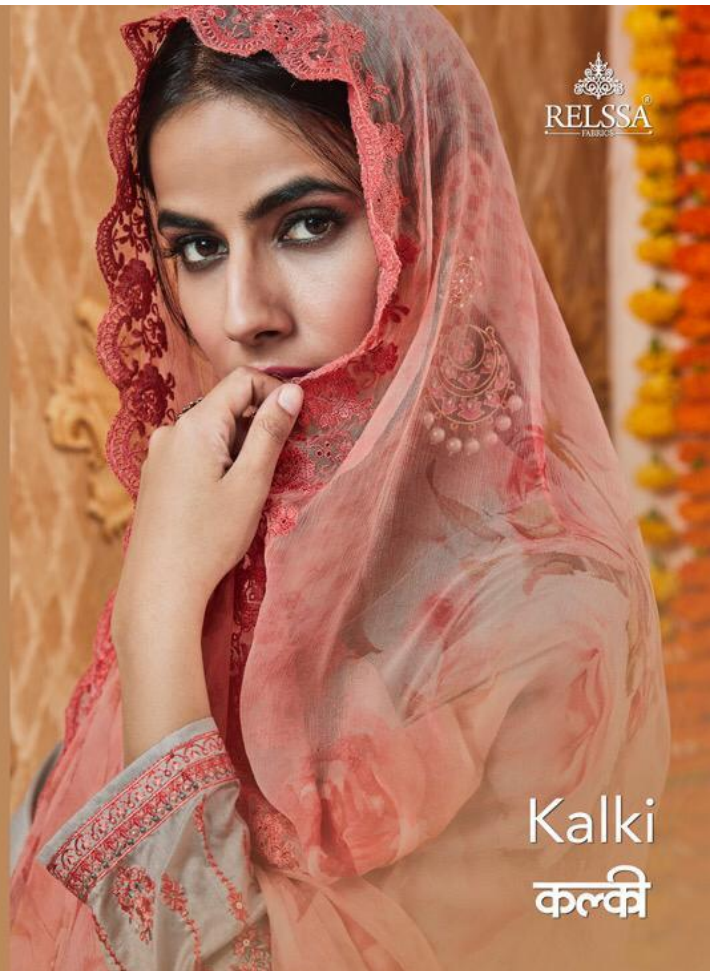
NOW FOLLOW RELSSAFABRICS ON



WARNING

ALL RIGHTS RESERVED WITH RELSSA FABRICS

COMPLIMENTARY COPY / NOT FOR SALE



Kalki  
कल्की





  
RELISSA  
— FASHION —





Kalki  
कल्की

