



Sampann^{nx}

Let's define
the Rightness for Rightness
with
- classic creations -



Sampann^{nx}

Let's define
the Rightness for Rightness
with
- classic creations -



Sangam

• 5503 •

-the fashionista lla ...





Sangam

• 5504 •

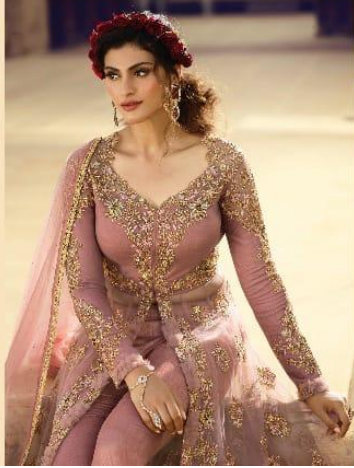
Red shiver
the princess in you
with emerald and
diamonds in this
uniquely styled



Sangrean 20

• 5504 •

— the princess pavlovskiy —







Sampann^{nx}

Let's define
the Rightness for Rightness
with
- classic creations -



Sangre

• 5803 •

introduce
the fashionista in you
with this splendid
beauty



• 5501 •



• 5502 •



• 5505 •



• 5506 •



• 5503 •



• 5504 •



• 5507 •



Sampann

SAGA

D.NO	DETAILS	PRICE
5501	FEATURING THIS GORGEOUS BLACK PARTY WEAR GOWN IN BUTTERFLY NET WITH BEIGE SATIN INNER. EMBROIDERY WORK IS DONE WITH CODING, THREAD , BADLA, SPARKLE SEQUINS AND STONE EMBELLISHMENT . NECKLINE IS HIGHLIGHTED WITH CUTDANA EMBELLISHMENT. IT IS PAIRED WITH SOFT NET DUPATTA WHICH IS HEAVILY ENHANCED WITH STONE EMBELLISHMENT AND SANTOON BOTTOM.	3165/-
5502	THIS SET FEATURES AN EXQUISITE PASTEL GREEN PARTY WEAR JACKET IN BUTTERFLY NET WITH CROP TOP. EMBROIDERED WITH THREAD, CODING,BADLA, SEQUINS ,STONE & MIRROR WORK. IT IS PAIRED WITH ORGANZA SKIRT & SOFT NET DUPATTA WHICH IS ENHANCED WITH STONE EMBELLISHMENT .	2895/-
5503	FEATURING THIS RADIANT WINE HEAVY EMBROIDERED LONG JACKET IN SILK BASE IS TEAMED WITH MODAL SATIN SHARARA. EMBROIDERED WITH THREAD, BADLA, CODING, JARI, SEQUINS & STONE EMBELLISHMENT . IT IS PAIRED WITH SOFT NET DUPATTA WHICH IS HEAVILY ENHANCED WITH STONE EMBELLISHMENTS .	3385/-
5504	FEATURING THIS STUNNING DARK BEIGE ANARKALI SUIT IN BUTTERFLY NET EMBROIDERED WITH THREAD, BADLA,JARI,SEQUINS & LASER CUT FLOWERS.IT IS PAIRED WITH BANGLORI (LEHENGA AND PANTS). PANT IS ENHANCED BY BEAUTIFUL EMBROIDERY. IT ALSO COMES ALONG WITH SOFT ROUND NET DUPATTA WHICH IS HEAVILY ENHANCED WITH STONE WORK.	3595/-
5505	FEATURING THIS CHARCOAL GREY PARTY WEAR GOWN WHICH WILL GIVE YOU A DIVA LOOK. FEATURES AN EMBROIDERED BUTTERFLY NET WITH SANTOON INNER. EMBROIDERY IS BEAUTIFIED WITH CODING, JARI, BADLA, THREAD, SEQUINS, STONE EMBELLISHMENT. NECKLINE IS HAND EMBROIDERED IN MIRROR, BEAD & JARKAN . IT ALSO COMES ALONG WITH SOFT ROUND NET DUPATTA WHICH IS HEAVILY ENHANCED WITH STONE WORK AND SANTOON BOTTOM.	3275/-
5506	RAVISHING GREY PARTY WEAR GOWN IN BUTTERFLY NET BASE WITH SANTOON INNER. EMBROIDERY IS COMPLETED WITH CODING, JARI, BADLA, THREAD, SEQUINS, STONE & MIRROR EMBELLISHMENT.IT ALSO COMES ALONG WITH SOFT ROUND NET DUPATTA WHICH IS HEAVILY ENHANCED WITH STONE WORK AND SANTOON BOTTOM.	3345/-
5507	STUNNING YELLOW PARTY WEAR ANARKALI STYLE SUIT IN BUTTERFLY NET BASE EMBROIDERED WITH CODING, THREAD, BADLA & SEQUINS.IT IS PAIRED WITH BANGLORI (LEHENGA AND PANTS). PANT IS ENHANCED BY BEAUTIFUL EMBROIDERY. IT ALSO COMES ALONG WITH SOFT ROUND NET DUPATTA WHICH IS HEAVILY ENHANCED WITH STONE WORK.	3095/-
	AVERAGE PRICE PER PCS = 3250/-	22755/-
GST CHARGES EXTRA		



Rediscover the princess in you with
embellished formal in this
saree collection.



Suryaan®

• 5804-5805 •

Rediscover
the princess in you
as it is embellished
fabrics in these
-unique styles-







Express the pride in you
with bright & bold
—mustache with—



Sangamini

• 5601 •



affirm the dramatic you
with this
-beautiful dress-



Sangam 10

• 5504 •

Show off
the queen in you
with 2 B. Classic
-celebrity-



Samantha

• 5501 •

affirm
the dramatic you
with this
-be. At. I. blase-



Sampson

• 5506 •

-the queen of the night-





introduce the fashionista to you
with this subtle -beauty-







explore the dreamer in you
with this
-dazzling corpe-





Express the pride in you
with beign & bold
— ruffled women —

