

vastrikaa
style forever

U

The new
way to
wear
fashion

DARK
ANGEL
SPARKLE
COLLECTION

FALL
IN
LOOK

FACE THE SEASON IN THE
LATEST COLLECTION ESSENTIALS!

vastrikaa
style forever

U

The new
way to
wear
fashion

DARK
ANGEL
SPARKLE
COLLECTION

FALL
IN
LOOK

FACE THE SEASON IN THE
LATEST COLLECTION ESSENTIALS!



Design V114

RETRO
AT
LOOL

SHIN
IN YOUR
INTERNAL



Design V109

**ONLY
U**

COLLECTION



U

vastrikaa
style forever



DESIGN NO.	PRODUCT DESCRIPTION
109	MASLIN TOP WITH HANDWORK FANCY DOUBLE LAYER PALAZZO & DUPATTA WITH HANDWORK.
110	MASLIN TOP WITH HANDWORK, DHOTI STYLE PANT & STOLL WITH HANDWORK TASSELS.
111	DOBBY MASLIN TOP WITH HANDWORK & JACQUARD WEAVE PANT.
112	FANCY TWO TONE DOBBY VISCOSE JACKET, TOP WITH HANDWORK & STYLISH SHARARA PANT OF FANCY VISCOSE FABRIC.
113	MASLIN TOP WITH HANDWORK, MASLIN SHARARA & STOLE WITH HANDWORK & TASSEL.
114	FANCY DIGITAL PRINT MASLIN JACKET, RAYON TOP WITH HANDWORK & RAYON SHARARA.

**NEW
SEASON**
shini collection



Design V110

vastrikaa
style forever

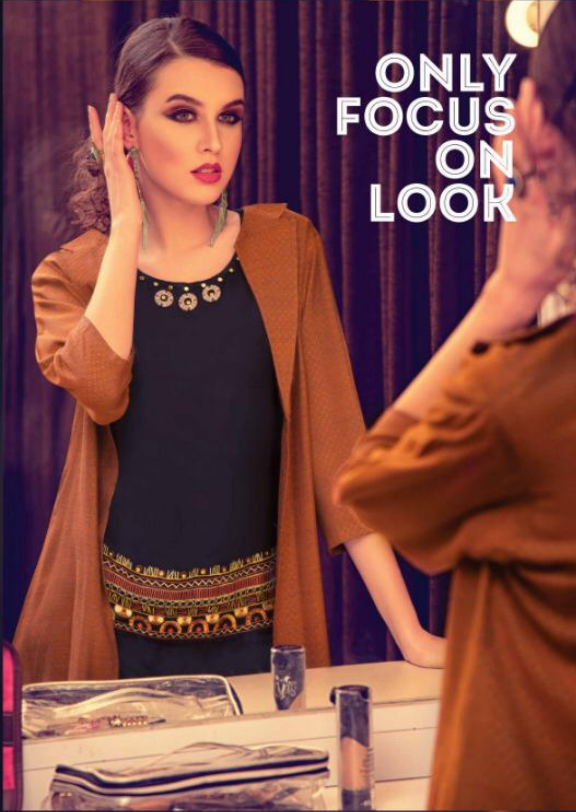
U

The new
way to
wear
fashion

DARK
ANGEL
SPARKLE
COLLECTION

FALL
IN
LOOK

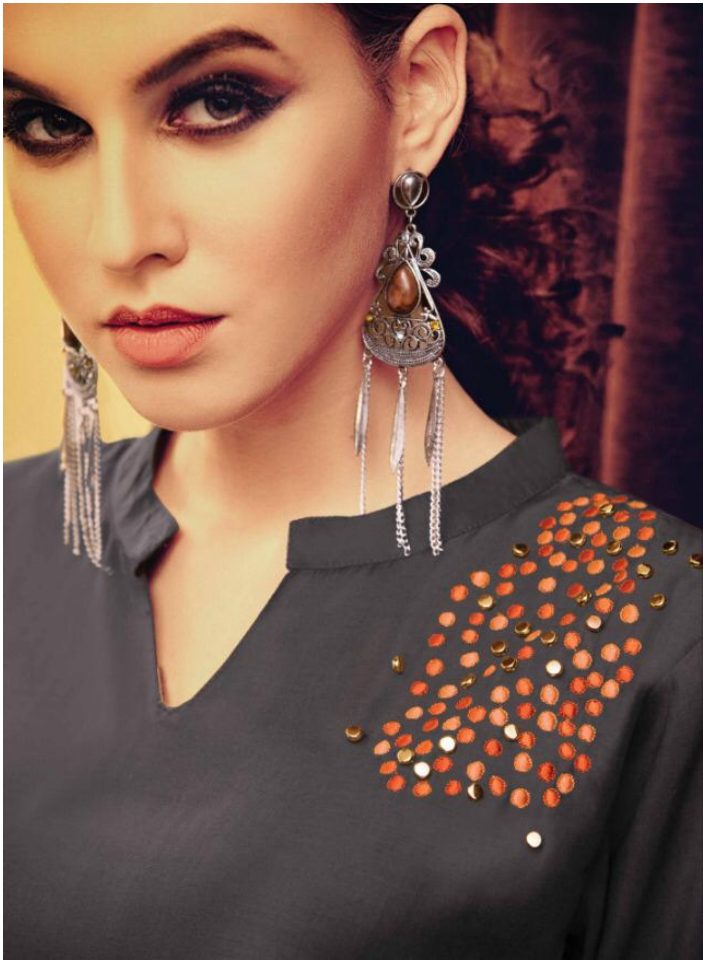
FACE THE SEASON IN THE
LATEST COLLECTION ESSENTIALS!



ONLY
FOCUS
ON
LOOK



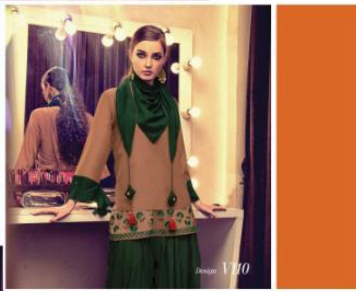
Design V112





design V109

Fashion is about dressing according to what's fashionable. Style is more about being yourself.



design V110



design VIII



design V112



design V113

When you love fashion, there is no weekend. Everything just blends together.



design V114

That is the key of this collection, being yourself. Don't be into trends. Don't make fashion own you, but you decide what you are, what you want to express by the way you dress and the

The heading is a title used to describe the content of the page. It is a key element in the design and helps to guide the reader's eye. The heading is placed at the top of the page and is often in a larger font size than the rest of the text. It is a crucial part of the layout and helps to organize the information. The heading is a key element in the design and helps to guide the reader's eye. The heading is placed at the top of the page and is often in a larger font size than the rest of the text. It is a crucial part of the layout and helps to organize the information. The heading is a key element in the design and helps to guide the reader's eye. The heading is placed at the top of the page and is often in a larger font size than the rest of the text. It is a crucial part of the layout and helps to organize the information.

The heading is a title used to describe the content of the page. It is a key element in the design and helps to guide the reader's eye. The heading is placed at the top of the page and is often in a larger font size than the rest of the text. It is a crucial part of the layout and helps to organize the information. The heading is a key element in the design and helps to guide the reader's eye. The heading is placed at the top of the page and is often in a larger font size than the rest of the text. It is a crucial part of the layout and helps to organize the information. The heading is a key element in the design and helps to guide the reader's eye. The heading is placed at the top of the page and is often in a larger font size than the rest of the text. It is a crucial part of the layout and helps to organize the information.

FASHION INSIDE



Design VIII



vaatrikaa