

The logo for Riya Designer features a stylized letter 'R' composed of several colorful geometric shapes (yellow, green, blue, red) arranged in a circular pattern. To the right of the 'R', the word 'Riya' is written in a blue, cursive-style font with a trademark symbol (TM) at the top right. Below 'Riya', the word 'DESIGNER' is written in a smaller, black, sans-serif font, all contained within a thin white rectangular border.

RiyaTM
DESIGNER

The text 'AaRa' is written in a large, elegant, purple cursive font. The letters are interconnected, with a small floral flourish at the end of the 'a' and another at the end of the 'Ra'. The text is positioned at the bottom center of the image, overlapping the lower part of the woman's dress.

AaRa



1015



1014



1018



COMFORTABLE & LOVABLE
♦♦♦♦



1013 BE DELICATE AND CRAFTY IN DETAILS OR EVERYONE IS WATCHING YOU. FASHIONABLE KURTIS WITH CREATIVE COLORS.
♦♦♦♦



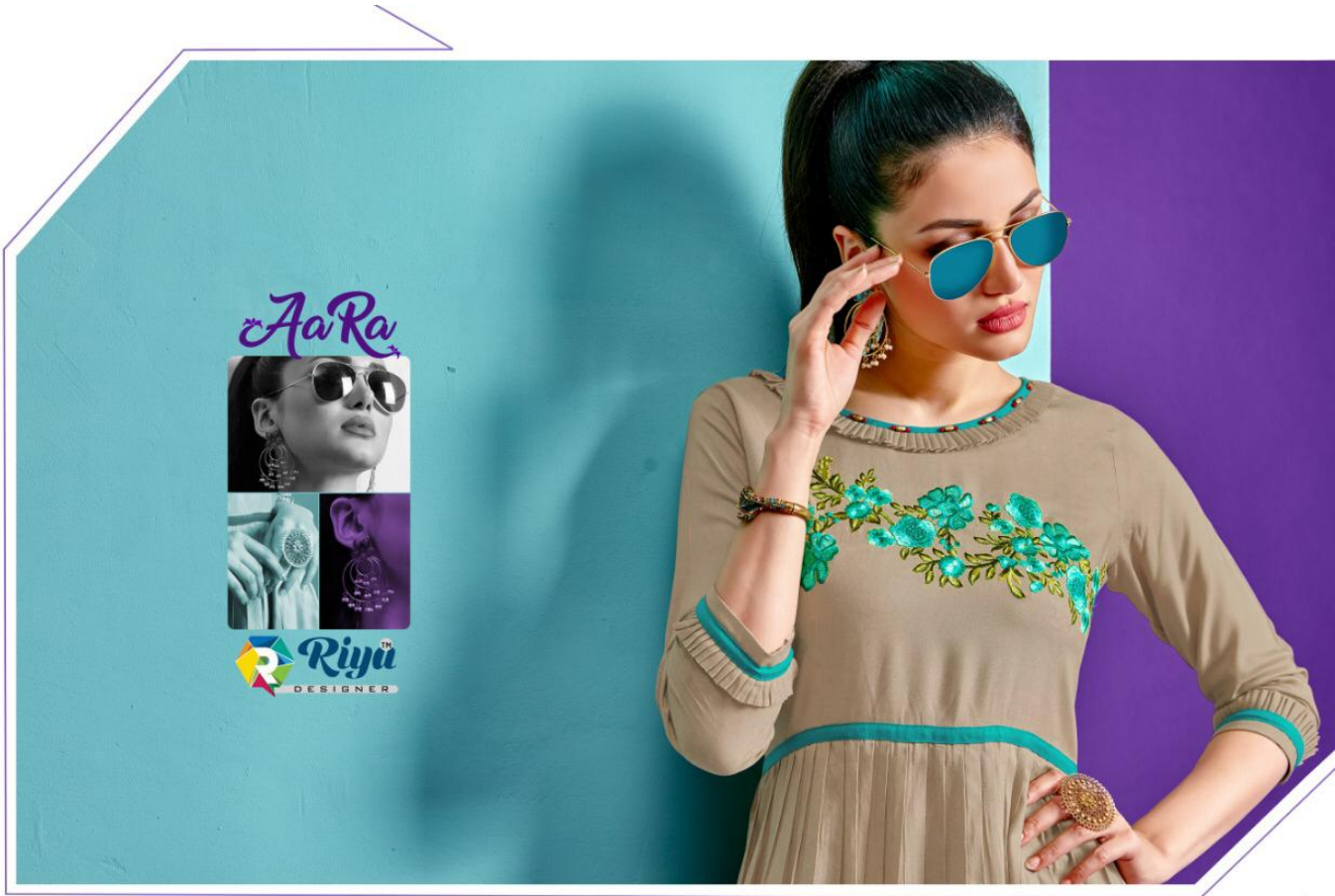
1016

FASHION IS AN IMPORTANT

BEFORE YOU BUY THINK CAREFULLY
WHEN YOU DECIDE TO BUY TO
BEFORE YOU BUY TO BUY ALL
REASON: *****

1014





AaRa



Riyu
DESIGNER



"COMPLIMENTARY COPY NOT FOR SALE"



COMFORTABLE & LOVABLE

1017



■■■■ BE THE PANEL AND GREAT AND HAPPY ON EVERYONE BY WEAVING THE FASHIONABLE RUMI WITH CREATIVE COLORS.

ELEGANCE NEVER FADES
♦♦♦♦



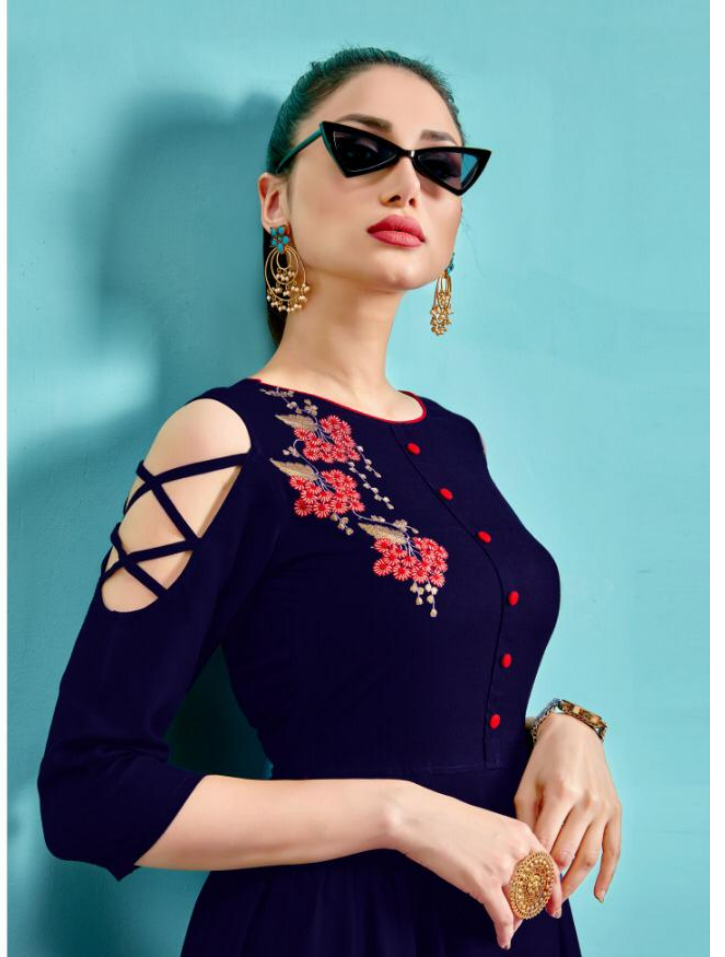
RENEW YOUR STYLE WITH THIS ELEGANT DRESS CREATED FOR
THAT SPECIAL SUMMER OCCASION. ♦♦♦♦

1016





1015





1018



1013



1014



1015



1016



1017



1018



1017

The logo for Riya Designer features a stylized letter 'R' composed of several colorful triangles (yellow, green, blue, red) arranged in a circular pattern. To the right of the 'R', the word 'Riya' is written in a blue, cursive-style font with a trademark symbol (TM) at the end. Below 'Riya', the word 'DESIGNER' is written in a smaller, black, sans-serif font, all contained within a thin white rectangular border.

RiyaTM
DESIGNER

The text 'AaRa' is written in a large, elegant, purple cursive font. The letters are interconnected, with a small floral flourish at the end of the 'a' and another at the end of the 'Ra'. The text is positioned at the bottom center of the image, overlapping the lower part of the woman's dress.

AaRa