

Fepic®



ROSEMEEN

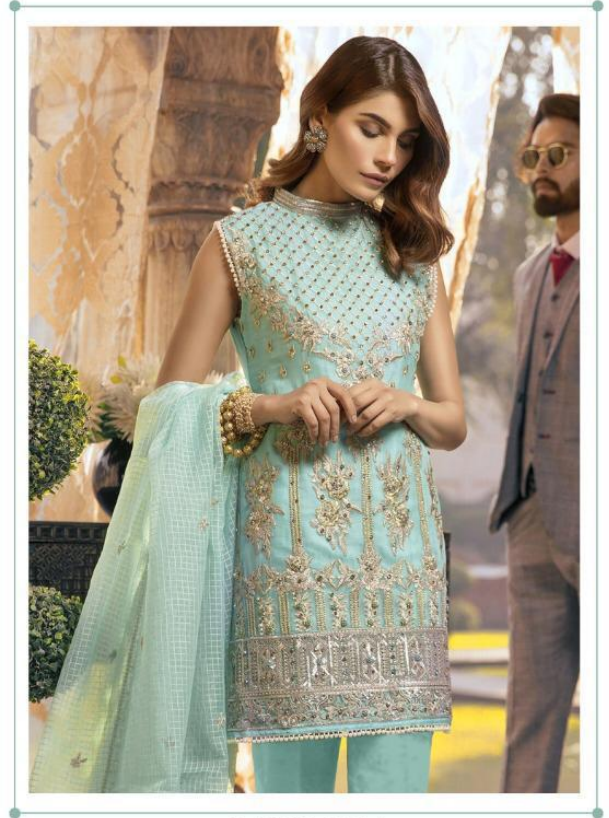
signature



D.NO.36006



D.NO.36005



D.NO.36004



D.NO.36003

Fepic®




ROSEMEEN


signature

Fepic®

ROSEMEEN

signature

 :_Fepic

 :Fb.com/Fepic11



A woman with long, wavy brown hair is the central figure, looking down and to her right. She is wearing a vibrant red, long-sleeved tunic with intricate gold and green floral embroidery. A green shawl with gold floral patterns is draped over her left shoulder. She is also wearing a gold necklace. The background features a room with a lamp on a side table, a potted plant, and patterned curtains. The overall lighting is warm and soft.

FEPIC®

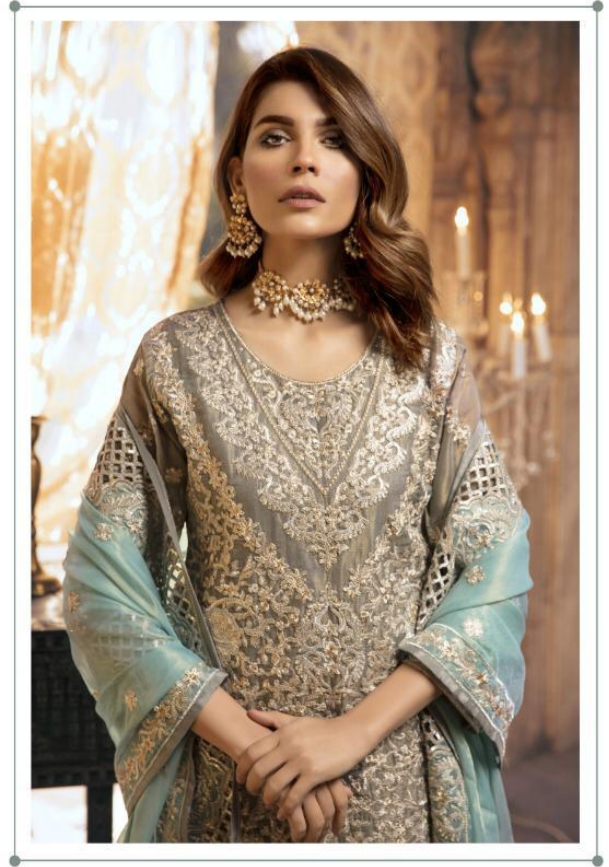
ROSEMEEN

signature





D.NO.36001




D.NO.36002




Fepic®

ROSEMEEN

signature

 :_Fepic

 :Fb.com/Fepic11



D.NO.36001



D.NO.36002



D.NO.36003



D.NO.36004



D.NO.36005



D.NO.36006



Fepic®
ROSEMEEN
signature

| D.NO | TOP | BOTTOM | INNER | DUPATTA |
|-------------|-------------------|---------------|--------------|---------------------------|
| 36001 | FAUX GEORGETTE | SANTOON | SANTOON | NET WITH HEAVY EMBROIDERY |
| 36002 | HEAVY NET | SANTOON | SANTOON | PURE ORGANZA SILK |
| 36003 | FAUX GEORGETTE | SANTOON | SANTOON | NET WITH HEAVY EMBROIDERY |
| 36004 | FAUX GEORGETTE | SANTOON | SANTOON | KOTA CHECKS |
| 36005 | FAUX GEORGETTE | SANTOON | SANTOON | NET WITH HEAVY EMBROIDERY |
| 36006 | PURE ORGANZA SILK | SANTOON | SANTOON | HEAVY JAQUARD |

Fepic[®]

ROSEMEEN
signature

 :_Fepic

 :Fb.com/Fepic11

Fepic®



ROSEMEEN

signature