

*Style  
Eternal*

A breath taking array of fine detailing & intricate design inspired by Indian culture.....

  
**SAYURI**<sup>®</sup>  
Designer



# Adah

REFINING THE FUTURE OF FASHION



**D NO-5629**



**D NO-5630**



**D NO-5631**

  
**SAYURI**<sup>®</sup>  
Designer

**Adah**  
REFINING THE FUTURE OF FASHION













## THE MOST POWERFUL ART



**SAYURI**<sup>®</sup>  
Designer



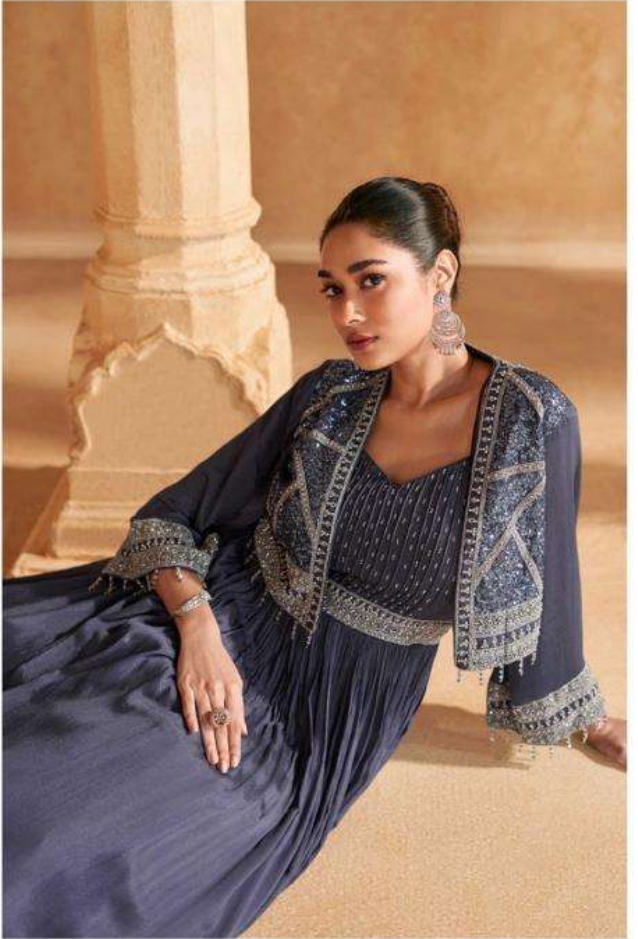
Embrace your love for prints.

Whether you mix & match or go head-to-toe.

Just remember there are no rules.

**D No - 5631**





**SAYURI**<sup>®</sup>  
Designer

Celebrate This Season with Color Contrast that Promise to Shock the Sun &  
Revel in the Surprise of this Hot New Trend.



**SAYURI**<sup>®</sup>  
Designer



**D No - 5630**





■ ■ ■ ■ ■  
SAYURI®  
— Designer







Look Gorgeous  
**EVERYDAY**

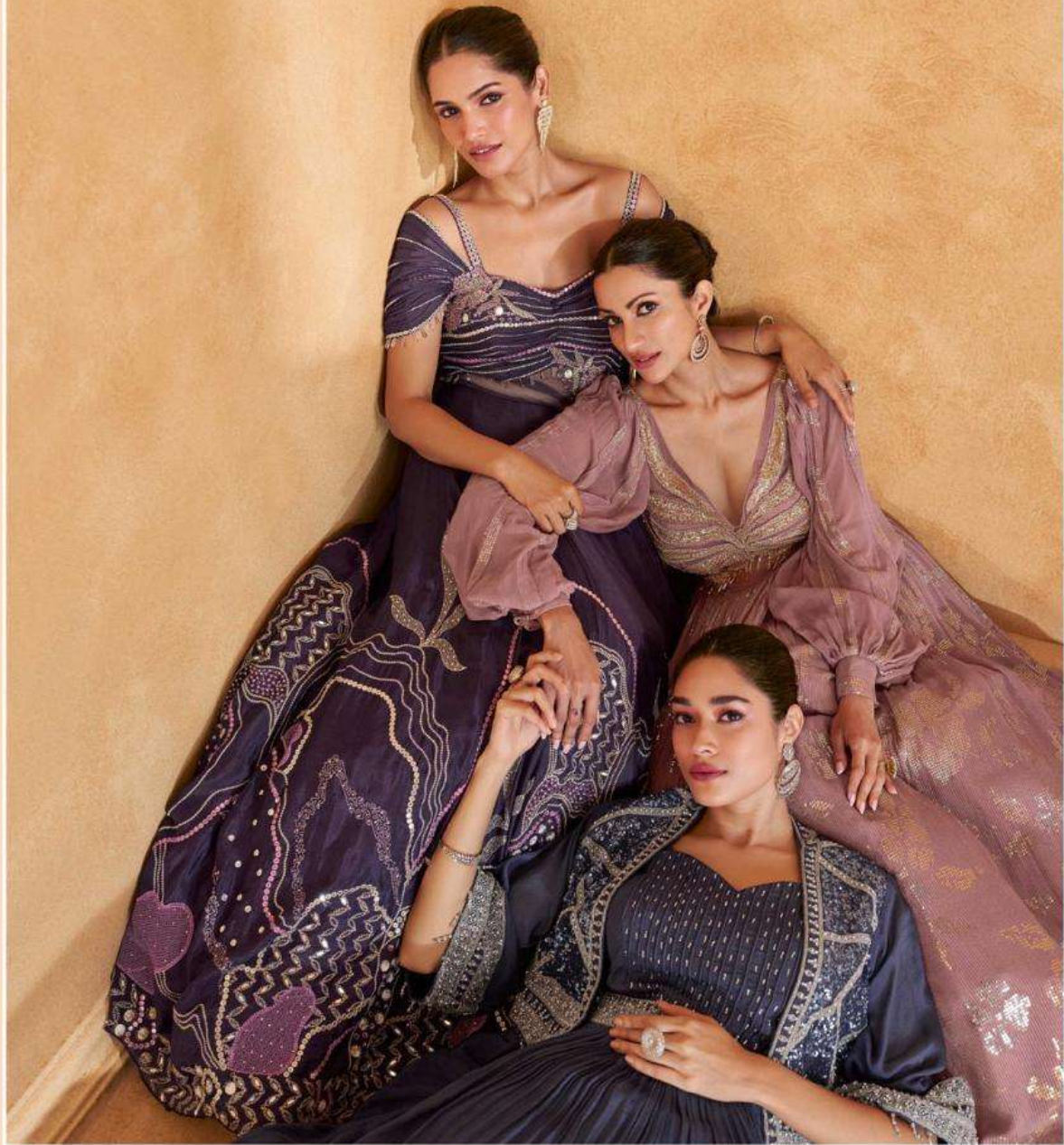


*Every creation was classic yet versatile with a modern touch given even the most traditional garment while retaining its richness of embroidery, detailing & textures*

*Style  
Eternal*

A breath taking array of fine detailing & intricate design inspired by Indian culture.....

  
**SAYURI**<sup>®</sup>  
Designer



# Adah

REFINING THE FUTURE OF FASHION





She wears a crown built from her  
spine of inner strength and  
modesty with sparkling jewels to  
represent her each and every quality.

**D No - 5629**

