

DUAL MAGIC

SAYURI[®]
Designer



This traditional hue gets a whole new look

D NO-5683

ETHNIC

F U L F I L L Y O U R

G I R L I S H F A N T A -

S I E S W I T H A N

E M B E L L I S H E D

L O O K H E R E M U L T I

H U E D T H R E A D

W O R K , D E L I C A T E

N E T & S E Q U I N S

E N H A N C E T H E

B E A U T Y .



FASHIONABLE



The key is to contrast two elements so you don't end
up over doing the feminine quotient

”



SAYURI[®]
Designer

ETHNIC



1 23456 78901 2



DUAL MAGIC

SAYURI[®]
Designer



This traditional hue gets a whole new look

D NO-5683









R E T R O



SAYURI[®]
Designer

Embrace one of the purest trends this season

D NO-5682

SPRING BLOOM



Creating new style & design everyday D NO-5683



LOTUS LAND

SAYURI[®]
Designer



Embrace one of the purest trends this season

D NO-5681



5681



5682



5683

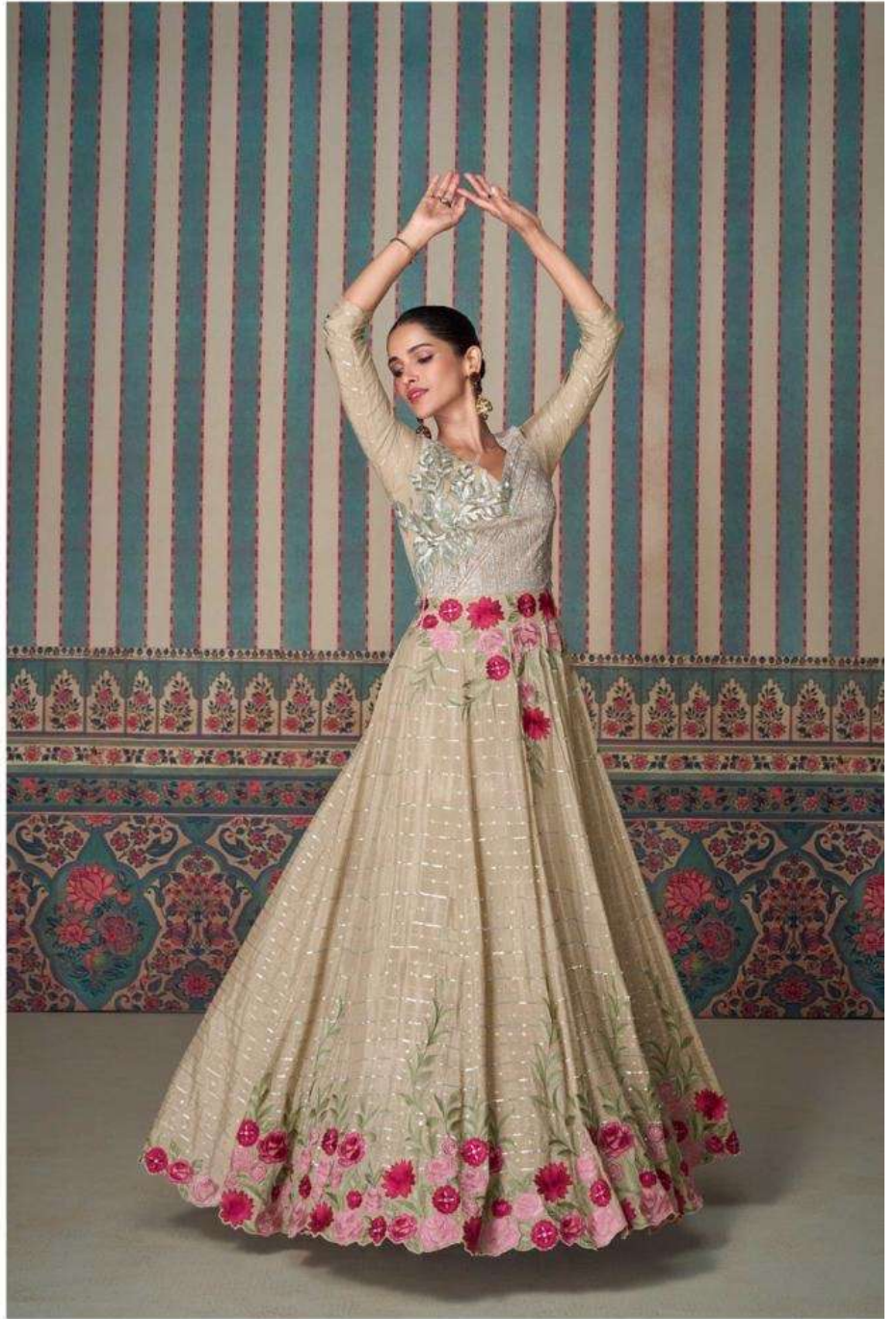


SAYURI[®]
Designer

ETHNIC

SAYURI®
Designer

STYLE ICON



Elegance is the only beauty that never fades

D NO-5681