

त्रिराथ

स्वरा







त्रिराथ
THE TRADITION

स्वरा

TR-10493




त्रिराथ
THE TRADITION

स्वरा

TR-10487


त्रिराथ
THE TRADITION

स्वरा

TR-10489



A woman is standing in a grand, arched hallway, wearing a light pink saree with intricate gold floral patterns. She is adorned with a heavy gold necklace, matching earrings, and bangles. The hallway features arched doorways, wall-mounted lamps, and a "KEEP SILENT" sign. The lighting is warm and dramatic, highlighting the textures of the saree and the architecture.

TRIRATH
THE TRADITION

स्वरा

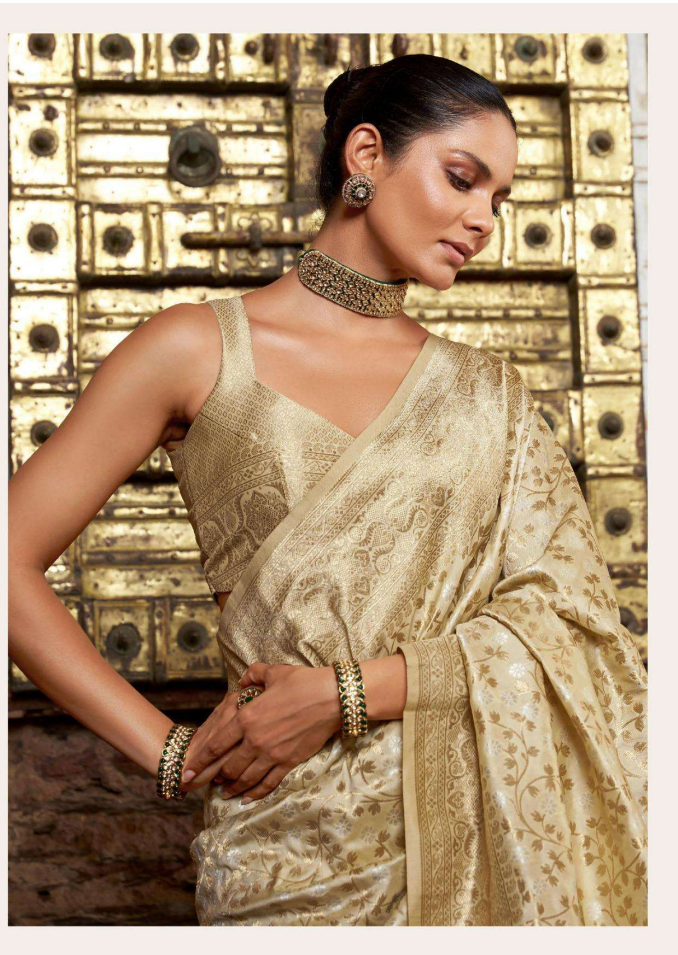
TR-10490

A woman is standing in a rustic, stone-walled setting. She is wearing a gold saree with intricate floral and geometric patterns. She is also wearing a gold choker, earrings, and a bracelet. Her right hand is resting on a wooden pillar, and her left hand is on her hip. The background features a stone wall and a wooden door with intricate carvings.

त्रिराथ
THE TRADITION

स्वरा

TR-10492



स्वरा


त्रिराथ
THE TRADITION




त्रिराथ
THE TRADITION

स्वरा

TR-10491





त्रिराथ
TRIRATH

TR-10493








त्रिराथ
THE TRADITION

स्वरा

TR-10488



TRIRATH

स्वरा

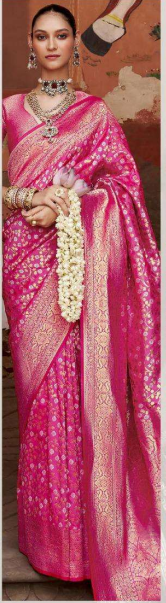




त्रिराथ
THE TRADITION

स्वरा

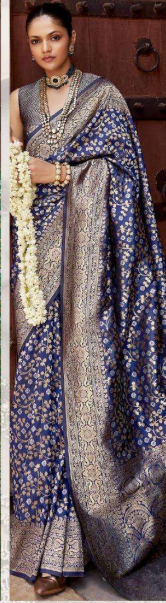
TR-10494



TR-10487



TR-10488



TR-10489



TR-10490



TR-10491



TR-10492



TR-10493



TR-10494

