

# VIBRANT VIOLET VISION



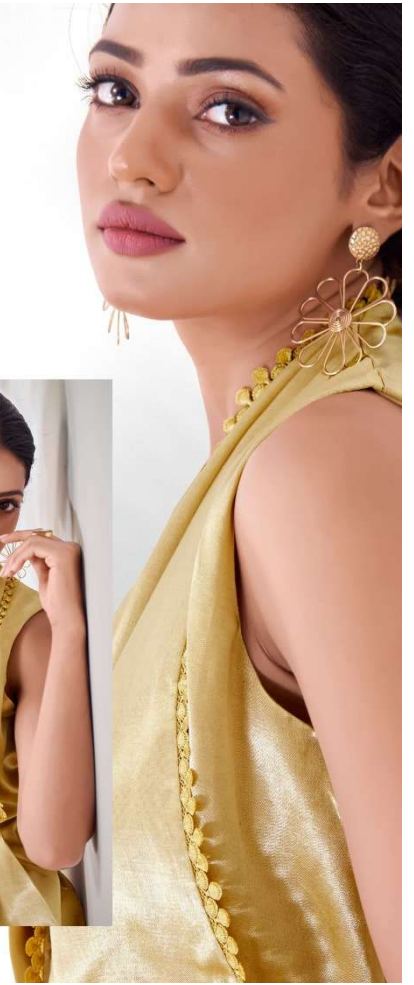
# GOLDEN GLAMOUR



**DESCRIPTION :**  
Step into the spotlight with our golden Gaji Silk fabric jacket. The sleeveless design and detailed edging exude sophistication, making it perfect for both day and night events. It took 8 hours to stitch this master piece.

**STYLING TIPS :**  
Pair with white trousers for a chic look.  
Add minimalistic gold jewelry to enhance the elegance.  
Suitable for evening parties and festive occasions.

DRS-35



# URBAN ENSEMBLE

SEASON 2024

SKU	MAIN COLOUR	TOP FAB	SIZE	WORK	PRICE
DRS 31	PINK	PURE GAJI SILK	XS, S, M, L, XL, XXL	HANDWORK	1140/-(FLATE)+12%(GST)+SHIPPING
DRS 32	PURPLE	PURE GAJI SILK	XS, S, M, L, XL, XXL	HANDWORK	1250/-(FLATE)+12%(GST)+SHIPPING
DRS 33	NAVY BLUE	PURE GAJI SILK	XS, S, M, L, XL, XXL	HANDWORK	1025/-(FLATE)+12%(GST)+SHIPPING
DRS 34	MAROON	PURE GAJI SILK	XS, S, M, L, XL, XXL	HANDWORK	1195/-(FLATE)+12%(GST)+SHIPPING
DRS 35	BEIGE	PURE GAJI SILK	XS, S, M, L, XL, XXL	LACE	1025/-(FLATE)+12%(GST)+SHIPPING

TOTAL DESIGNS : 5 PCS

ALL RATES ARE FLATE NO DISCOUNT AND EXCLUSIVE OF GST AND SHIPPING

**DESCRIPTION :**

Our chocolate brown jacket with its deep hue and structured fit is ideal for making a bold statement. The full sleeves and unique brooch detail add a touch of drama. Collar is adorned in cut-dana's crafted by humans.

**STYLING TIPS :**

Team with white wide-leg pants to balance the look.

Opt for hoop earrings to complement the jacket's design.

Perfect for business meetings and semi-formal gatherings.



DRS-34

**RICH  
CHOCOLATE  
DELIGHT**



# GOLDEN GLAMOUR

DRS-35



**DESCRIPTION :**

Step into the spotlight with our golden Gaji Silk fabric jacket. The sleeveless design and detailed edging exude sophistication, making it perfect for both day and night events. It took 8 hours to stitch this master piece.

**STYLING TIPS :**

Pair with white trousers for a chic look.

Add minimalistic gold jewelry to enhance the elegance.

Suitable for evening parties and festive occasions.





**DESCRIPTION :**  
Embrace royal elegance with this blue Gaj Silk fabric jacket. The intricate embroidery and buttoned front make it a standout piece for any wardrobe. Bodice is completely hand embroidered and exchanged hand process 4 times.

**STYLING TIPS :**

Combine with white trousers to let the jacket shine.  
Wear with subtle pearl accessories for a classic touch.  
Ideal for cultural events and formal dinners.

**DRS-33**



**ROYAL BLUE  
BEAUTY**



**RICH  
CHOCOLATE  
DELIGHT**

DRS-34

**DESCRIPTION :**

Our chocolate brown jacket with its deep hue and structured fit is ideal for making a bold statement. The full sleeves and unique brooch detail add a touch of drama. Color is all in cut-dana's crafted by humans.

**STYLING TIPS :**

Team with white wide-leg pants to balance the look.

Opt for hoop earrings to complement the jacket's design.

Perfect for business meetings and semi-formal gatherings.





**DESCRIPTION :**  
Embrace royal elegance with this blue Gaj Silk fabric jacket. The intricate embroidery and buttoned front make it a standout piece for any wardrobe. Bodice is completely hand embroidery and exchanged hand process 4 times.

**STYLING TIPS :**  
Combine with white trousers to let the jacket shine.  
Wear with subtle pearl accessories for a classic touch.  
Ideal for cultural events and formal dinners.

**DRS-33**



## ROYAL BLUE BEAUTY



## DRS-32

### DESCRIPTION :

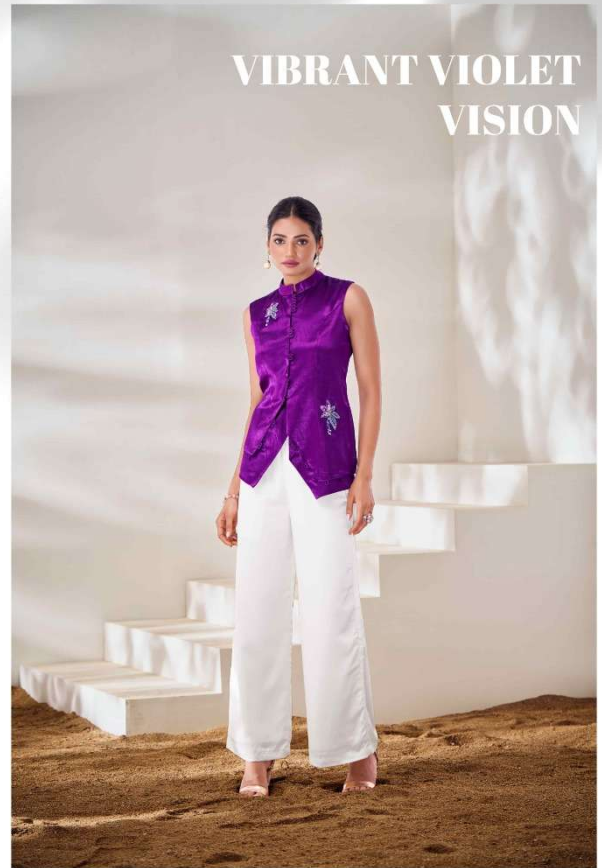
This violet jacket brings a splash of color to your ensemble. The high neck and embroidered details give it a regal look that's sure to turn heads. Intricate embroidery adorns the jacket, showcasing delicate floral patterns that add a touch of femininity and charm. The embroidery is meticulously hand-stitched, ensuring that each jacket is unique and of the highest quality. It took 10 hours to cut and stitch this delicate jacket.

### STYLING TIPS :

Match with white bottoms to keep the focus on the jacket.

Simple silver jewelry will enhance the overall appeal.

Best suited for weddings and festive celebrations.



## PASSIONATE PINK CHARM



DRS-31

**DESCRIPTION :**

Redefine boldness with our red Gajji Silk fabric jacket. The sleeveless cut and asymmetrical design creates a modern silhouette that's both daring and delightful. The asymmetrical hemline adds a modern twist to the traditional design, creating a flattering silhouette that enhances the wearer's natural curves.

**STYLING TIPS :**

Pair with white palazzo pants for a striking contrast.

Add red heels to complete the outfit.

Perfect for date nights and cocktail parties.



## VIBRANT VIOLET VISION



### DRS-32

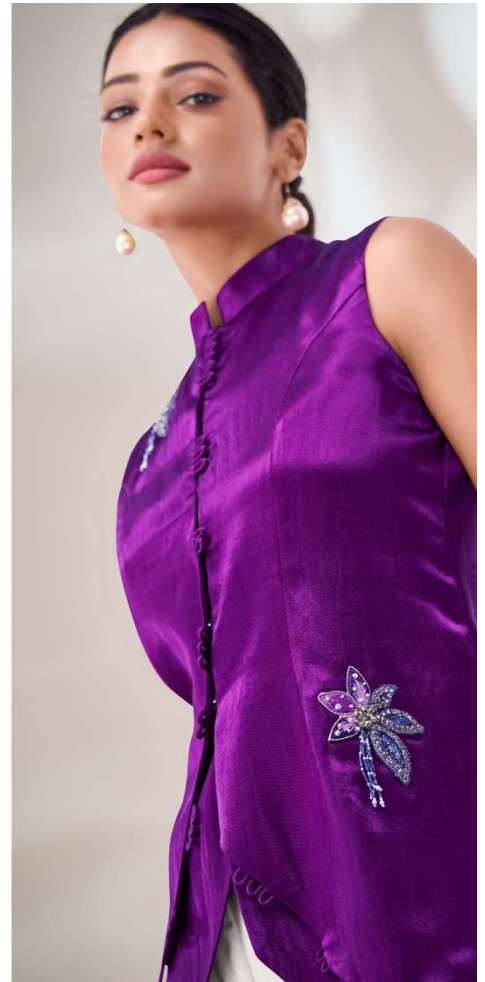
**DESCRIPTION :**  
This violet jacket brings a splash of color to your ensemble. The high neck and embroidered details give it a regal look that's sure to turn heads. Intricate embroidery adorns the jacket, showcasing delicate floral patterns that add a touch of femininity and charm. The embroidery is meticulously hand-stitched, ensuring that each jacket is unique and of the highest quality. It took 10 hours to cut and stitch this delicate jacket.

### STYLING TIPS :

Match with white bottoms to keep the focus on the jacket.

Simple silver jewelry will enhance the overall appeal.

Best suited for weddings and festive celebrations.



# URBAN ENSEMBLE



---

SEASON 2024

---



## OUR COLLECTION

---

Discover our exclusive collection of Gaji Silk fabric ethnic jackets, designed for the modern woman who appreciates timeless elegance and contemporary style. Each jacket is crafted with the utmost care, ensuring a perfect blend of luxury and comfort.



## CONCLUSION

---

Elevate your style with our range of fancy Gaji Silk fabric jackets. Each piece is designed to offer versatility, comfort, and unparalleled elegance. Whether you're attending a formal event or a festive celebration, these jackets will ensure you stand out in the crowd.

# PASSIONATE PINK CHARM



DRS-31

**DESCRIPTION :**

Redefine boldness with our red Gajji Silk fabric jacket. The sleeveless cut and asymmetrical design create a modern silhouette that's both daring and delightful. The asymmetrical hemline adds a modern twist to the traditional design, creating a flattering silhouette that enhances the wearer's natural curves.

**STYLING TIPS :**

Pair with white palazzo pants for a striking contrast.

Add red heels to complete the outfit.

Perfect for date nights and cocktail parties.

