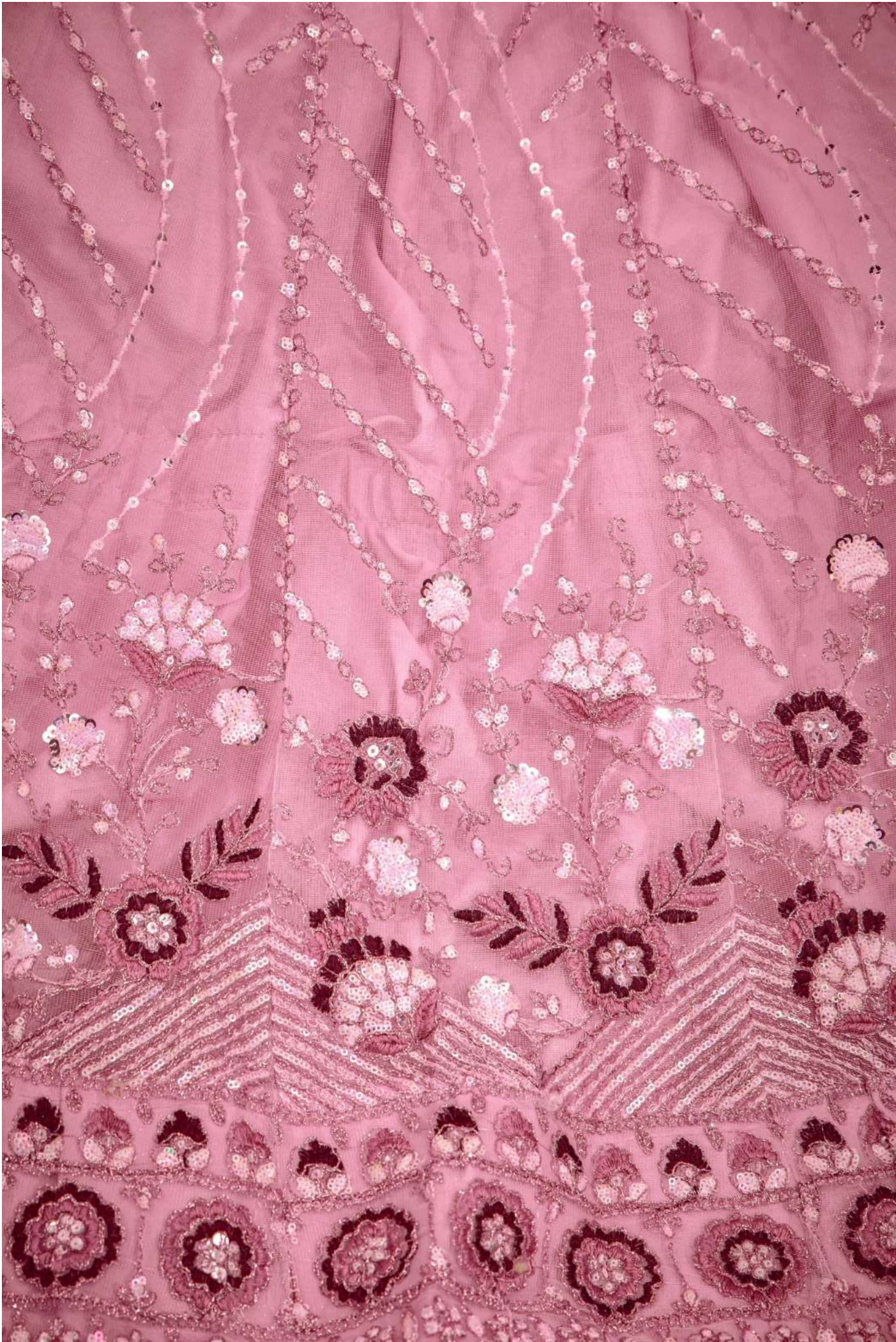


**HIRWA VOL -01**





















3001



3002



3003



3004

Design NO. (SKU)	Main Color	Lehenga Fabric	Choli Fabric	Dupatta Fabric	Size (Semi-Stitched)	Lehenga & Choli	Dupatta Work	Choli Length MTR	Lehenga Length MTR	Dupatta Length MTR	Weight
3001	MINT GREEN	BUTTERFLY NET WITH SATIN INNER	BUTTERFLY NET WITH SATIN INNER	BUTTERFLY NET	UPTO 42 BUST AND WAIST	Thread With Sequince Embroidered Work	Thread With Sequince Embroidered Work	1 MTR	42 INCH	2.30 MTR	1.5 KG
3002	PARTY PINK	BUTTERFLY NET WITH SATIN INNER	BUTTERFLY NET WITH SATIN INNER	BUTTERFLY NET	UPTO 42 BUST AND WAIST	Thread With Sequince Embroidered Work	Thread With Sequince Embroidered Work	1 MTR	42 INCH	2.30 MTR	1.5 KG
3003	DARK PEACH	BUTTERFLY NET WITH SATIN INNER	BUTTERFLY NET WITH SATIN INNER	BUTTERFLY NET	UPTO 42 BUST AND WAIST	Thread With Sequince Embroidered Work	Thread With Sequince Embroidered Work	1 MTR	42 INCH	2.30 MTR	1.5 KG
3004	TURQUOISE	BUTTERFLY NET WITH SATIN INNER	BUTTERFLY NET WITH SATIN INNER	BUTTERFLY NET	UPTO 42 BUST AND WAIST	Thread With Sequince Embroidered Work	Thread With Sequince Embroidered Work	1 MTR	42 INCH	2.30 MTR	1.5 KG









MD Lifestyle



3004







3002













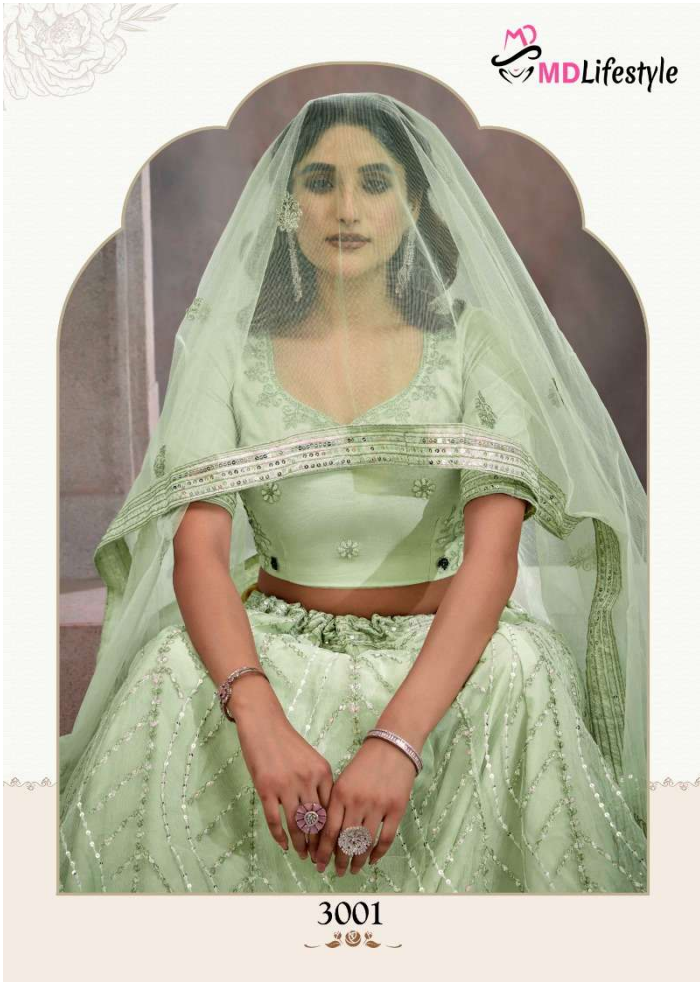


MD Lifestyle

3001











3002







**HIRWA VOL -01**