

HIRWA

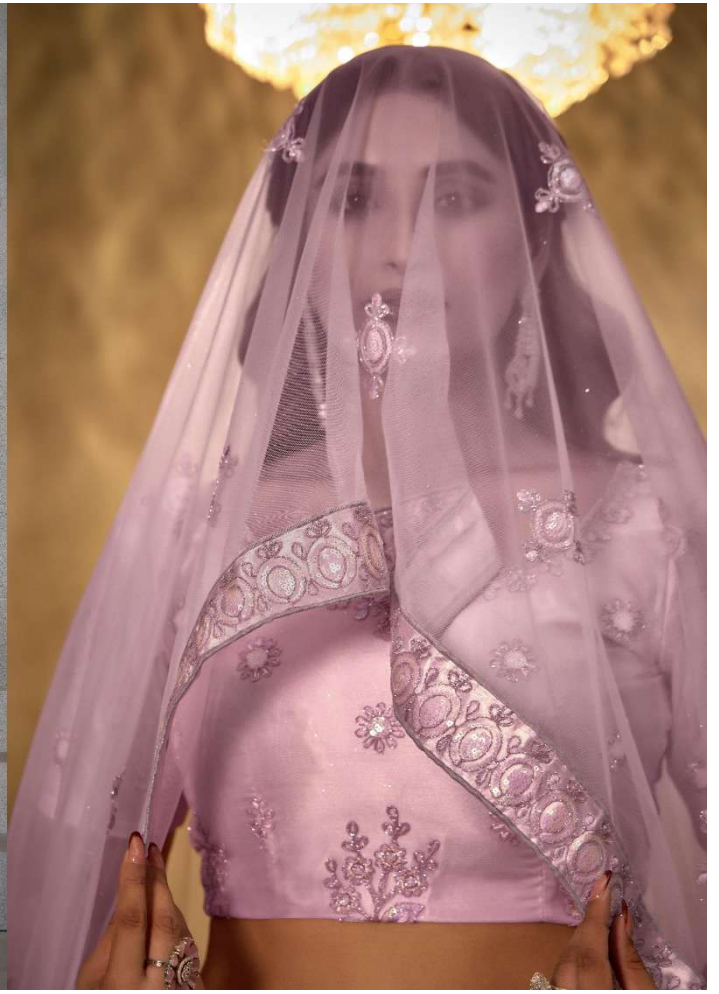
VOL-02

Design NO. (SKU)	Main Color	Lehenga Fabric	Choli Fabric	Dupatta Fabric	Size (Semi-Stitched)	Lehenga & Choli	Dupatta Work	Choli Length MTR	Lehenga Length MTR	Dupatta Length MTR	Weight
3011	LIGHT LAVENDER	BUTTERFLY NET WITH SATIN INNER	BUTTERFLY NET WITH SATIN INNER	BUTTERFLY NET	UPTO 42 BUST AND WAIST	Thread With Sequince Embroidered Work	Thread With Sequince Embroidered Work	1 MTR	42 INCH	2.30 MTR	1.5 KG
3012	PEACH	BUTTERFLY NET WITH SATIN INNER	BUTTERFLY NET WITH SATIN INNER	BUTTERFLY NET	UPTO 42 BUST AND WAIST	Thread With Sequince Embroidered Work	Thread With Sequince Embroidered Work	1 MTR	42 INCH	2.30 MTR	1.5 KG
3013	TURQUOISE	BUTTERFLY NET WITH SATIN INNER	BUTTERFLY NET WITH SATIN INNER	BUTTERFLY NET	UPTO 42 BUST AND WAIST	Thread With Sequince Embroidered Work	Thread With Sequince Embroidered Work	1 MTR	42 INCH	2.30 MTR	1.5 KG
3014	LIPGLOSS PINK	BUTTERFLY NET WITH SATIN INNER	BUTTERFLY NET WITH SATIN INNER	BUTTERFLY NET	UPTO 42 BUST AND WAIST	Thread With Sequince Embroidered Work	Thread With Sequince Embroidered Work	1 MTR	42 INCH	2.30 MTR	1.5 KG

MD Lifestyle



3014





 MD Lifestyle



3013



3011



3012



3013



3014



3012





3014



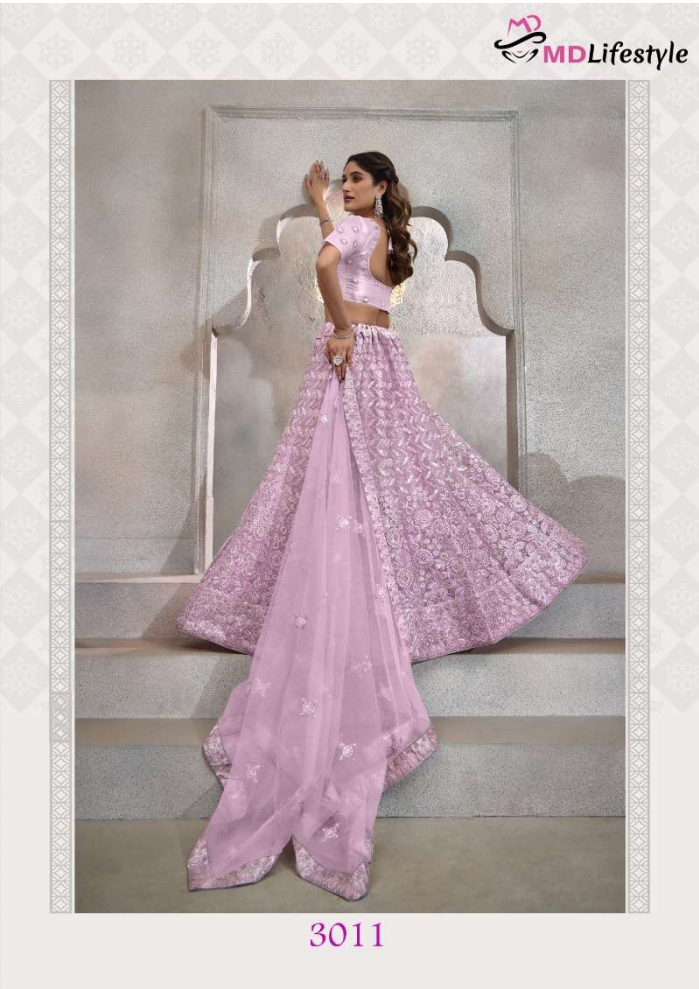


3011

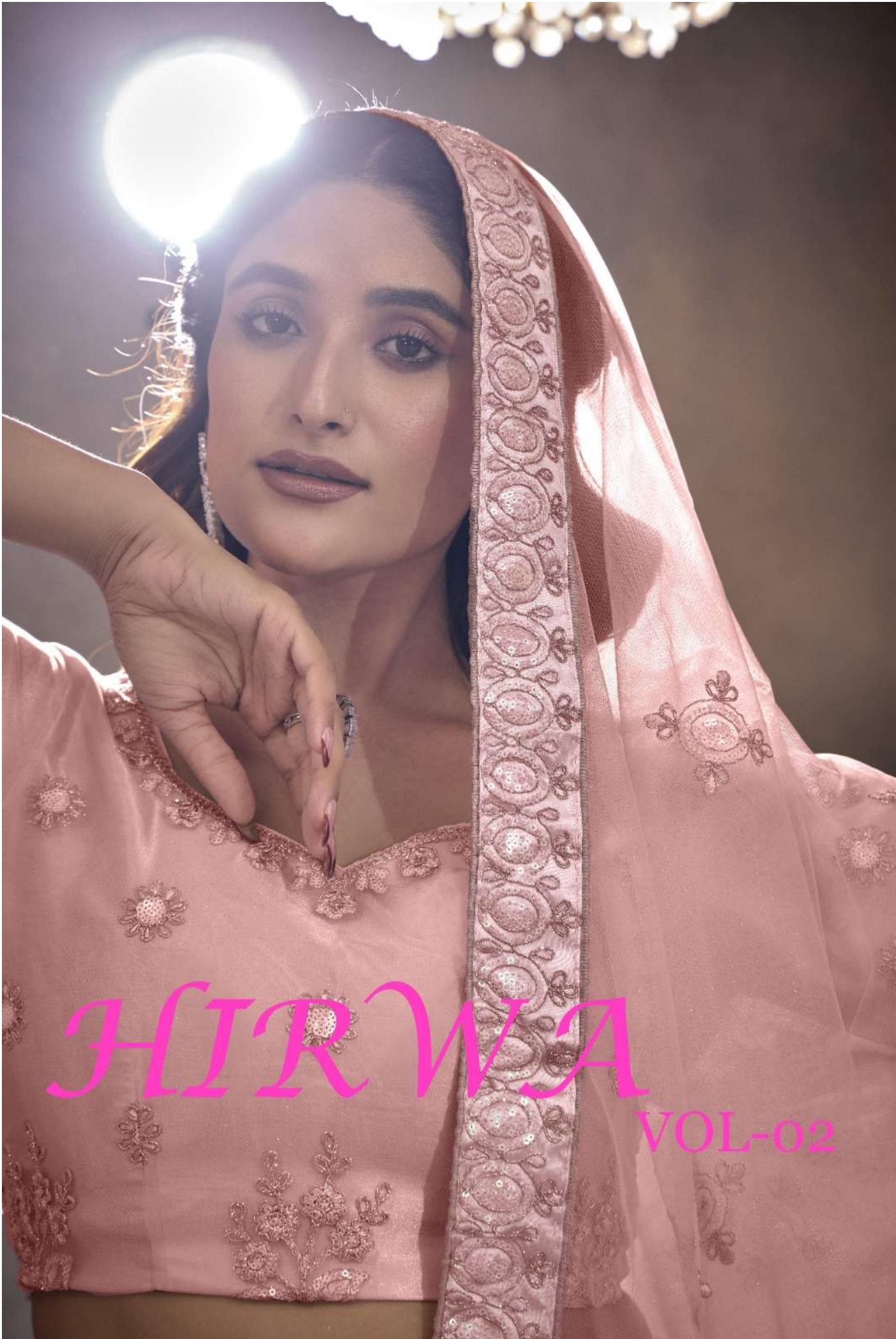




3012



3011



HIRWA

VOL-02