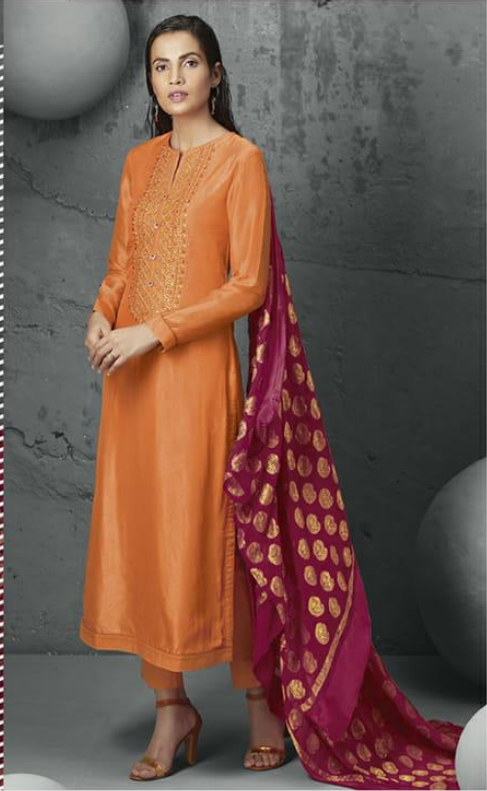
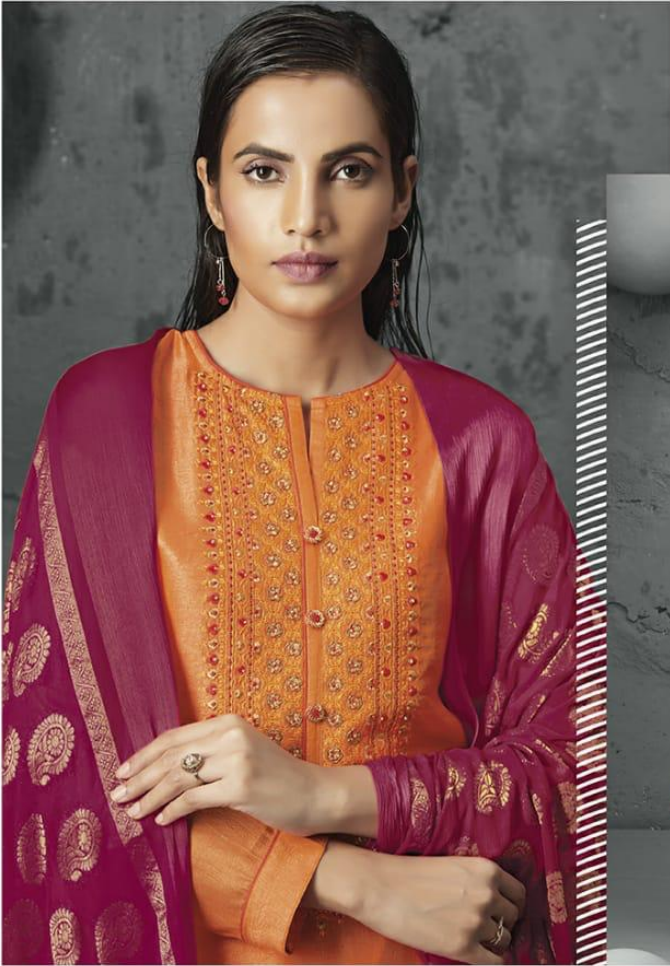


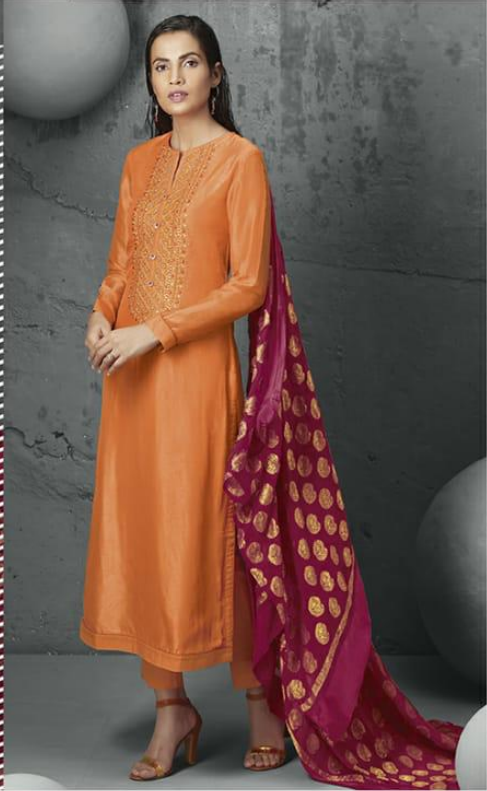
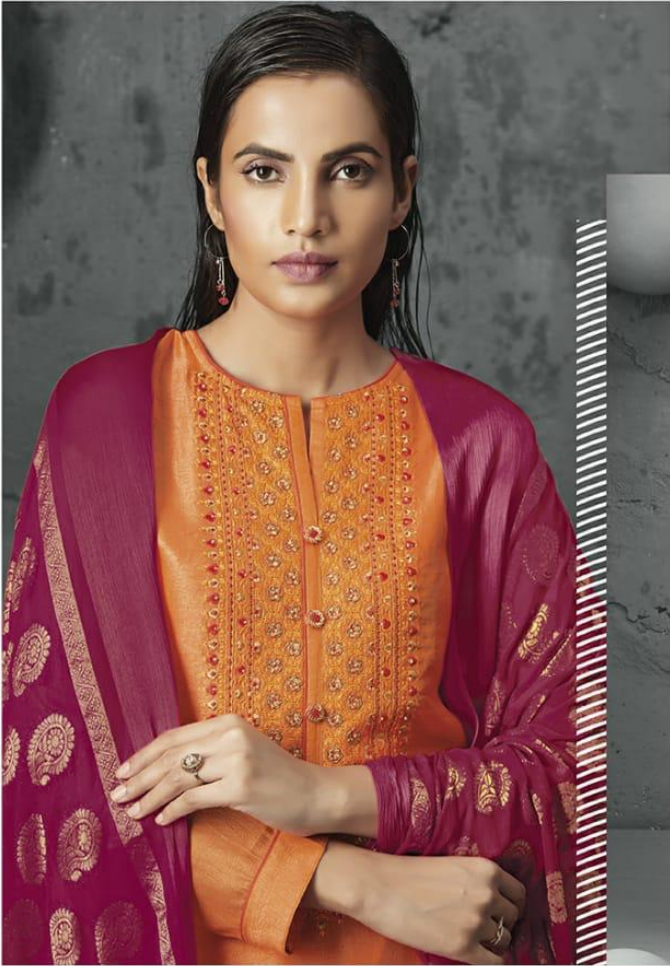


BAUGH - E - NOOR Design no - 140





BAUGH - E - NOOR Design no - 140





BAUGH - E - NOOR Design no - 120





RATE LIST

H S N CODE - 5408

DESIGN NO	DESCRIPTION	RATE
150 - 160	TOP - ZARI JACQUARD FRONT WITH EMBROIDERY & UPADA SILK BACK SLEEVE BOTTOM - COTTON SATIN DUPATTA - COTTON SILK HEAVY DIGITAL PRINT WITH FOIL PRINT	2195/-
100 - 120	TOP - PURE GEORJETTE WITH EMBROIDERY BOTTOM - COTTON SATIN DUPATTA - COTTON SILK HEAVY DIGITAL PRINTED	2195/-
101 - 111	TOP - UPADA SILK WITH EMBROIDERY & DAMAN SLEEVE MUKESH PRINT BOTTOM - COTTON SATIN DUPATTA - CHANDERY WITH MUKESH PRINT	2195/-
185 - 196	TOP - UPADA SILK WITH EMBROIDERY & COTTON SATIN PATTI BOTTOM - COTTON SATIN DUPATTA - CHANDERY WITH FOIL PRINT & COTTON SATIN PATTI	2195/-
126 - 140	TOP - UPADA SILK WITH EMBROIDERY & HAND WORK BOTTOM - COTTON SATIN DUPATTA - FANCY DUPATTA	2195/-
190 - 155	TOP - UPADA SILK FRONT MUKESH PRINT & UPADA SILK BACK & SLEEVE EMBROIDERY & MIRROR WORK BOTTOM - COTTON SATIN DUPATTA - COTTON SILK HEAVY WITH DIGITAL PRINTED	2195/-

Sales Office : Krishna Textile Market Nr. J.J. A/C Market Ringroad, Surat - 395002, Gujarat (INDIA)
 Domestic Enquiries | Mob: +91 98244 45366 International Enquiries | Mob: +91 99242 02279
 ethenic@sahibafabrics.com | www.sahibald.com



BAUGH - E - NOOR Design no - 196





BAUGH - E - NOOR

Design no - 101





BAUGH - E - NOOR



All accessories are for shoot purpose only



BAUGH - E - NOOR

Design no - 150





FROM START till the END



WWW.SAHIBALTD.COM



Sahiba Limited

ISO 9001: 2015

Manufactured by : Sahiba Limited

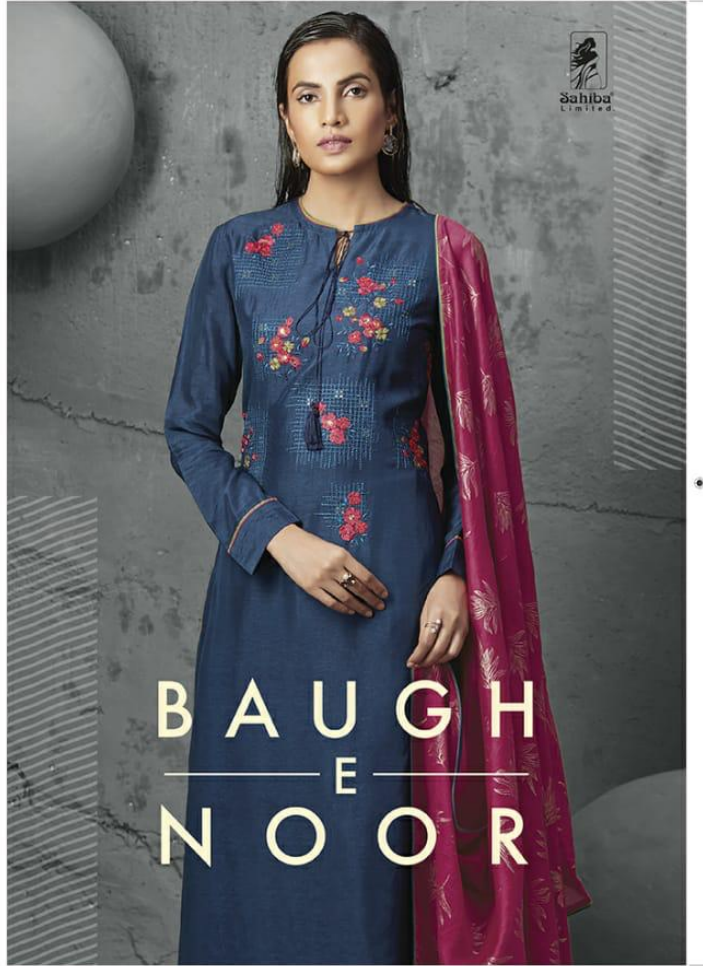
Sales Office: Krishna Textile Market Nr. J.J. A/C Market,
Ring Road, Surat- 395 002, Gujarat (INDIA)

Domestic Enquiries
Mob: +91 98244 45366

International Enquiries
Mob: +91 99242 02279

ethnic@sahibafabrics.com / www.sahibaltd.com

* complimentary copy, not for sale *



BAUGH
— E —
NOOR



BAUGH - E - NOOR

Design no - 100





Sahiba



Design no - 126



Design no - 160



Design no - 101



Design no - 150



Design no - 190



Design no - 196



Design no - 185



Design no - 155



Design no - 111



Design no - 100



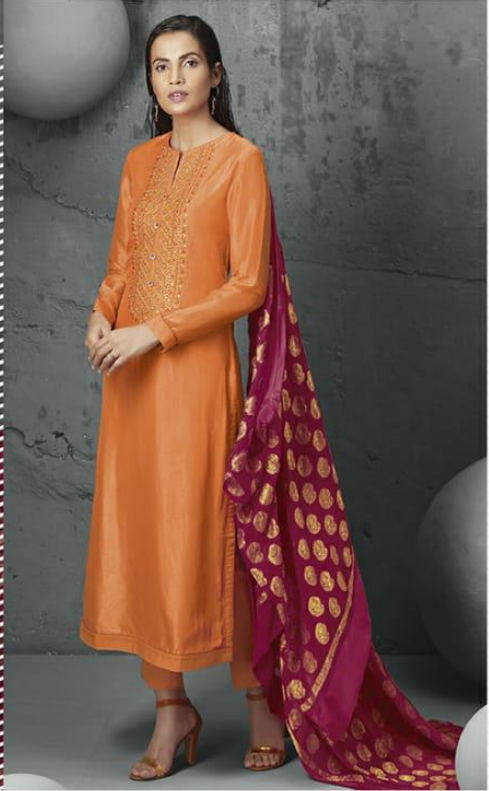
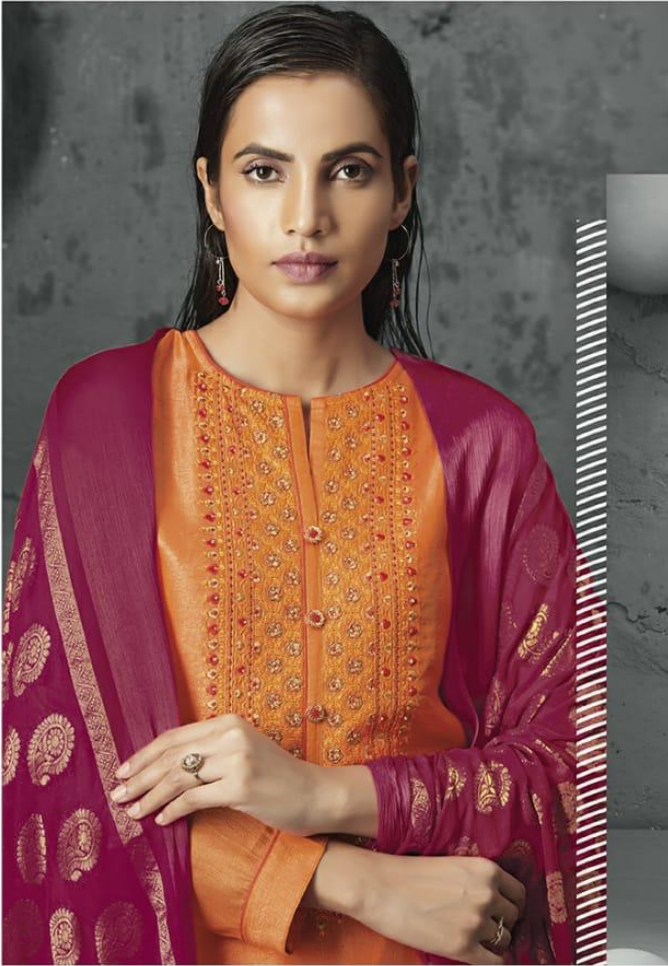
Design no - 120



Design no - 140



BAUGH - E - NOOR Design no - 140



STYLING: MOHAMED ALI 30/31

24/09/18 11:18



BAUGH - E - NOOR

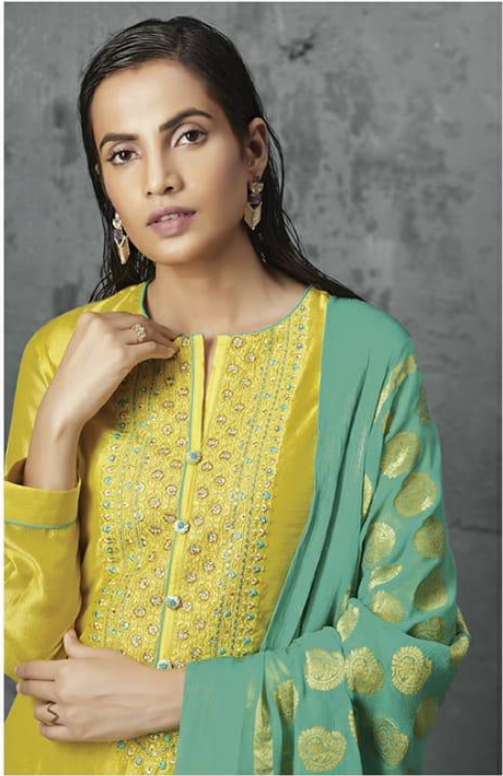
Design no - 155





BAUGH - E - NOOR

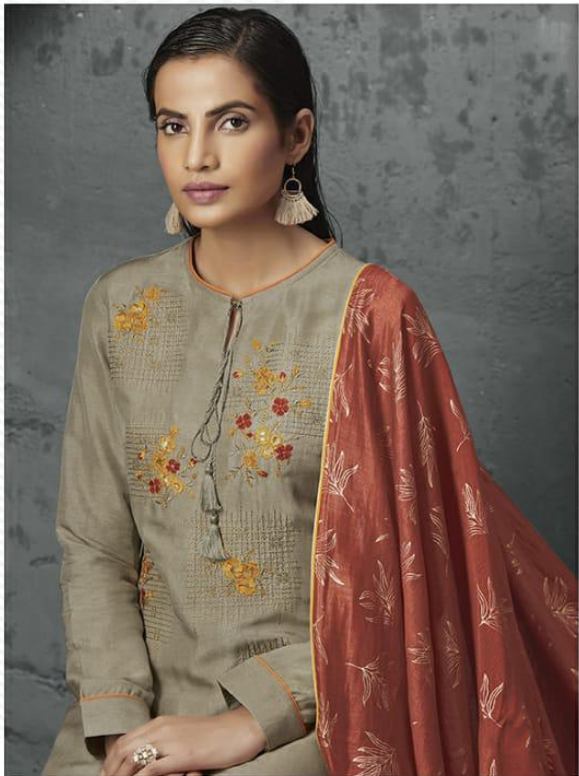
Design no - 126





BAUGH - E - NOOR

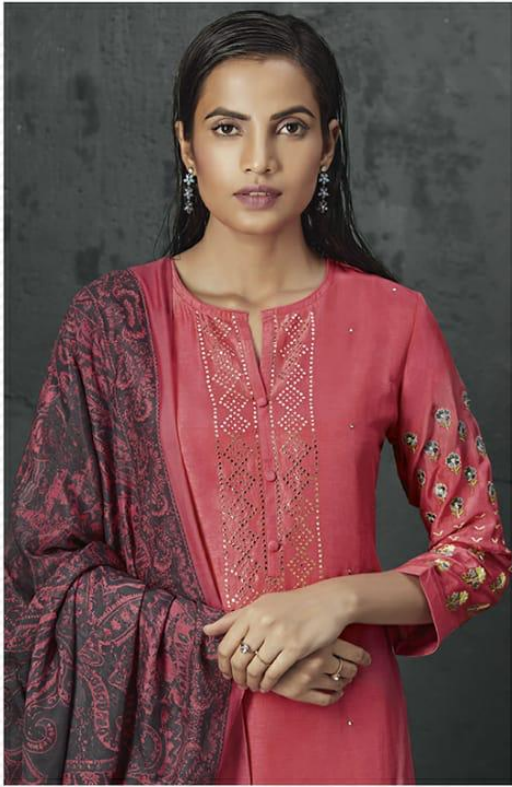
Design no - 185





BAUGH - E - NOOR

Design no - 190



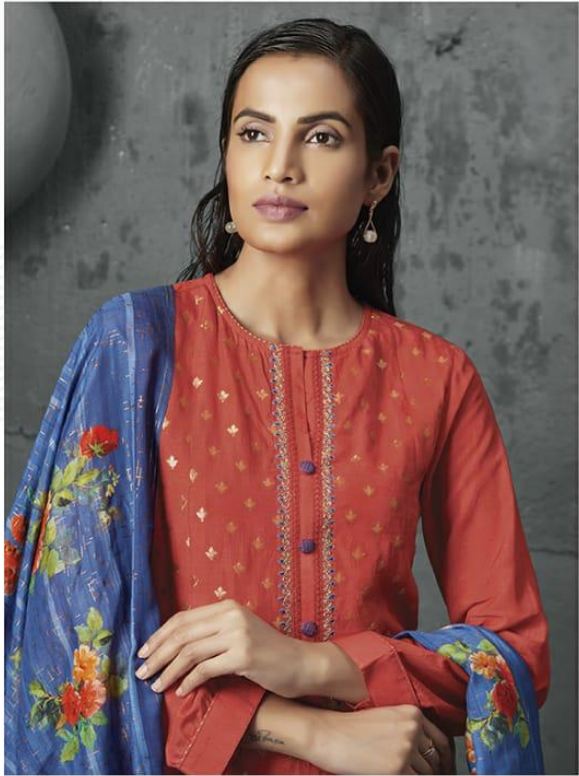


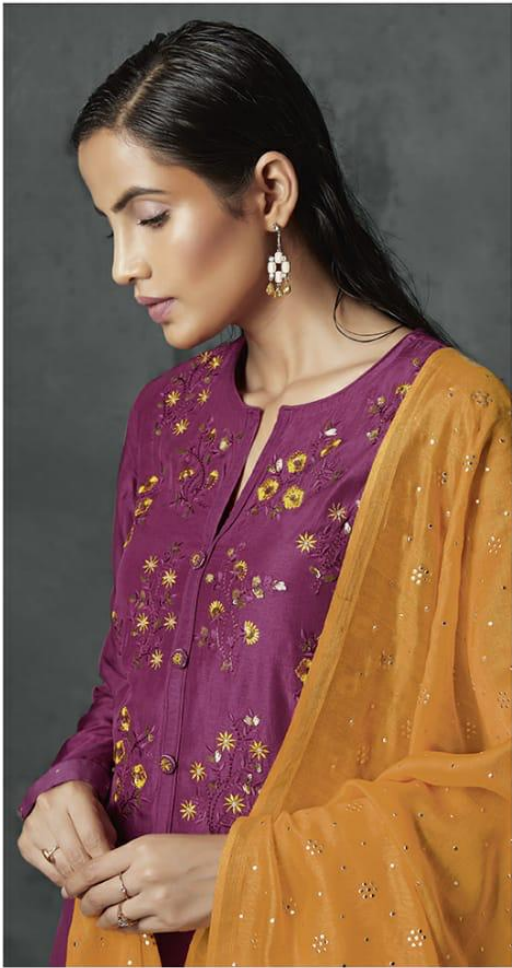
BAUGH - E - NOOR

BAUGH
— E —
NOOR



BAUGH - E - NOOR Design no - 160





RIGHT SIDE VIEW (1) 111



BAUGH - E - NOOR Design no - 111



LEFT SIDE VIEW (1) 111