









We're excited to announce



Has Launched New Catalog

**PATIALA
HOUSE**

Vol-65

BOOK NOW

Fabrics Details

TOP :- Glace Cotton

BOTTOM :- Rayon With Work

DUPATTA :- Nazneen Work With
Four Side Less

No.of Design :- 12

Dispatching :- 5 to 6 Days Later

Booking Started From Now.....

Order Yours Soon.....





D.NO 4301



D.NO 4302



D.NO 4303



D.NO 4307



D.NO 4308



D.NO 4309



D.NO 4304



D.NO 4305



D.NO 4306



D.NO 4310



D.NO 4311



D.NO 4312



D.NO 4303



THIS SEASON IS GIVING TO BE BRIGHT & COLORFUL



D.NO 4312





**PATIALA
HOUSE VOL-65**



A HOUSE OF ETHNIC DESIGNER
SAREE, SUITS & LEHENGAS

COMPLIMENTARY COPY / NOT FOR SALE





CATALOG NAME : **Patiala House Vol - 65**

PIECES : **12**

	FABRICS DETAILS (Material Only)
TOP	GLACE COTTON
BOTTOM	RAYON WITH WORK
DUPATTA	NAZNEEN WORK WITH FOUR SIDE LESS



BRILLIANT HUES & LUSTROUS TEXTURES GIVE YOU A NEW MAKEOVER THIS SEASON.





D.NO 4311



MAKE A BRIGHT NEW BEGINNING TO THIS SEASON.



D.NO 4306

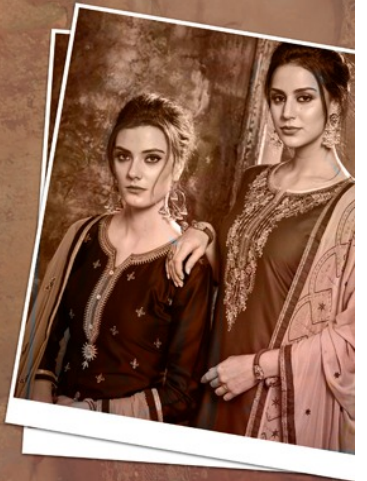




D.NO 4304



D.NO 4307



CELEBRATE THIS SEASON WITH
COLOR CONTRASTS THAT PROMISE
TO SHOCK THE SUN & REVEL
IN THE SURPRISE OF THIS
HOT NEW TREND.



D.NO 4305



THIS TRADITIONAL HUE GETS A WHOLE NEW LOOK





D.NO 4305



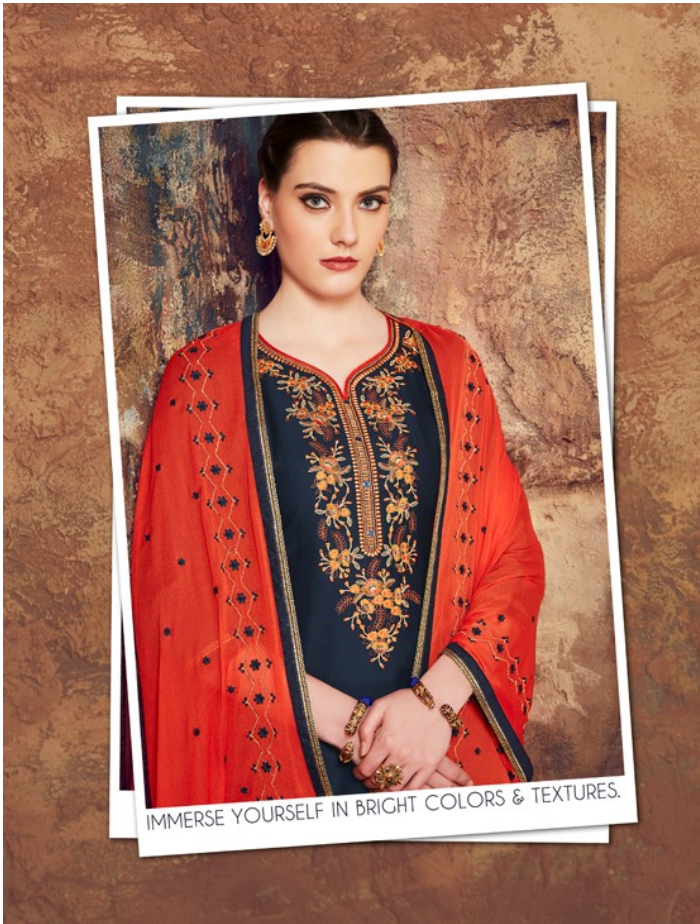
THIS TRADITIONAL HUE GETS A WHOLE NEW LOOK



**PATIYALA
HOUSE**
VOL-65

The collection was a perfect
blend of Indian silhouettes &
contemporary style





IMMERSE YOURSELF IN BRIGHT COLORS & TEXTURES.



D.NO 4302