

Heer's

MOHABBAT

MOHABBAT

TOP

PURE MUSLIN WITH DIGITAL PRINT AND DORI EMBROIDERY ON NECKLINE, ORGANZA SCALLOPED DORI EMBROIDERY ON SLEEVE AND HEMLINE

BOTTOM

PURE MUSLIN WITH ORGANZA SCALLOPED DORI EMBROIDERY

DUPATTA

PURE CHINON WITH DIGITAL PRINT AND ORGANZA SCALLOPED DORI EMBROIDERY BORDER

HEER
BY LINDA





0446 | [View Product Details](#) | [View Product Details](#) | [View Product Details](#)

HEER



3444 *Light blue, long-sleeved, floor-length dress with intricate floral embroidery and a matching shawl.*





HEER

A beautiful collection of dresses, a little piece of art
with every stitch and every detail.

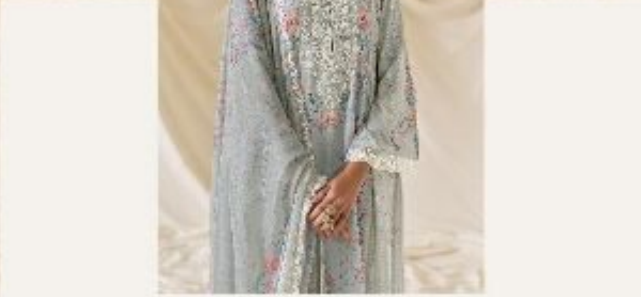
9444

HEER



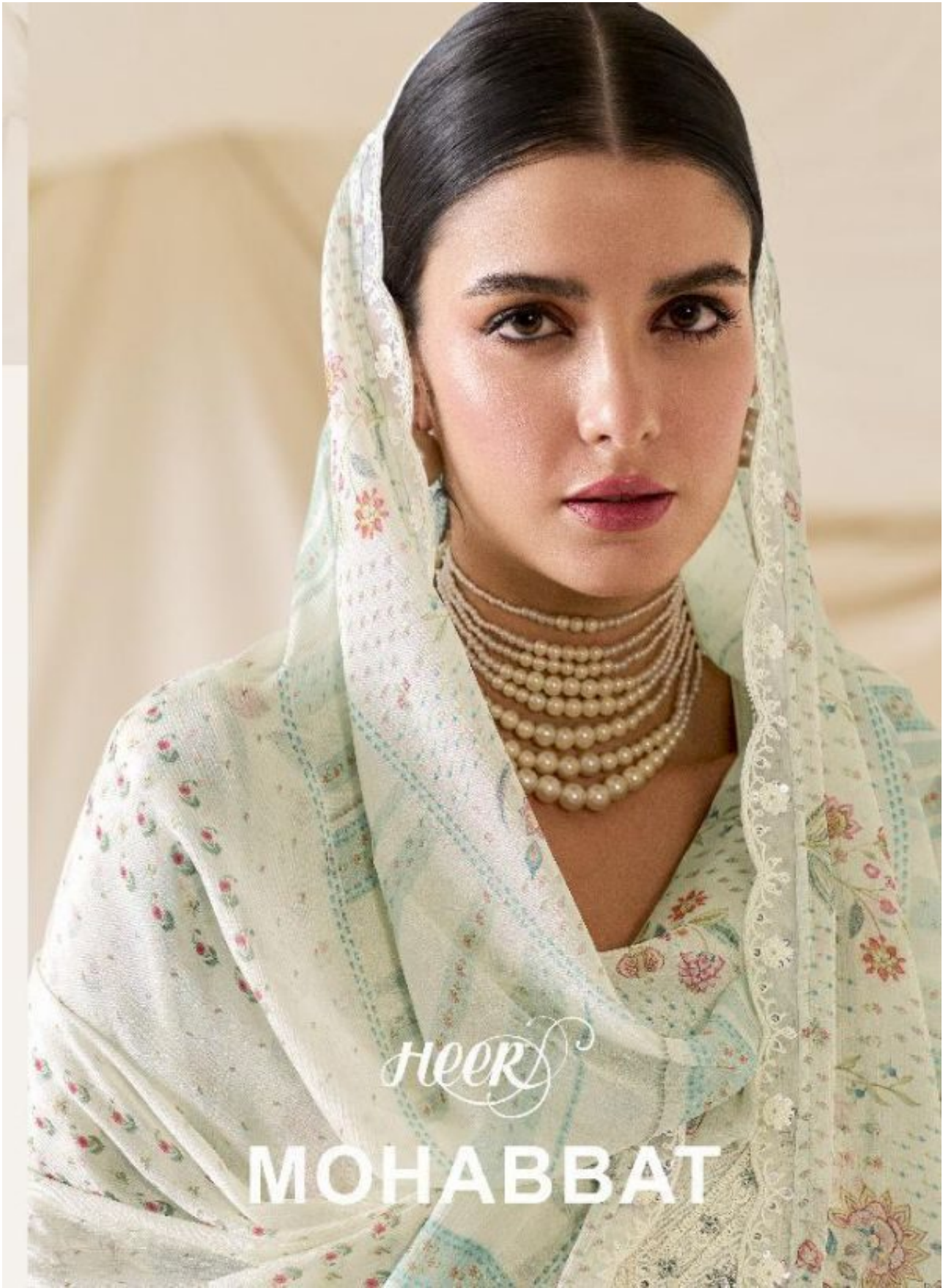
HEER 9445





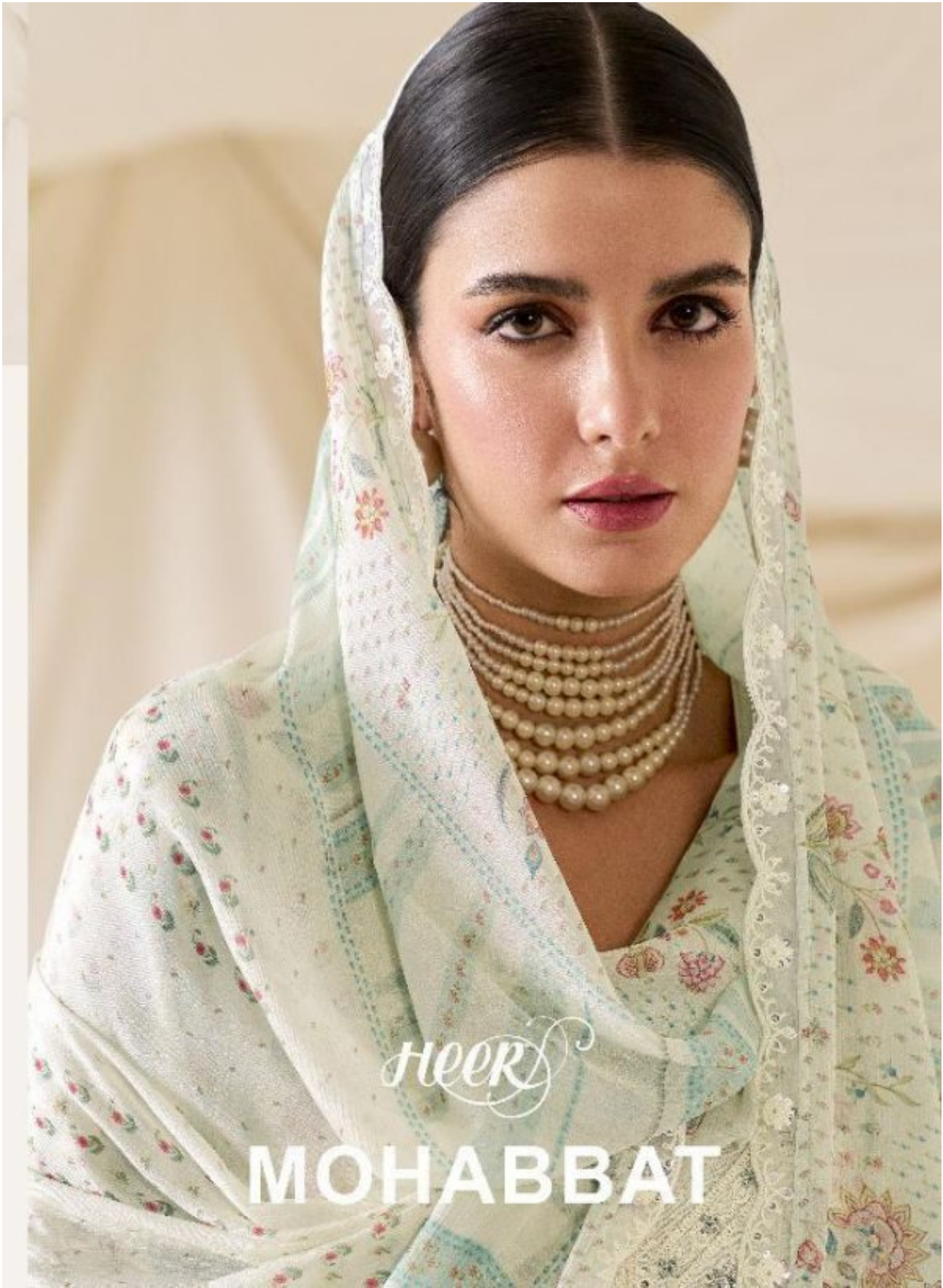
كافتان بلون أزرق فاتح مزينة بالترصيع
اللون: أزرق فاتح - 8442

8442



HEER

MOHABBAT



HEER

MOHABBAT





HEER

www.heer.com | 9441





HEER

9441 | *The New Line for Festive and Occasional Wear*
with the best of fabrics

MOHABBAT

TOP

PURE MUSLIN WITH DIGITAL PRINT AND DORI EMBROIDERY ON NECKLINE, ORGANZA SCALLOPED DORI EMBROIDERY ON SLEEVE AND HEMLINE

BOTTOM

PURE MUSLIN WITH ORGANZA SCALLOPED DORI EMBROIDERY

DUPATTA

PURE CHINON WITH DIGITAL PRINT AND ORGANZA SCALLOPED DORI EMBROIDERY BORDER

HEER
BY FARAZ





*HEER*TM

www.heer.com | 9443

HEER



9441

9442

9443

MOHABBAT



9444

9445

9446