

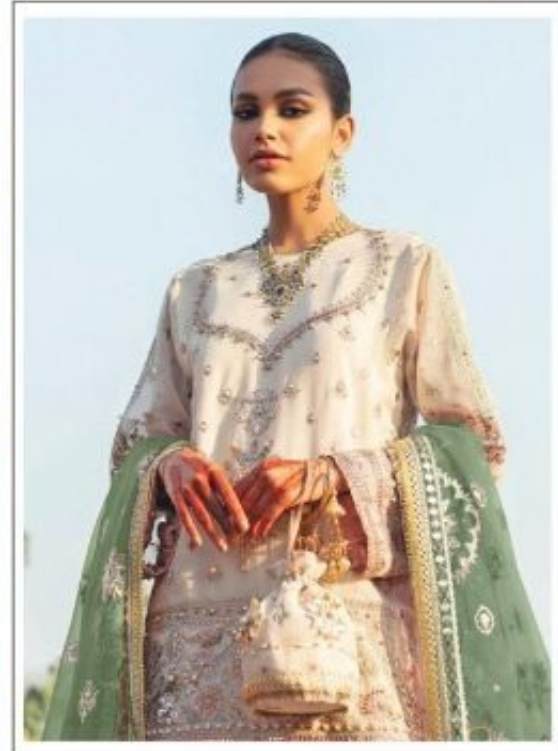
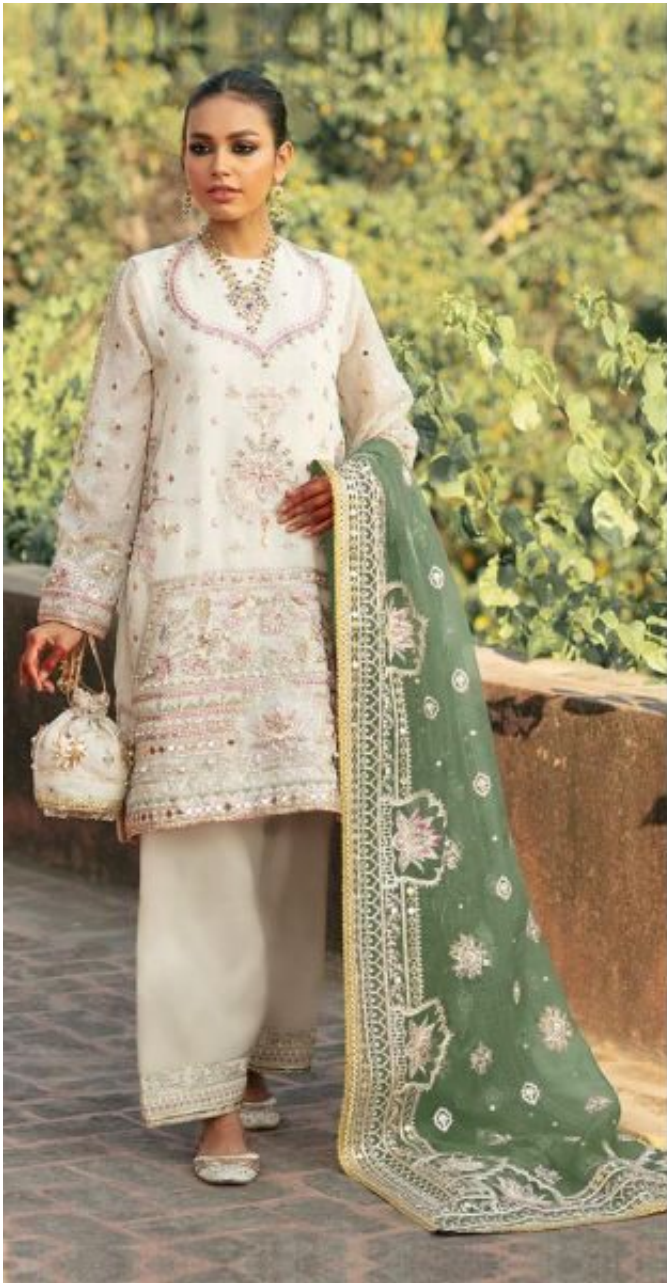
**TOP- HEVY ORNGZA WITH HEVY EMBROIDERY
WITH DIMOND MIRROR WRO**

M-197 B

BOTTOM/INNER- SANTOON WITH WORK

**DUPATTA/NET- HEVY ORNGZA WITH
EMBROIDERY WITH DIMOND MIRROR
WORK FOUR SIDE LESS**

- ☑ DRY CLEAN ONLY.
- ✗ DO NOT USE ANY BLEACH OR STAIN REMOVING CHEMICAL.
- ☑ IRON THE FABRIC AT MODERATE TEMPERATURE.



TOP- HEVY ORNGZA WITH HEVY EMBROIDERY WITH DIMOND MIRROR WRO

M-197 A

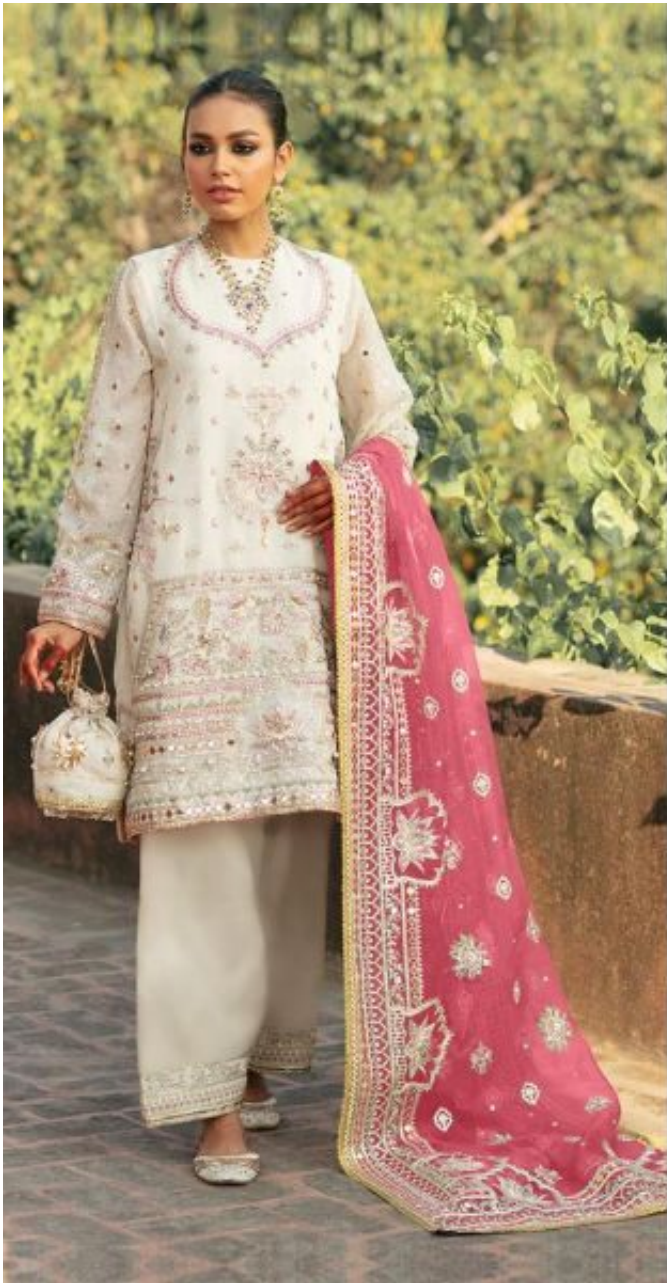
BOTTOM/INNER- SANTOON WITH WORK

DUPATTA/NET- HEVY ORNGZA WITH EMBROIDERY WITH DIMOND MIRROR WORK FOUR SIDE LESS

- ☉ DRY CLEAN ONLY.
- ✘ DO NOT USE ANY BLEACH OR STAIN REMOVING CHEMICAL.
- ☉ IRON THE FABRIC AT MODERATE TEMPERATURE.



Small text block, likely a product description or price tag, located in the bottom right corner of the inset images.



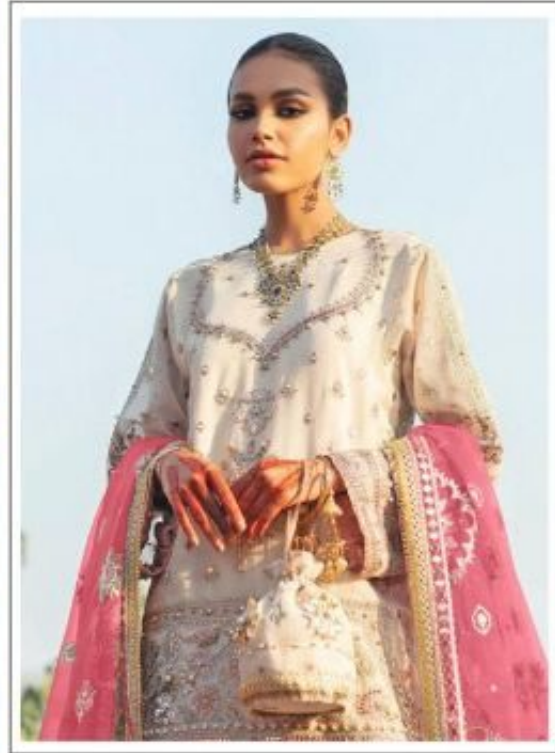
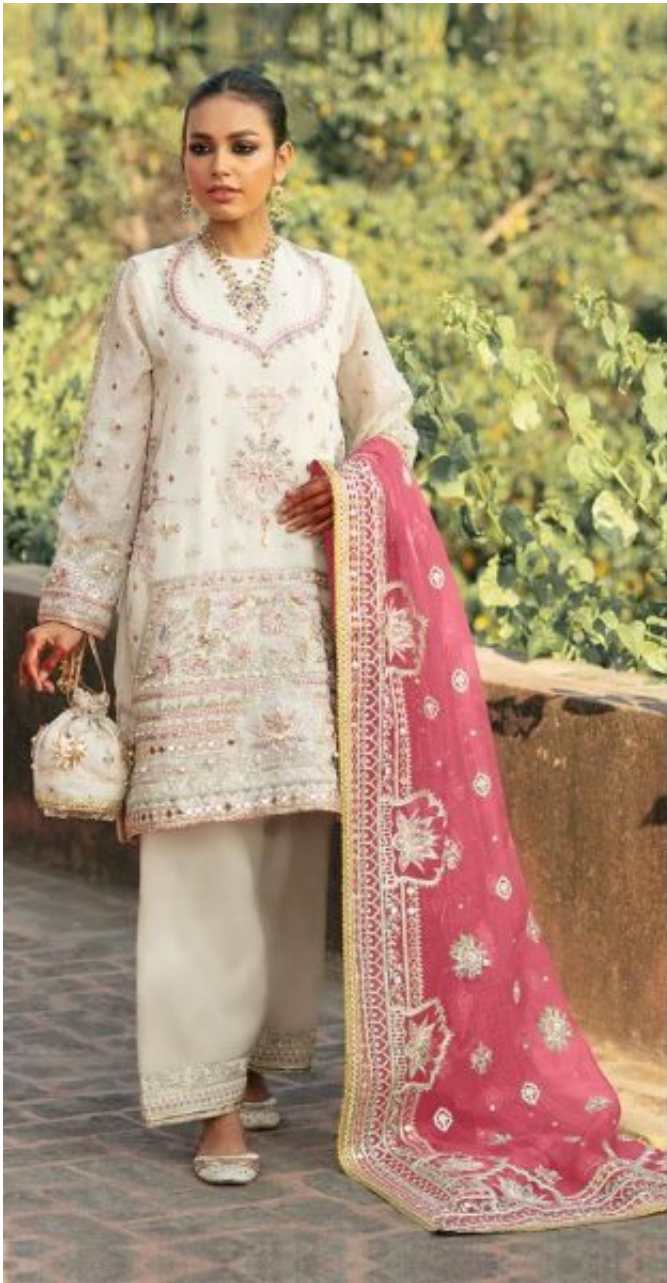
**TOP- HEVY ORNGZA WITH HEVY EMBROIDERY
WITH DIMOND MIRROR WRO**

M-197 B

BOTTOM/INNER- SANTOON WITH WORK

**DUPATTA/NET- HEVY ORNGZA WITH
EMBROIDERY WITH DIMOND MIRROR
WORK FOUR SIDE LESS**

- ☑ DRY CLEAN ONLY.
- ✗ DO NOT USE ANY BLEACH OR STAIN REMOVING CHEMICAL.
- ☑ IRON THE FABRIC AT MODERATE TEMPERATURE.



**TOP- HEVY ORNGZA WITH HEVY EMBROIDERY
WITH DIMOND MIRROR WRO**

M-197 B

BOTTOM/INNER- SANTOON WITH WORK

**DUPATTA/NET- HEVY ORNGZA WITH
EMBROIDERY WITH DIMOND MIRROR
WORK FOUR SIDE LESS**

- ☑ DRY CLEAN ONLY.
- ✗ DO NOT USE ANY BLEACH OR STAIN REMOVING CHEMICAL.
- ☑ IRON THE FABRIC AT MODERATE TEMPERATURE.

