



Jantara
Vol - 470


JOH RIVAAJ

JANTARA		
SR NO.	D NO.	RATE
1	jantara-47001	1795/-
2	jantara-47002	1795/-
3	jantara-47003	1795/-
4	jantara-47004	1795/-
5	jantara-47005	1795/-
6	jantara-47006	1795/-
7	jantara-47007	1795/-
8	jantara-47008	1795/-
9	jantara-47009	1795/-



Jantara
Vol - 470



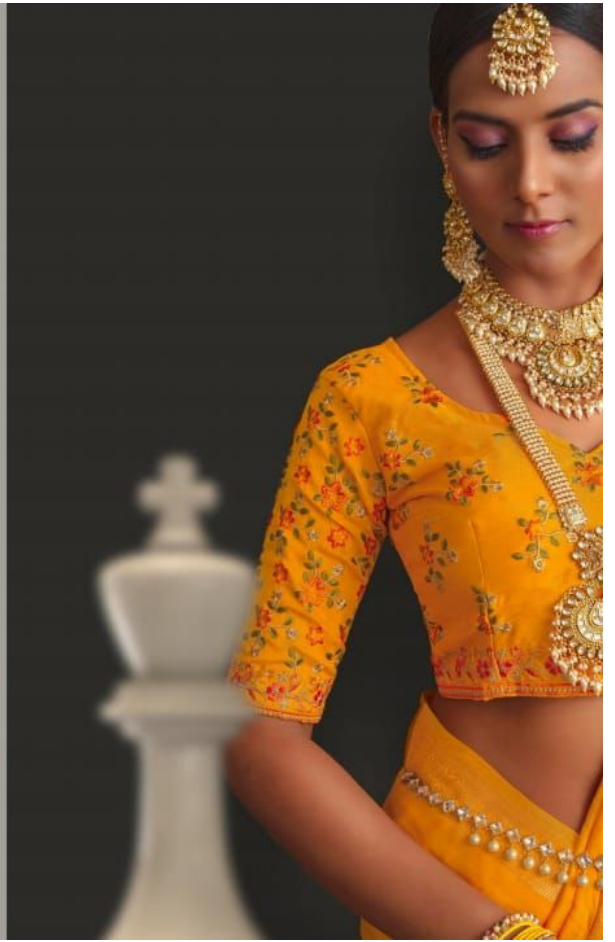
Jantara
Vol - 470

JR
JOH RIVAAJ



SENSIBLE COLOURS

The design and the color palette are the most important factors in the design of the saree. The design and the color palette are the most important factors in the design of the saree. The design and the color palette are the most important factors in the design of the saree.

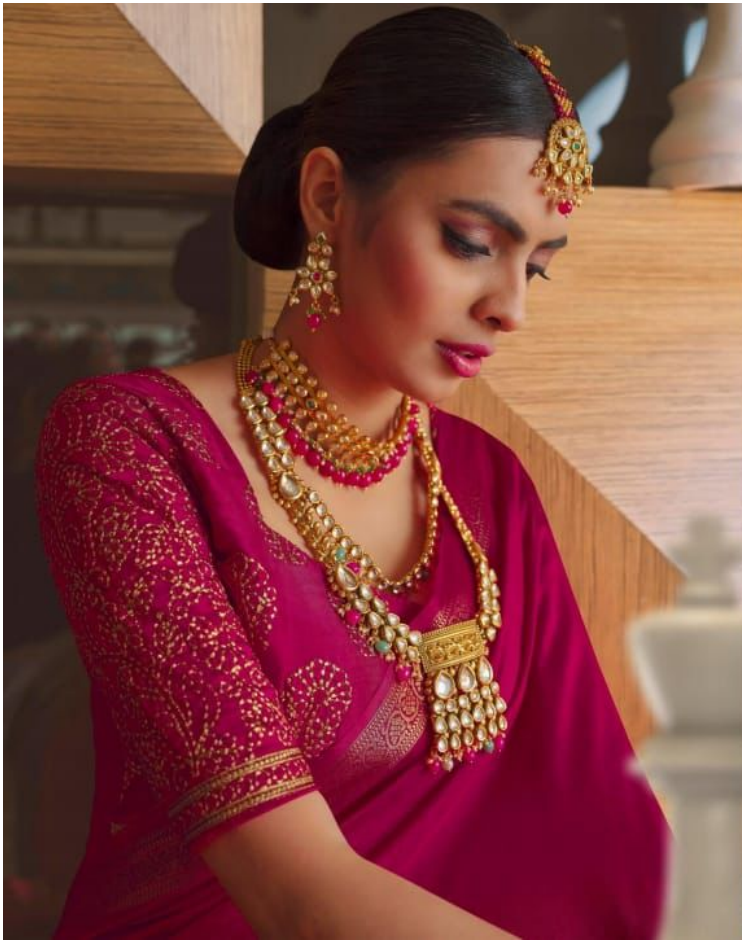


JOH RIVAAJ



47002







جوہ
JOH RIVAAJ



47007



JOH RIVAAJ





JOH RIVAAJ



F A B L O M N

Indian saree remains the traditional clothing of Indian women. Worn in central India, it is a long piece of the saree, silk or other fabric woven in different textures with different patterns. The saree has a long history and it is not just an Indian garment but a part of the Indian culture. The saree has been worn by women in different ways and the concept of wearing it has evolved and become an indicator of the status, age, complexion, region and origin of a woman.





jc
JOH RIVAAJ



47004



jc
JOH RIVA AJ

MALESTIC SHADE

India's most iconic the traditional clothing of Indian women. When in royal attire, it is a long piece of the cotton, silk or other fabric woven in different patterns and designs. The most beautiful thing about saree is its versatility and its ability to suit all ages. The graceful Indian women are able to wear it in many ways and for various occasions as well as in other and modern and traditional attire. The graceful Indian women are able to wear it in many ways and for various occasions as well as in other and modern and traditional attire.

Jantara

Jr.
JOH RIVAAJ



47001



47002



47003



47004



47005



47006



47007



47008



47009

JOH RIVAAJ

47009



jr
JOH RIVAAJ



47003