

CHANTELLE

VOL-10

TOP Butterfly Net with Embroidery **BOTTOM-INNER**



10358-A



ZAHA

Dull santoon **DUPATTA** Butterfly Net with Embroidery



10358-B



CHANTELLE ZA
Vol-10
TOP Butterfly net with Embroidery
BOTTOM-INNER Dull Santoon
DUPATTA Butterfly net with Embroidery

CHANTELLE

VOL-10

TOP Butterfly Net with Embroidery **BOTTOM-INNER**



10358-A



ZAHA

Dull santoon **DUPATTA** Butterfly Net with Embroidery



10358-B

CHANTELLE

VOL-10

TOP Butterfly Net with Embroidery **BOTTOM-INNER**



10358-A



ZAHA

Dull santoon **DUPATTA** Butterfly Net with Embroidery



10358-B



CHANTELLE ZAHA D.No.1
Vol-10
TOP Butterfly net with Embroidery
BOTTOM INNER Dull Satoon
DUPATTA Butterfly net with Embroidery

CARE INSTRUCTIONS
1. Do not wash
2. Do not iron
3. Do not dry clean



CHANTELLE ZAHA D.NC
Vol-10
TOP Butterfly net with Embroidery
BOTTOM INNER Dull Satoon
DUPATTA Butterfly net with Embroidery



CHANTELLE
Vol-10

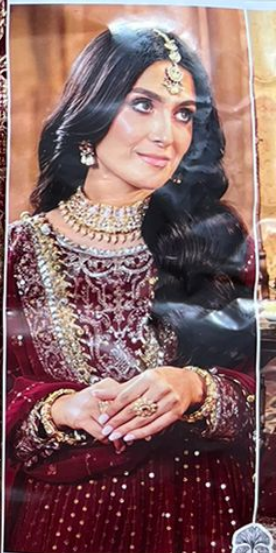
ZAHA

D.No.10358-B

TOP Butterfly net with Embroidery
BOTTOM-INNER Dull Santoon
DUPATTA Butterfly net with Embroidery

CARE INSTRUCTIONS

- Ⓟ Dry clean only
- ⚠ Do not use any bleach or stain removing chemical
- ☐ Iron the fabric at moderate temperature
- ⊗ Do not dry fabric in direct sunlight



CHANTELLE ZAH
Vol-10
TOP Butterfly net with Embroidery
BOTTOM-INNER Dull Santoon
DUPATTA Butterfly net with Embroidery



CHANTELLE
Vol-10

ZAHA

D.No.10358-A

TOP Butterfly net with Embroidery
BOTTOM-INNER Dull Santoon
DUPATTA Butterfly net with Embroidery

CARE INSTRUCTIONS

- Ⓟ Dry clean only
- ⚠ Do not use any bleach or stain removing chemical
- ☐ Iron the fabric at moderate temperature
- ⊗ Do not dry fabric in direct sunlight