

A woman with dark hair pulled back, wearing a light pink saree with intricate gold embroidery along the borders and on the sleeves. She is adorned with a matching gold necklace featuring green gemstones and large, ornate earrings. She is resting her chin on her hand, looking directly at the camera with a slight smile. The background is a softly lit indoor setting with a wooden wall and a window.

*jr*  
JOH RIVAAJ

Joshika

Exclusive designer collection...



JOH RIVAAJ

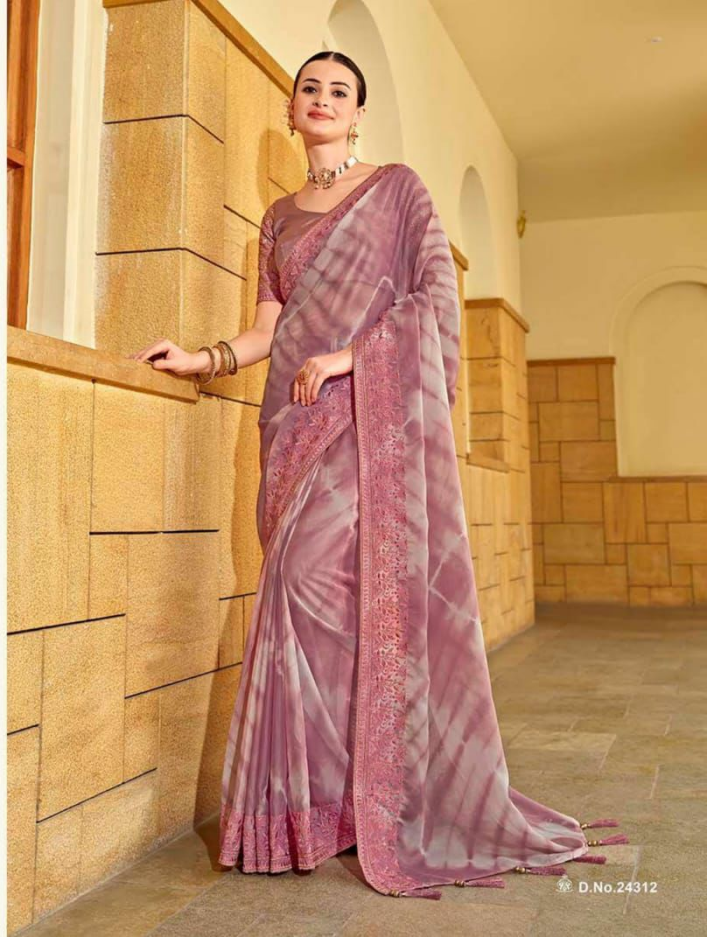
*Natural Magic*

A fashion of royalty and passion  
brings this beautiful ensemble...

JOH RIVAAJ



Saree, the epitome of grace, entwined with fabrics that whisper stories of beauty unfold.



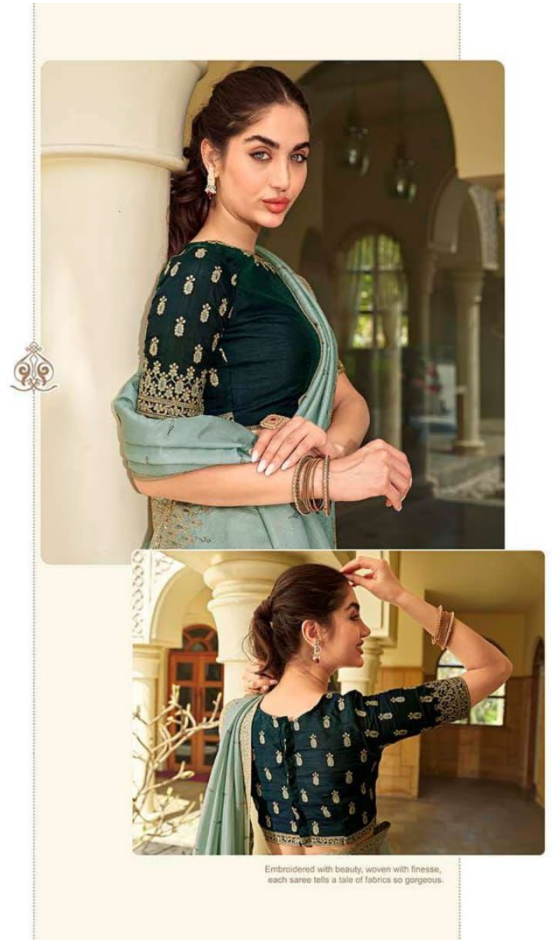
D.No.24312

A woman with dark hair pulled back, wearing a light pink saree with intricate gold embroidery along the borders and on the sleeves. She is adorned with a matching gold necklace featuring green gemstones and large, ornate earrings. She is resting her chin on her hand, looking directly at the camera with a slight smile. The background is a softly lit indoor setting with a wooden wall and a window.

*jr*  
JOH RIVAAJ

Joshika

Exclusive designer collection...



"Unleash your inner diva with our collection of designer sarees, guaranteed to turn heads and steal hearts."

JOH RIVAAJ



D.No.24313



*jr*  
**JOH RIVAAJ**  
*Celebrate the  
beauty*  
"Wrap yourself in timeless elegance  
with our exquisite saree collection, where  
tradition meets contemporary flair."

A woman with dark hair pulled back, wearing a light pink saree with intricate gold embroidery along the borders and on the sleeves. She is adorned with a matching gold necklace featuring green gemstones and large, ornate earrings. She is resting her chin on her hand, looking directly at the camera with a slight smile. The background is a softly lit indoor setting with a wooden wall and a window.

*jr*  
JOH RIVAAJ

Joshika

Exclusive designer collection...





D.No.24314

jc  
JOH RIVAAJ

Glamour Beauty

"Make a statement with our intricately embellished sarees, designed to add a touch of glamour to your wardrobe."





jc  
JOH RIVAAJ

Indian  
Craftsmanship

"From classic silk to contemporary prints,  
our saree catalogue offers a diverse  
range of options to suit every taste  
and preference."



"Elevate your style quotient with our stunning sarees, tailored to perfection for the modern woman."



JOH RIVAAJ

D.No.24317



The Fashion culture

Fashion is not necessary about labels  
It's not about brands It's about something  
else that comes from within.



jc  
JOH RIVAAJ

D.No.24315

  
**JOH RIVAAJ**

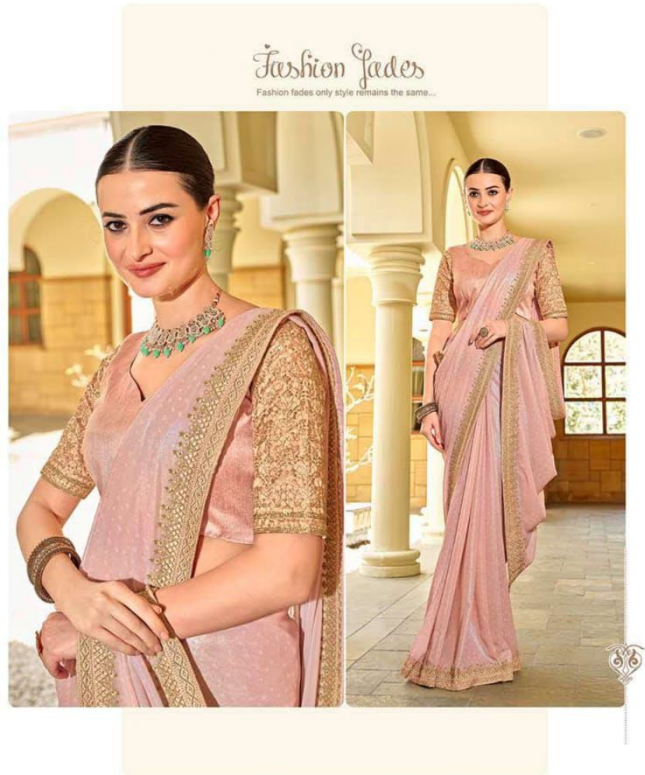
<b>JOSHIKA</b>		
<b>SR NO.</b>	<b>D NO.</b>	<b>RATE</b>
<b>1</b>	<b>joshika-24311</b>	<b>2595/-</b>
<b>2</b>	<b>joshika-24312</b>	<b>1895/-</b>
<b>3</b>	<b>joshika-24313</b>	<b>2195/-</b>
<b>4</b>	<b>joshika-24314</b>	<b>2995/-</b>
<b>5</b>	<b>joshika-24315</b>	<b>1595/-</b>
<b>6</b>	<b>joshika-24316</b>	<b>1895/-</b>
<b>7</b>	<b>joshika-24317</b>	<b>2695/-</b>
<b>8</b>	<b>joshika-24318</b>	<b>1895/-</b>
<b>9</b>	<b>joshika-24319</b>	<b>2295/-</b>



Embroidered with beads, woven with Gesses, each saree tells a tale of fabric's so gorgeous.



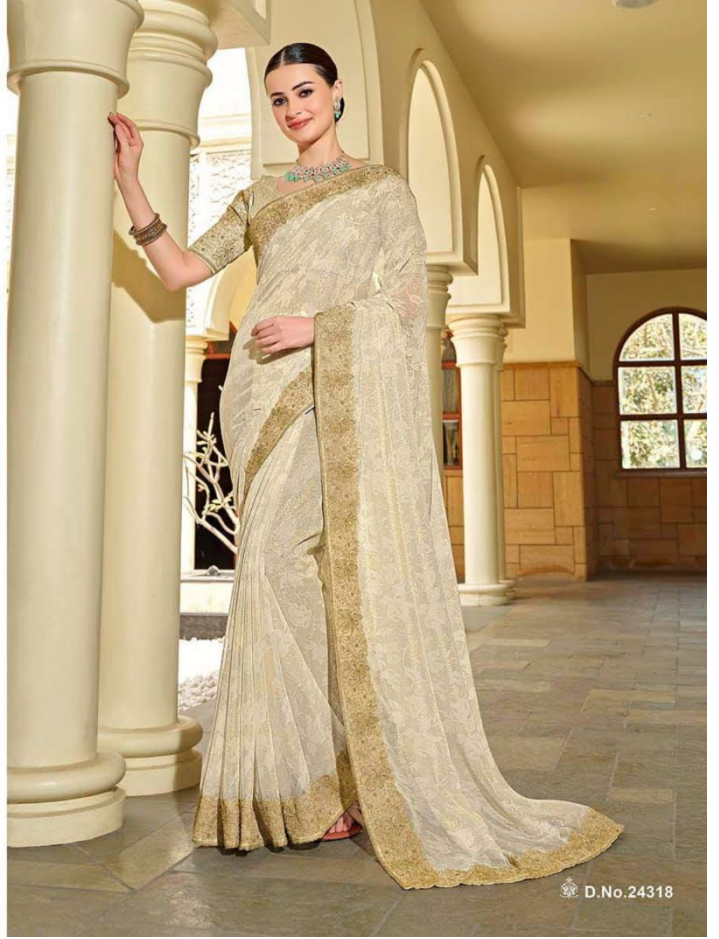
D.No.24319



JOH RIVAAJ



"Discover the beauty of Indian textiles with our curated saree catalogue, showcasing the richness of colors and textures."



D.No.24318





D.No.24311

D.No.24312

D.No.24313



D.No.24316

D.No.24317



D.No.24314

D.No.24315



D.No.24318

D.No.24319

