



NOT JUST
LUCK

BY CHANCE

But it's brilliance of color and
brand urban fabrics made it cool and noticeable.

/1001/





TREND

MINT MOMENT

This gorgeous pastel hue brings a refreshing coolness to the scalding summer. Soft, feminine and delicate-mint steals the show when paired with neutrals, whites, mustards or even other pastels for a flirty look.

/ 1002 /

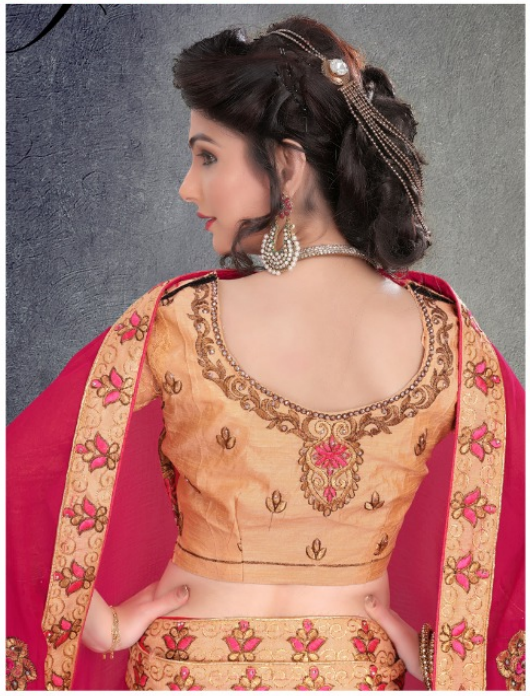


/1006/



A SUBLIME ENSEMBLE WITH MAJESTIC HUES THAT BRINGS OUT THE ELEGANCE OF AN IMPERIAL LIFESTYLE

/1005/





ELEGANT,BOLD,GUTSY & MULTI-COLORED,THERE IS NOTHING WHIMSICAL ABOUT THIS SEASON'S BLOSSOMS.



THE *Unmatched Enamor*

They say there's something special about her. Maybe it's her eyes. Maybe it's her smile. Maybe it's her walk Or maybe just maybe its her mesmerizing clothes. Which transform her into a modern day Empress like never before. She's unmatched in her elan!

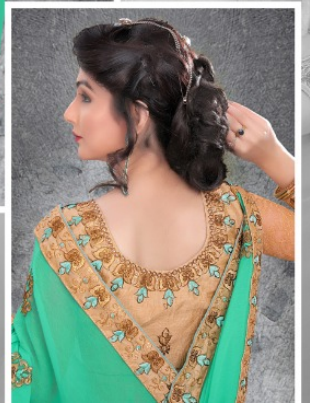


/1007/





/1009/



/1008/



be

THE MOST STUNNING

beauty

/ 1011 /



DREAM

"Dream" a word can give inspiration to us. our dream is to create ezcellent designs for beautiful lady.....



/1010/



1001



1002



1003



1004



1005



1006



1007



1008



1009



1010



1011



1012



/ 1012 /

RIGHT ONE
FASHION
INDIA'S FAVOURITE




FIRE
vol-3