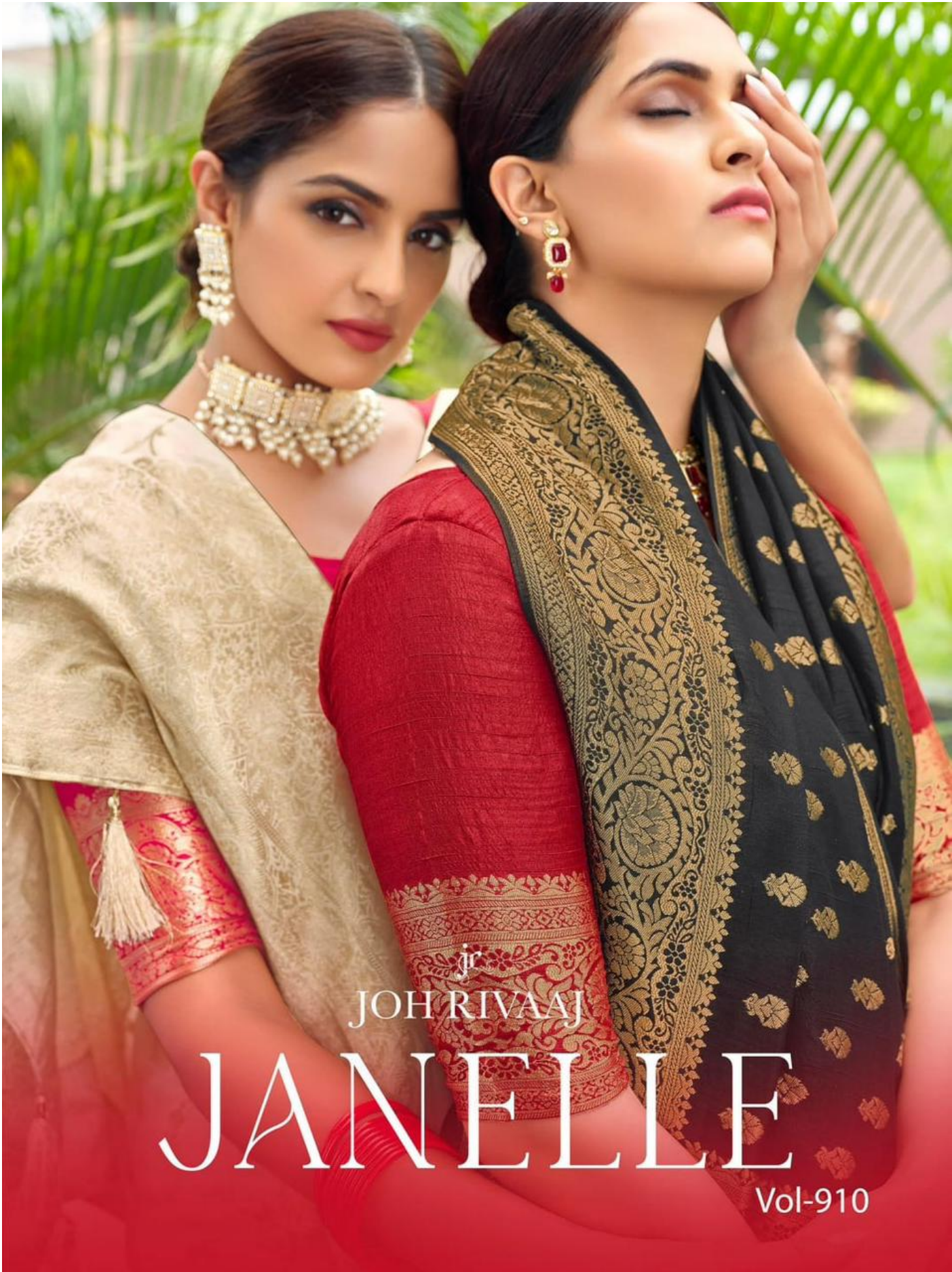


JOH RIVAAJ

JANELLE

Vol-910





JOH RIVAAJ

JANELLE

Vol-910



91009







JOH RIVAAJ

**Be
you**
Accepting the cultures
and traditions with
love and respect.



G
L
A
M
O
R
F
E
M
E
T
O
U
C
H

THE

QUEEN

OF
CULTURE

glimpse of heaven



JOH RIVAAJ

Q
E
E
N
O
F
C
U
L
T
U
E



**QUAINT &
HYPNOTIC**

Never-seen-before
that are rendered in
colours of life.



91007





91002

The beauty of a woman is not in a facial mode but the true beauty in a woman is reflected in her soul.....



JOH RIVAAJ



JOH RIVAAJ

Beauty awakens the soul to act.
I don't think of all the misery but of the beauty that still remains.
Elegance is beauty.
Beauty is in the heart of the beholder.

91006

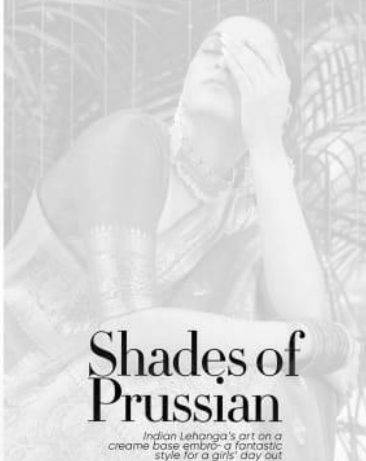
The advertisement features the brand name 'JOH RIVAAJ' at the top. Below it are two smaller images of the woman in the saree: one in profile on the left and one in a close-up pose on the right. A quote is placed between these images, and a small logo with the number '91006' is at the bottom right.


JOH RIVAAJ

JANELLE		
SR NO.	<i>D NO.</i>	RATE
1	<i>janelle-91001</i>	1995/-
2	<i>janelle-91002</i>	1995/-
3	<i>janelle-91003</i>	1995/-
4	<i>janelle-91004</i>	1995/-
5	<i>janelle-91005</i>	1995/-
6	<i>janelle-91006</i>	1995/-
7	<i>janelle-91007</i>	1995/-
8	<i>janelle-91008</i>	1995/-
9	<i>janelle-91009</i>	1995/-



jc
JOH RIVAAJ



Shades of Prussian
Indian Lehanga's art on a cream base embolden a fantastic style for a girls' day out



Euphony
of deep
hues



91005

Beauty awakens the soul to act.
I don't think of all the misery but of the beauty that still remains.
Elegance is beauty.
Beauty is in the heart of the beholder.

JOH RIVAAJ





91001



91002



91003



91007



91008



91004



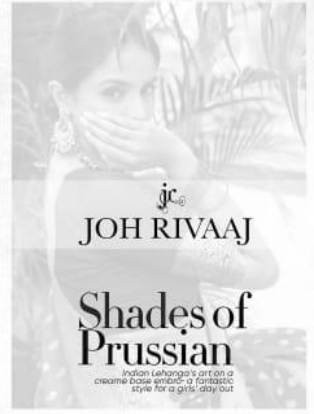
91005



91006



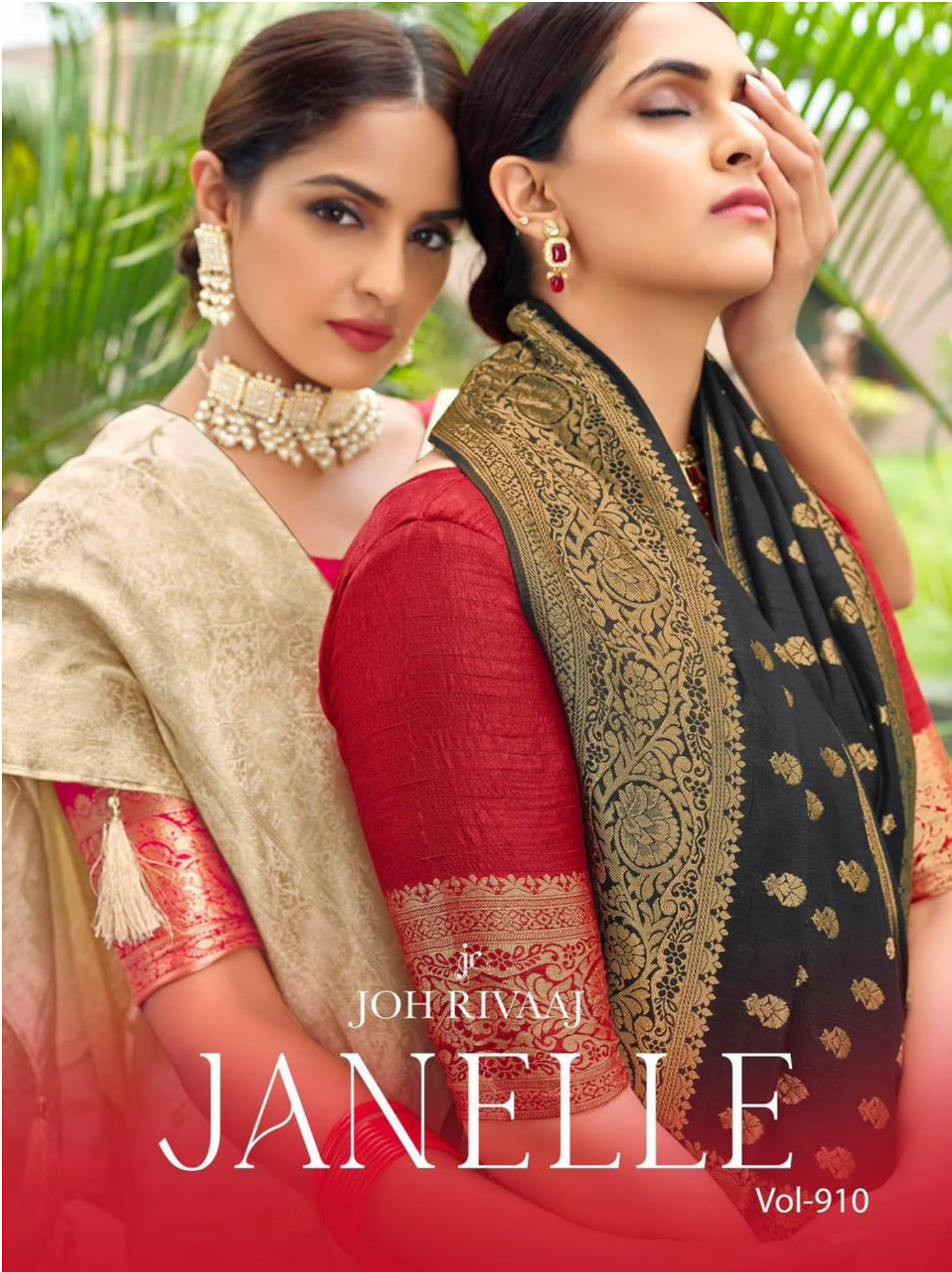
91009



JOH RIVAAJ

Shades of Prussian

Indian Lehanga's art on a cream base embroidered with royal style for a girl's day out



JOH RIVAAJ

JANELLE

Vol-910

In this sandstone ensemble inspired by Indian paisley

91004



**EARTHY
COMPOSITIONS
LOOK LIKE
ADREAM**

The beauty of a woman is not in a facial mode
but the true beauty in a woman is
reflected in her soul.....