



*The fervent allure of
rich brown shades.*



Fabric and elegance fuse, leaving a lasting impression in your style.



FASHIONS MADE, STYLE IS ETERNAL
23519

FABRIC: TWO TONE GEORGETTE SILK

Shining Blue



A perfect wardrobe choice, where grace meets fashion, a feminist statement.



Your Style's Refined Melody.



FASHIONS MADE, STYLE IS ETERNAL
23516

FABRIC: CREPE SATIN SILK

A shade of Yellow, and the glow of
Banarasi silk Everywhere



ELEGANCE
REINVENTED
IN THIS
VIBRANT
YELLOW
SAREE
FUSING
VIBRANCY
AND RENNE-
MENT



TRADITIONS PADE, STYLE IS ETERNAL
23509

FABRIC: BANARASI CRUSH SILK

When Style Meets Impression:
A Beautiful Fusion.

Step into a world where style and impression fuse beauty harmoniously.



FASHIONS FARE, STYLE IS ETERNAL
23520

FABRIC: PURE CREPE GEORGETTE

WEAVING A
TALE OF
ARTISTRY, A
TOUCH OF
OPULENCE TO
TIMELESS
ELEGANCE.



It's her style's
turn to shine now

FASHIONS FADE, STYLE IS ETERNAL
23522

FABRIC: CREPE SATIN SILK

DESIGN NO	SAREE FABRIC	BLOUSE FABRIC	work	Belt	CUSTZ.(SEMISTITCH/UN-STITCH)	BLOUSE SIZE
23508	Crepe satin silk	Satin Silk	Texture with Cord & Sequence Embroidered and Stone work	Available	UN-stitched Blouse	0.80 mtr
23509	Banarasi Crush silk	Net	Cord, Thread & Foil Embroidered with Stone work	NA	UN-stitched Blouse	0.80 mtr
23510	Crepe satin silk	Banglari Silk	Applique work with Cord, Sequence Embroidered & Stone Work	NA	UN-stitched Blouse	0.80 mtr
23512	Crepe Silk Georgette	Net	Texture with Cord, Sequence Embroidered & Stone work	Available	stitched Blouse	up to 38 Inch with margin of 42 Inch
23513	Crepe satin silk	Satin Crepe Silk	Cord & Sequence Embroidered with Stone work	Available	stitched Blouse	0.80 mtr
23514	Crepe satin silk	Organza Silk	Cord & Sequence Embroidered with Applique & Stone work	NA	UN-stitched Blouse	0.80 mtr
23515	Crepe satin silk	Organza Silk	Cord & Sequence Embroidered with Stone work	NA	UN-stitched Blouse	0.80 mtr
23516	Crepe satin silk	Malai Satin	Cord & Sequence Embroidered with Stone work	NA	UN-stitched Blouse	0.80 mtr
23519	Two Tone Georgette Silk	Malai Satin	Sequence Embroidered with Stone work	NA	UN-stitched Blouse	0.80 mtr
23520	Pure Crepe Georgette	Banglari Silk	Cord & Sequence Embroidered with Stone work	NA	UN-stitched Blouse	0.80 mtr
23521	Net Organza Georgette	Satin Crepe Silk	Cord & Sequence Embroidered	NA	UN-stitched Blouse	0.80 mtr
23522	Crepe satin silk	Satin Crepe Silk	Cord & Sequence Embroidered with Stone work	NA	UN-stitched Blouse	0.80 mtr





23508



23509



23510



23512



MOHMANTHAN™

Majestica



23513



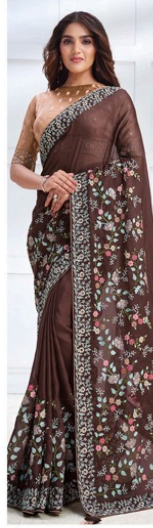
23514



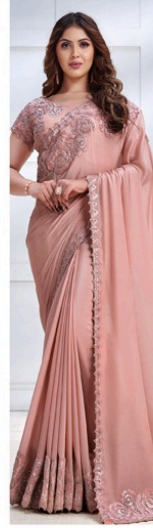
23515



23516



23519



23520



23521



23522



Discovering majestic
charm in the red

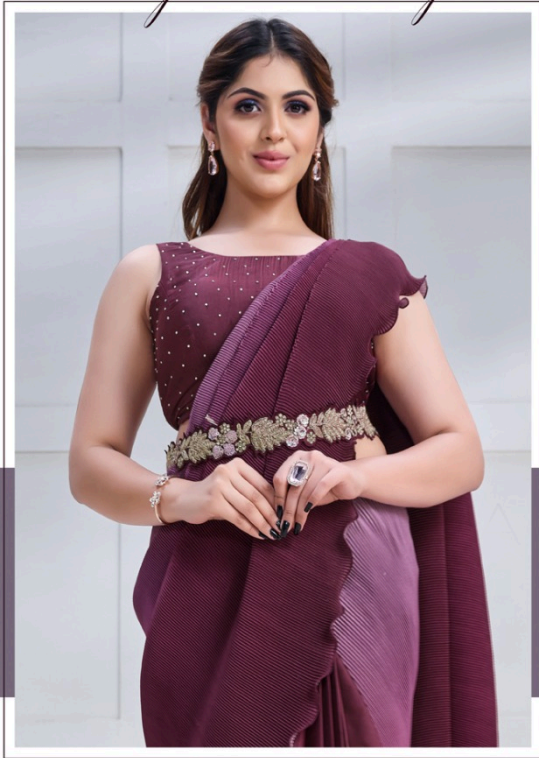
Join the timeless craftsmanship and style evolution with the red.



FASHIONS FADE, STYLE IS ETERNAL
23512

FABRIC: CREPE SILK GEORGETTE

GET WRAPPED IN
Majestic Beauty



THIS
WINE-COL-
ORED SAREE
WITH A HINT
OF LIGHT
PURPLE
EXUDES
GRACE AND
CHARISMA.

FASHIONS FADE, STYLE IS ETERNAL
23508

FABRIC: CREPE SATIN SILK

A Symphony in
Light of Palettes



NARRATE
YOUR STYLE
WITH CAPTI-
VATING
FASHION.

FASHIONS FADE, STYLE IS ETERNAL
23513

FABRIC: CREPE SATIN SILK







Elegante

Beauty



ENTWINED
STYLE CELE-
BRATES
WOMEN'S
GRACE IN
YOUR
EVOLVING
RULES.

FASHION IS ETERNAL
23513

FABRIC: CREPE SATIN SILK

The art of capturing the soul
in radiant crepe satin silk

With fervent vibrancy, this saree leads us on a captivating voyage.



FASHIONS FADE, STYLE IS ETERNAL
23510

FABRIC: CREPE SATIN SILK