



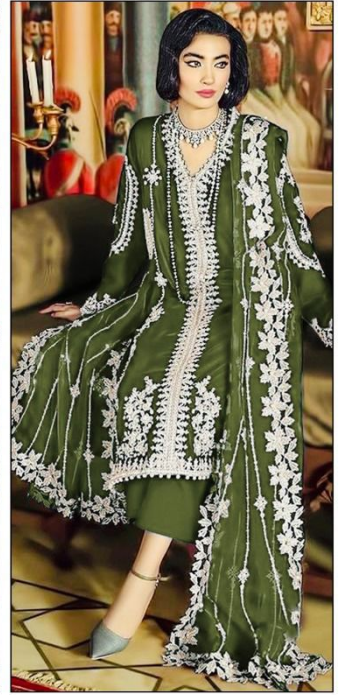
JT D.NO.139 A



JT D.NO.139 B



JT D.NO.139 C



JT D.NO.139 D



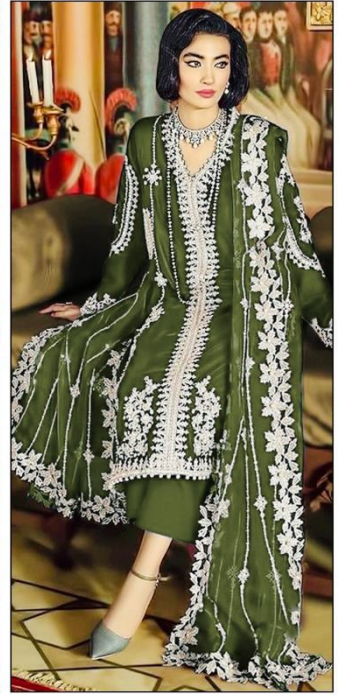
JT D.NO.139 A



JT D.NO.139 B



JT D.NO.139 C



JT D.NO.139 D



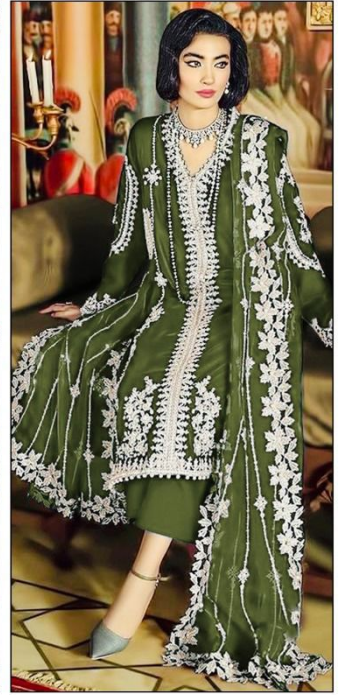
JT D.NO.139 A



JT D.NO.139 B

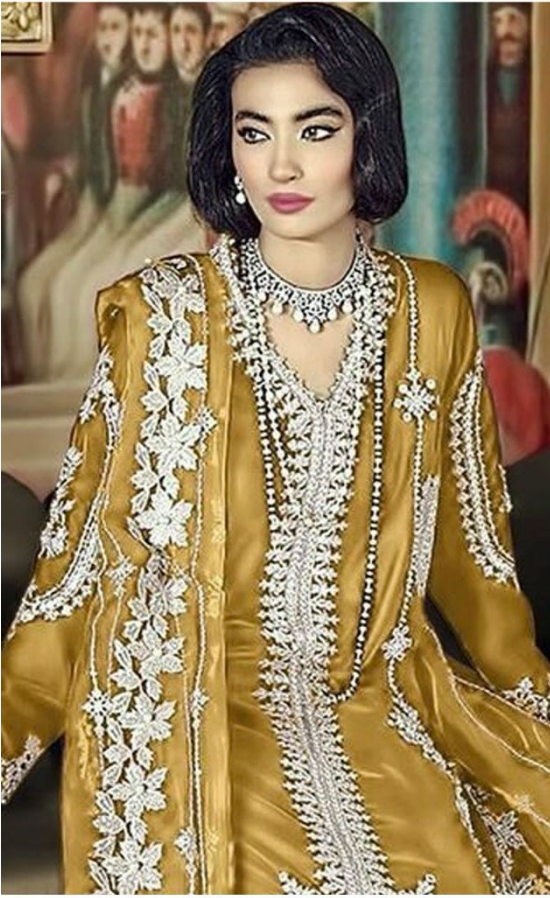


JT D.NO.139 C



JT D.NO.139 D

JOHRA TEX



JT D.NO.139 B

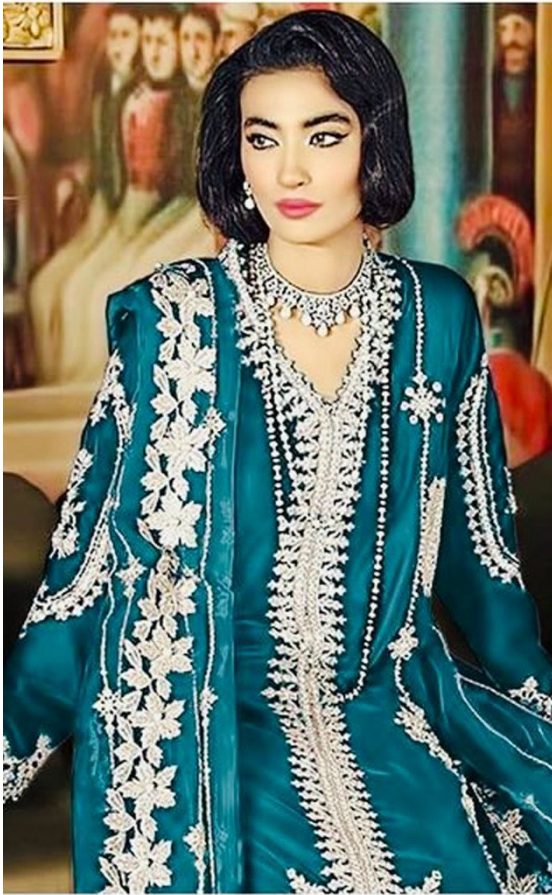
**TOP -ORGENZA WITH HEAVY EMBROIDERY
(WITE PERALS MOTIWORK)**

BOTTOM - DULL SANTON

DUPATTA - ORGENZA WITH HEAVY EMBROIDERY



JOHRA TEX



JT D.NO.139 A

**TOP -ORGENZA WITH HEAVY EMBROIDERY
(WITE PERALS MOTIWORK)**

BOTTOM - DULL SANTON

DUPATTA - ORGENZA WITH HEAVY EMBROIDERY



JOHRA TEX



JT D.NO.139 D

**TOP -ORGENZA WITH HEAVY EMBROIDERY
(WITE PERALS MOTIWORK)**

BOTTOM - DULL SANTON

DUPATTA - ORGENZA WITH HEAVY EMBROIDERY