

Abhkala®
GIRLY
VOL-28

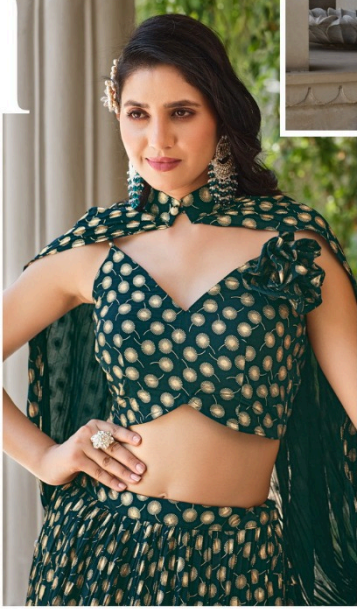






CODE | 2322

शुभकला bhkala



Love
your Style

CODE | 2324







CODE | 2321



CODE | 2322



CODE | 2323



CODE | 2324



CODE | 2325



CODE | 2326



 bhkala

True
Elegance is
Simplicity

 bhkala



Relax,
We get your
fashion!

CODE | 2321





 bhkala

THIS BOOK, CATALOGUE, LOGO / ARE PROTECTED UNDER COPYRIGHT ACT.
AN ILEGAL/UNAUTHORIZED REPRINT/PUBLISHING/REPRODUCTION/DISTRIBUTION AND MODIFICATION OF ANY IMAGES, PHOTOGRAPHS AND
PRODUCT, TOTALLY OR IN PART, FOR ANY PURPOSE, REASON OR CAUSE IS STRICTLY PROHIBITED AND PUNISHABLE UNDER LAW.

Abhkala®
GIRLY
VOL-28



शुभकला bhkala



CODE | 2321





CODE | 2323

bhkala

CODE | 2323



Abhkala®
GIRLY
VOL-28



Design NO. (SKU)	Color	Lehenga – Choli – Dupatta Fabric	Lehenga Work	Choli Work	Dupatta Work	SIZE (XL-42) SEMI - STITCHED	SIZE (3XL-48) SEMI - STITCHED	Dupatta Length (Ready to Wear)	Weight
2321	Light Purple	Georgette	Metalic Foil Work with Crush Pattern	Metalic Foil Work	Metalic Foil Work	Choli Chest: 42 MTR Choli Length: 14.5 MTR Lehenga Waist: 42 INCH Lehenga Length: 42 INCH	Choli Chest: 48 MTR Choli Length: 16.5 MTR Lehenga Waist: 48 INCH Lehenga Length: 42 INCH	Fancy Dupatto (Attached with Choli) Please Refer Image for Dupatta Pattern	1.5 KG
2322	Blye Grey	Georgette	Metalic Foil Work with Crush Pattern	Metalic Foil Work	Metalic Foil Work	Choli Chest: 42 MTR Choli Length: 14.5 MTR Lehenga Waist: 42 INCH Lehenga Length: 42 INCH	Choli Chest: 48 MTR Choli Length: 16.5 MTR Lehenga Waist: 48 INCH Lehenga Length: 42 INCH	Fancy Neck Style Dupatto Please Refer Image for Dupatta Pattern	1.5 KG
2323	Purple	Georgette	Metalic Foil Work with Crush Pattern	Metalic Foil Work	Metalic Foil Work	Choli Chest: 42 MTR Choli Length: 14.5 MTR Lehenga Waist: 42 INCH Lehenga Length: 42 INCH	Choli Chest: 48 MTR Choli Length: 16.5 MTR Lehenga Waist: 48 INCH Lehenga Length: 42 INCH	Fancy Dupatto (Attached with Choli) Please Refer Image for Dupatta Pattern	1.5 KG
2324	Green	Georgette	Metalic Foil Work with Crush Pattern	Metalic Foil Work	Metalic Foil Work (KOTI STYLE JACKET)	Choli Chest: 42 MTR Choli Length: 14.5 MTR Lehenga Waist: 42 INCH Lehenga Length: 42 INCH	Choli Chest: 48 MTR Choli Length: 16.5 MTR Lehenga Waist: 48 INCH Lehenga Length: 42 INCH	Koti Style Jacket Please Refer Image for Dupatta Pattern	1.5 KG
2325	Brown	Georgette	Metalic Foil Work with Crush Pattern	Metalic Foil Work	Metalic Foil Work	Choli Chest: 42 MTR Choli Length: 14.5 MTR Lehenga Waist: 42 INCH Lehenga Length: 42 INCH	Choli Chest: 48 MTR Choli Length: 16.5 MTR Lehenga Waist: 48 INCH Lehenga Length: 42 INCH	Fancy Dupatto (Attached with Choli) Please Refer Image for Dupatta Pattern	1.5 KG
2326	Black	Georgette	Metalic Foil Work with Crush Pattern	Metalic Foil Work	Metalic Foil Work	Choli Chest: 42 MTR Choli Length: 14.5 MTR Lehenga Waist: 42 INCH Lehenga Length: 42 INCH	Choli Chest: 48 MTR Choli Length: 16.5 MTR Lehenga Waist: 48 INCH Lehenga Length: 42 INCH	Fancy Dupatto (Attached with Choli) Please Refer Image for Dupatta Pattern	1.5 KG

****LEHENGA DOES NOT COMES WITH CANCAN****

****NO CANCAN ATTACHED INSIDE****

THIS BOOK / CATALOGUE / LOGO / ARE PROTECTED UNDER COPYRIGHT ACT.

AN INLEGAL/UNAUTHORIZED REPRINT, PUBLISHING, REPRODUCTION, DISTRIBUTION AND MODIFICATION OF ANY IMAGES, PHOTOGRAPHS AND PRODUTCS, TOTALLY OR IN PART, FOR ANY PURPOSE, REASON OR CAUSE IS STRICTLY PROHIBITED AND PUNISHABLE UNDER LAW.

bhkala



For
Elegance
And class





CODE | 2326



