



OR-23 A



OR-23 B



OR-23 C



HOOR TEX







HOOR TEX



OR-23-C

TOP- DULL ORGANZA WITH HEAVY EMBROIDERY

BOTTOM/INNER- SANTOON

DUPATTA/NET- ORGANZA WITH WORK WITH 4 SIDE CUT WORK LACE

☉ DRY CLEAN ONLY.
⊗ DO NOT USE ANY BLEACH OR STAIN REMOVING CHEMICAL.
☎ IRON THE FABRIC AT MODERATE TEMPERATURE.





OR-23 A



OR-23 B



OR-23 C



HOOR TEX



OR-23 A



OR-23 B



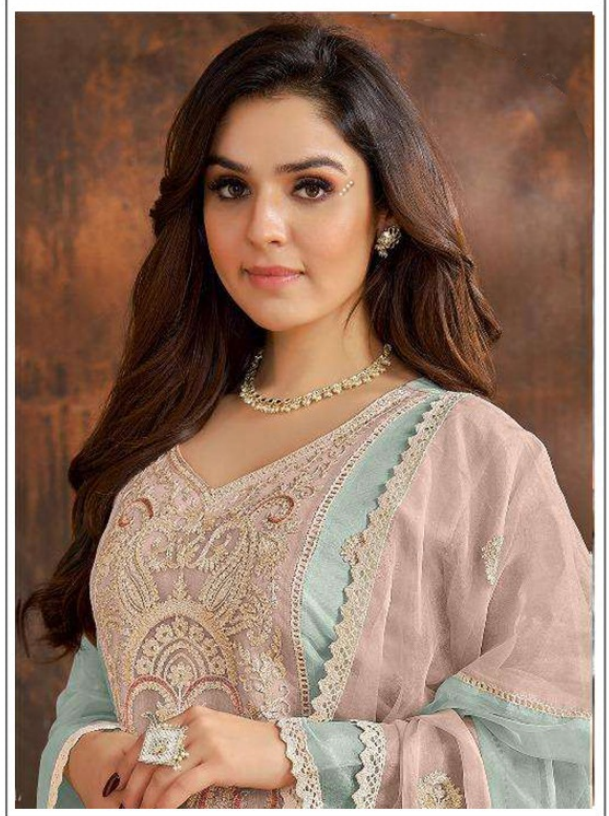
OR-23 C



HOOR TEX



HOOR TEX



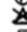
OR-23-B


TOP- DULL ORGANZA WITH HEAVY EMBROIDERY

BOTTOM/INNER- SANTOON

DUPATTA/NET- ORGANZA WITH WORK WITH 4 SIDE CUT WORK LACE

 DRY CLEAN ONLY.

 DO NOT USE ANY BLEACH OR STAIN REMOVING CHEMICAL.

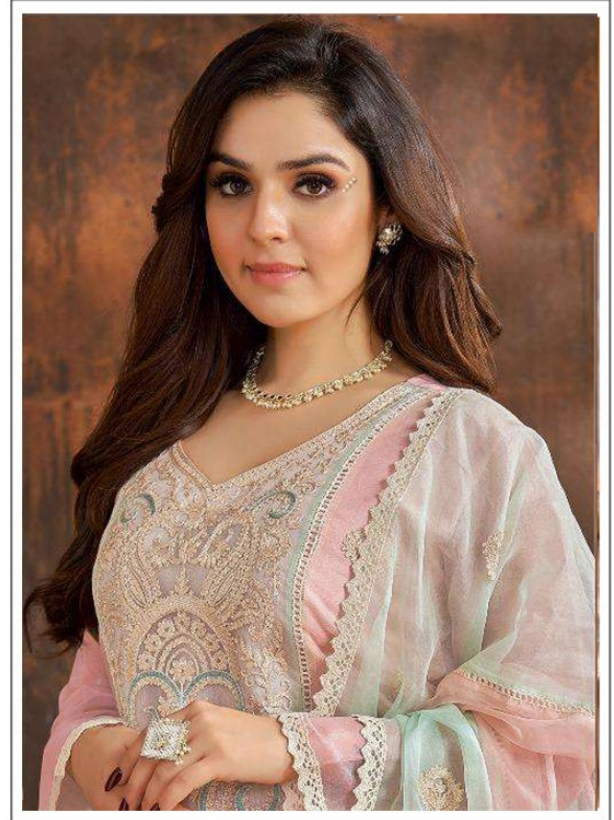
 IRON THE FABRIC AT MODERATE TEMPERATURE.







HOOR TEX



OR-23-A

TOP- DULL ORGANZA WITH HEAVY EMBROIDERY

BOTTOM/INNER- SANTOON

DUPATTA/NET- ORGANZA WITH WORK WITH 4 SIDE CUT WORK LACE

-  DRY CLEAN ONLY.
-  DO NOT USE ANY BLEACH OR STAIN REMOVING CHEMICAL.
-  IRON THE FABRIC AT MODERATE TEMPERATURE.

